

# **Natural Resources Management Plan For the Savannah River Site, May 2005: Update**

## **USDA Forest Service-Savannah River**

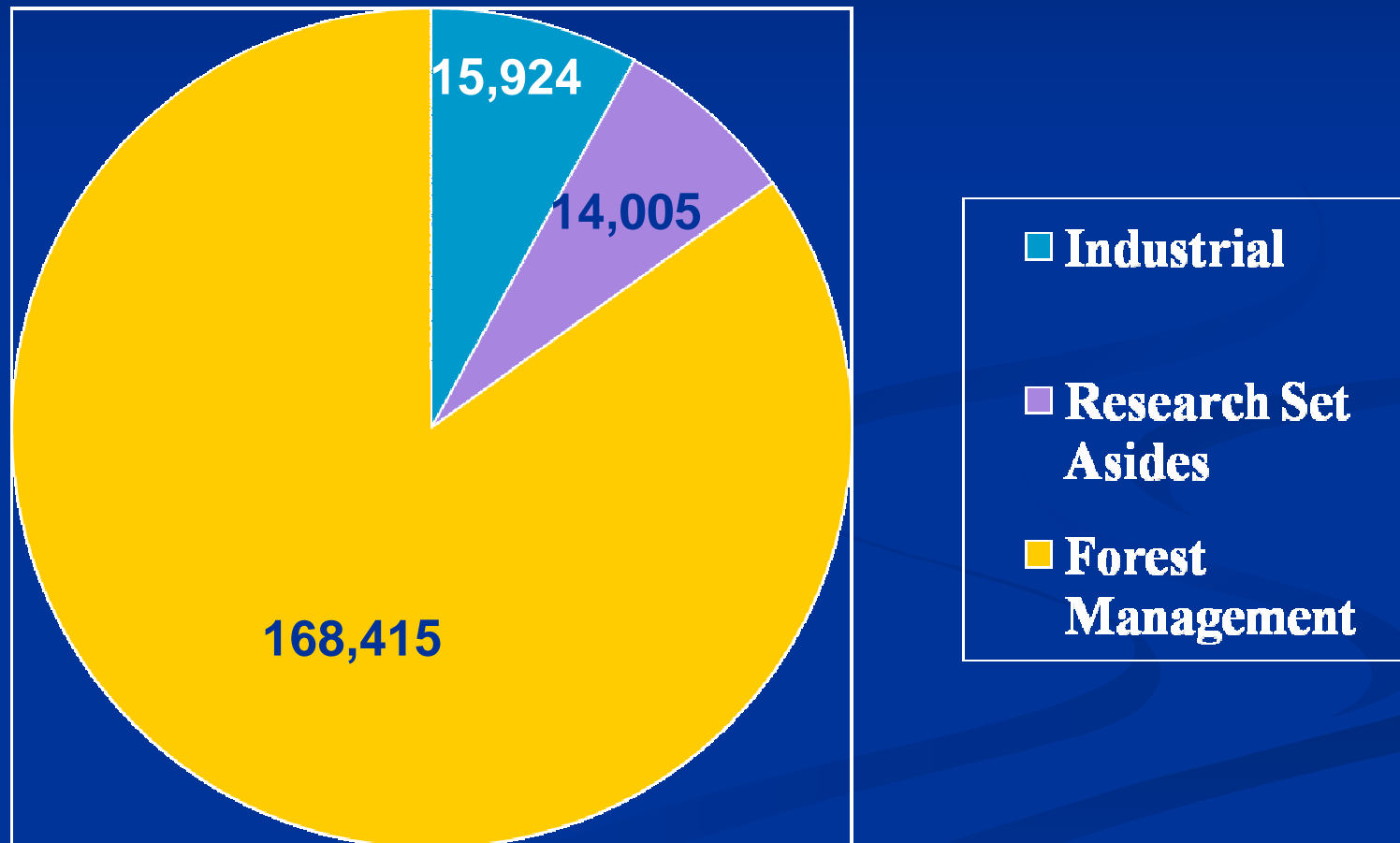
January 26, 2010

# Guidance

## Natural Resources Management Plan For the Savannah River Site May 2005 (NRMP)

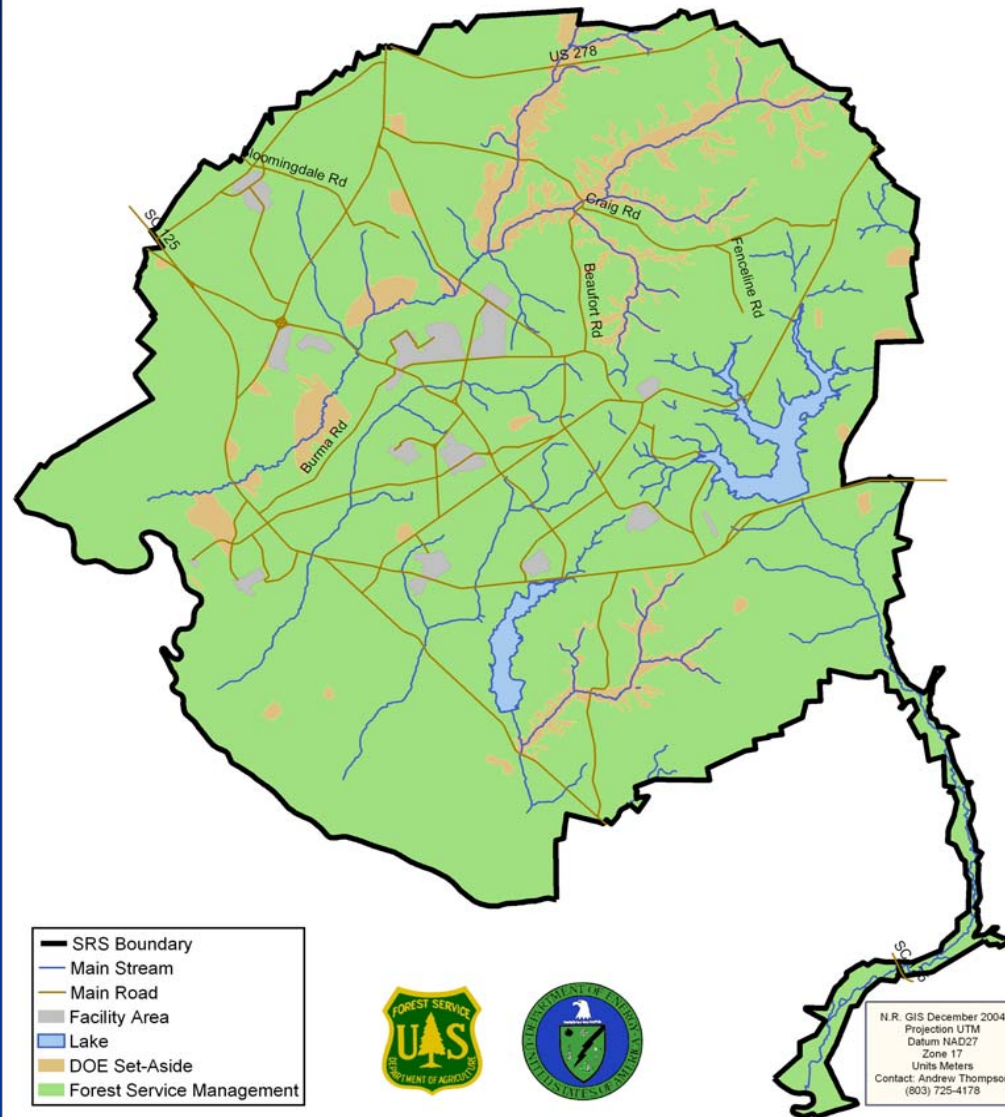
January 26, 2010

# Land Uses at SRS



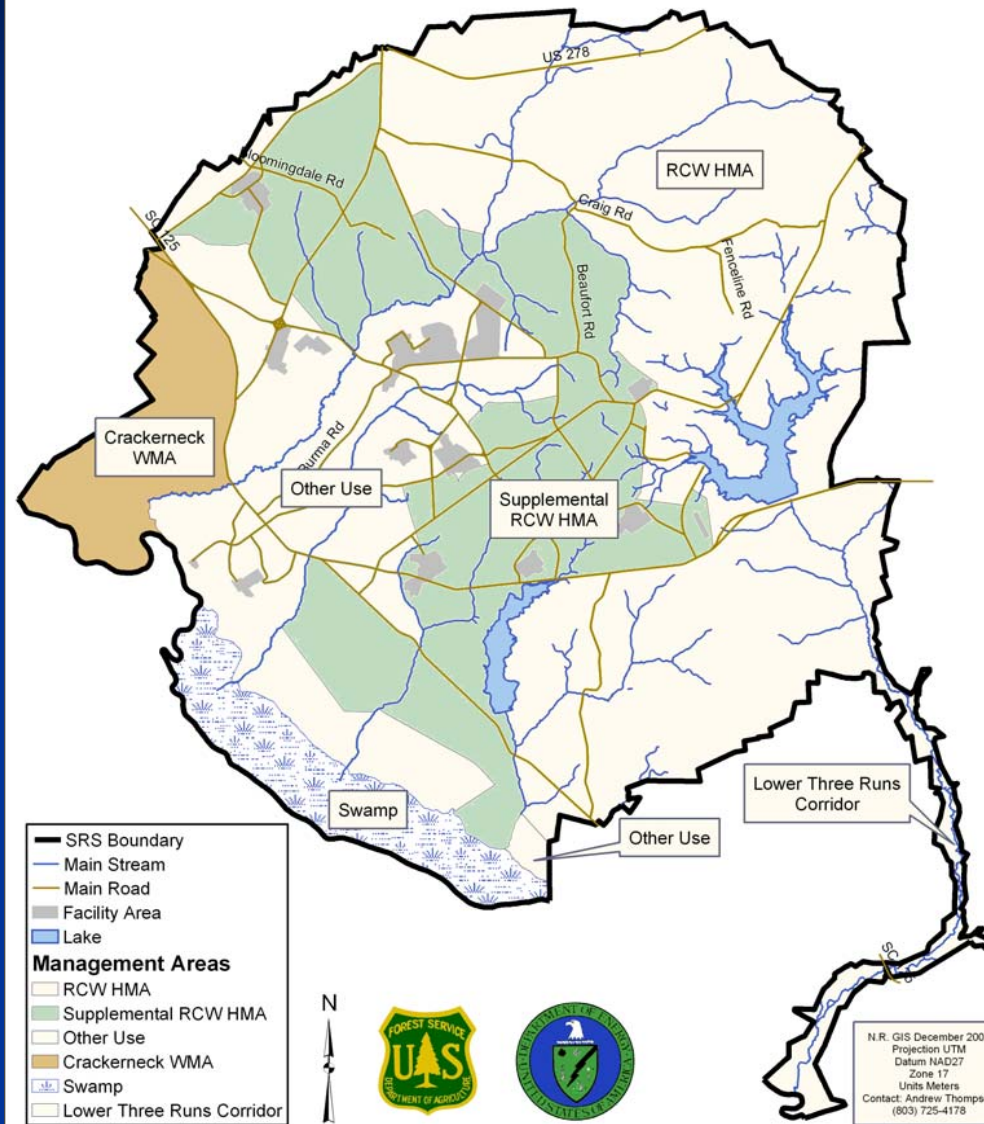
January 26, 2010

## SRS Land Use



January 26, 2010

# SRS Management Areas



January 26, 2010

# **Management for all Threatened, Endangered, Sensitive and Rare plants found at SRS**

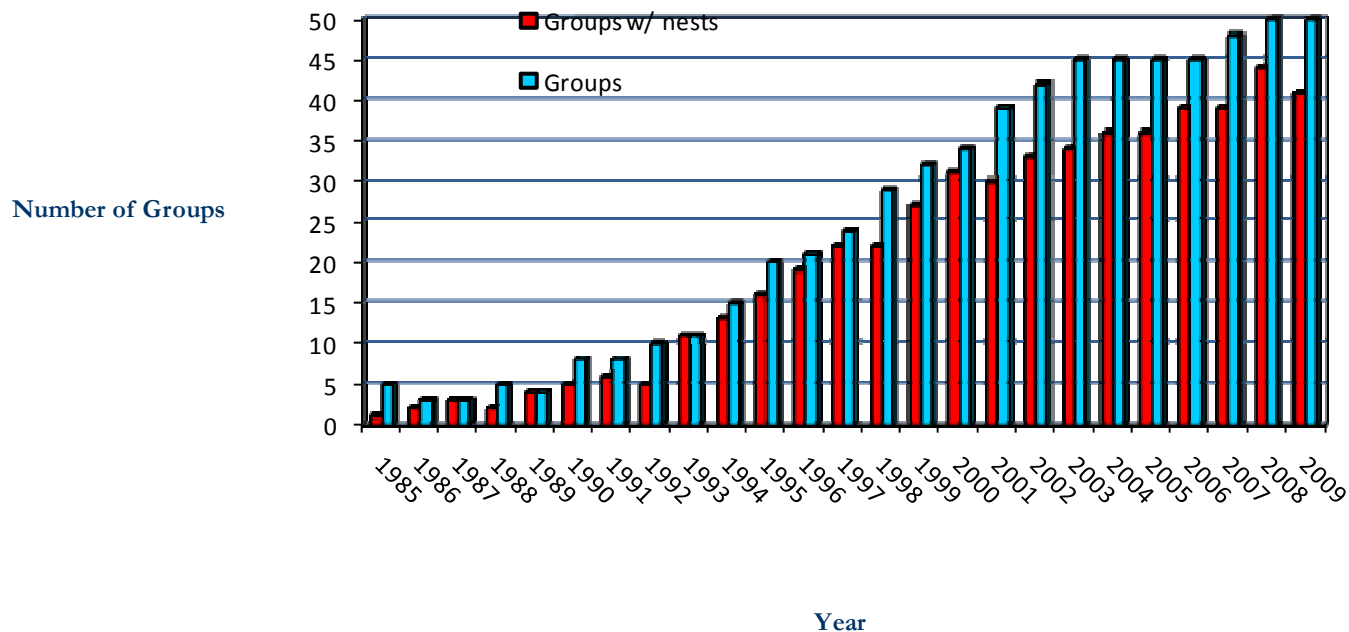


**Smooth purple coneflower**



**Red-cockcaded woodpecker**

# Maintained and improved habitat to meet recovery population objectives for RCW



January 26, 2010



# Slash Pine



# Longleaf Pine



January 26, 2010



## Reduce hazardous forest fuel accumulations: Prescribed Fire

- **27,263 acres in FY09**
- **Also, 109 acres for site preparation,**
- **And, 96 acres for research projects**



# Before Prescribed Fire

January 26, 2010





# After Prescribed Fire

January 26, 2010



**Natural Resources  
Management Plan for SRS:  
No changes anticipated at this time.**

January 26, 2010