

***RANGE CONTROL - DIRECTORATE OF PLANS, TRAINING, MOBILITY, and SECURITY (DPTMS)***

***Fort Gordon, Georgia***

---

***Citizens Advisory Board  
Update  
U.S. Army Training at SRS***

---

***Don McLean – Training Facility Coordinator***

# *Proposal*

*The Army proposes to utilize DOE–SRS for non-live fire maneuver, combat support, and combat service support training.*

*DOE and its contractors will maintain their current missions, operations, and activities at the SRS. Training events will be pre-coordinated to minimize conflicts with SRS missions.*

*This proposal will support the national defense and national security needs of the nation.*

*This proposal is Influenced by and supports the goals and objectives of major ongoing Department of Defense (DOD) and Department of the Army (DA) initiatives and programs.*

## *Why the Need for SRS Land?*

*In 2006 the Army was short approx. 2 million acres of maneuver training land in the Continental United States (CONUS).*

*The land shortfall has been exacerbated by.....*

- The 2005 Base Realignment and Closure (BRAC)*
- The Army's Global Defense Posture Realignment (GDPR)*
- Environmental Restrictions*
- Other initiatives*

*Consequently, by 2011 the Army will have a shortfall of approx. 5 million acres of maneuver training land in the Continental United States needed to train Army forces.*

*The Army has to overcome this training land shortfall by; focused management of existing lands, maximize the use of all maneuver training lands, and use of other federal lands.*

# “Supreme Republic of Savannistan (SRS)”

Deployment to SRS would be treated like a foreign nation deployment.

Other than water, trash, and port-a-let support, units must provide all classes of supply for the duration of their deployment. Water, trash disposal, and port-a-lets will be provided by SRNS.



## *Where Do We Stand?*

Memorandum of Understanding – September 2007

Interagency Agreement – September 2009

Draft Environmental Assessment issued Summer 2010

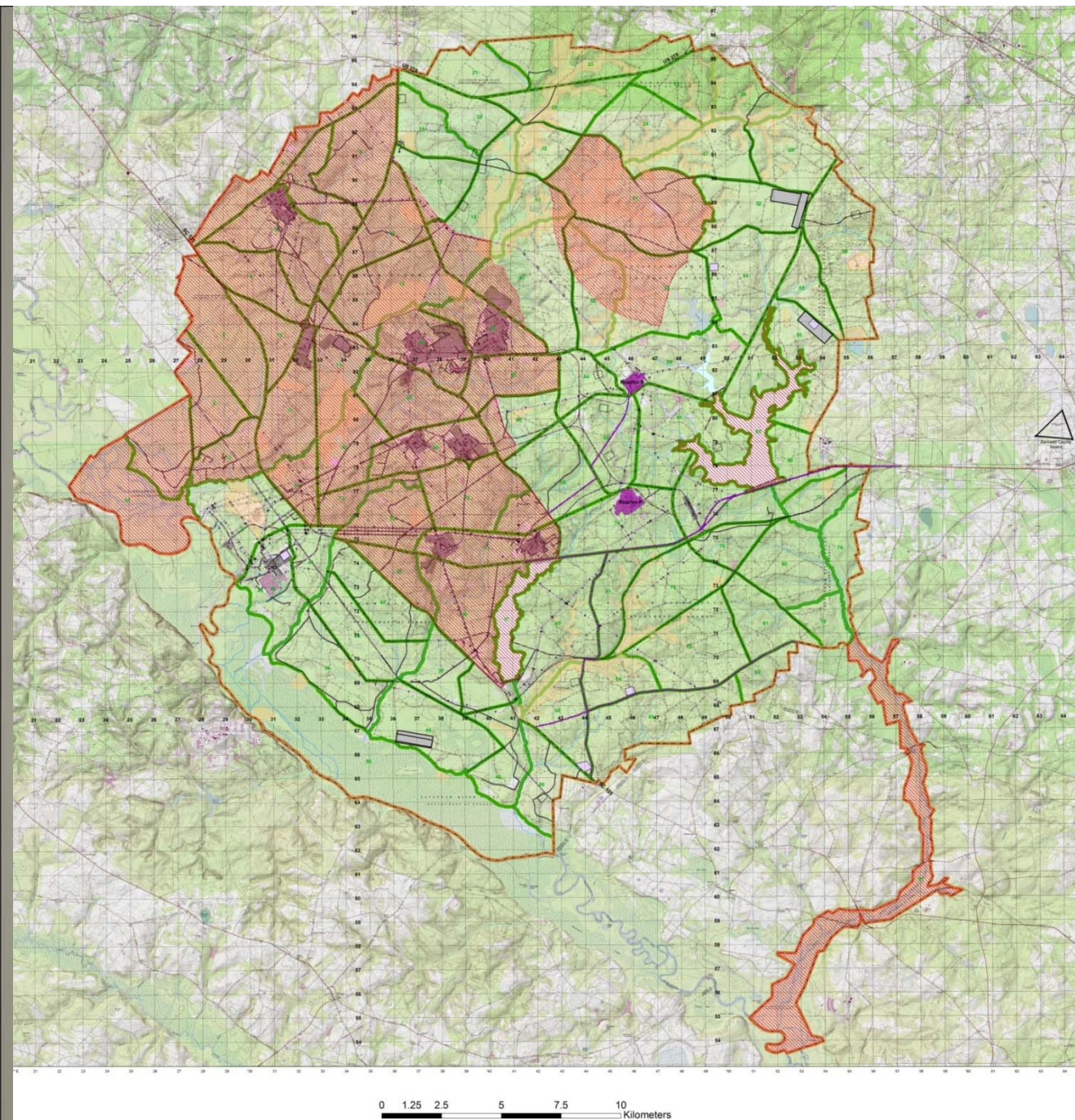
Draft Joint Standard Operating Procedure - ongoing. Currently developing possible costs that may be incurred by the Army.

Biological Evaluation required by the Endangered Species Act  
– development ongoing

USACHPPM Noise Modeling of Barnwell Airport and  
SRS complete

URS Corp. Photographic Monitoring of SRS





- Restricted Areas.
- Proposed Land Training Locations.
- DOE-SR and Army Interaction
- Waterborne Operations.
- Wetlands, Lakes, Streams.
- FOB Locations.
- FARP Locations.
- Convoy / IED Training.
- Aircraft STOL.
- Air Corridors.
- Drop Zones (DZs).
- Landing Zones (HLZs).
- Close Quarters Battle (CQB).
- Plant Vogtle.
- Three Rivers Land Fill



# *Combat Maneuver Training`*

- *Light Forces, SOCOM*
- *Army Aviation, Rotary Wing and Fixed Wing Aircraft*
- *Close Quarters Battle (CQB)*





# Combat Service Support Training

Transportation



Maintenance



Medical and Field Hospitals



Logistical Support Elements







AN-TRC 170

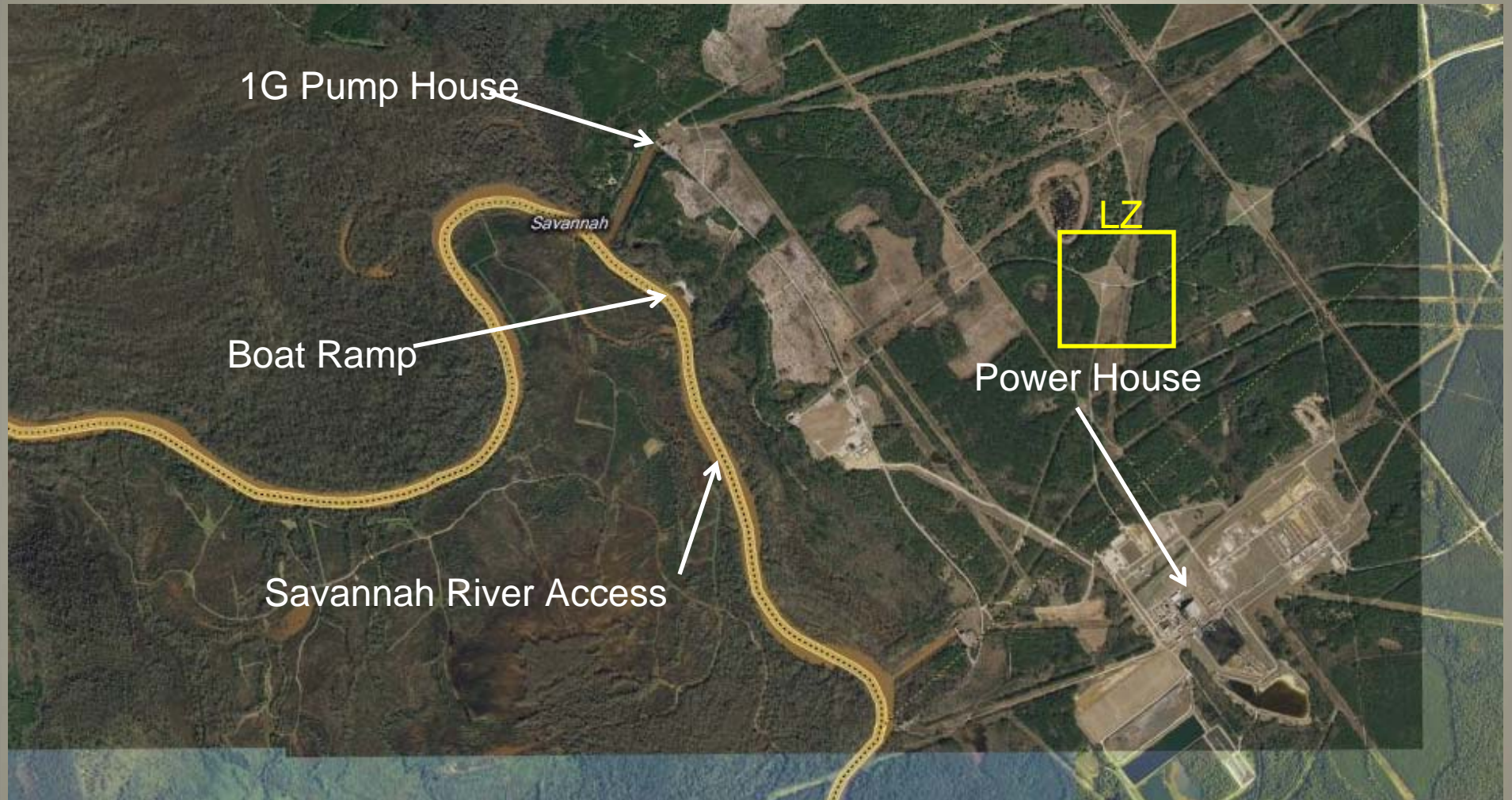


*Communications*

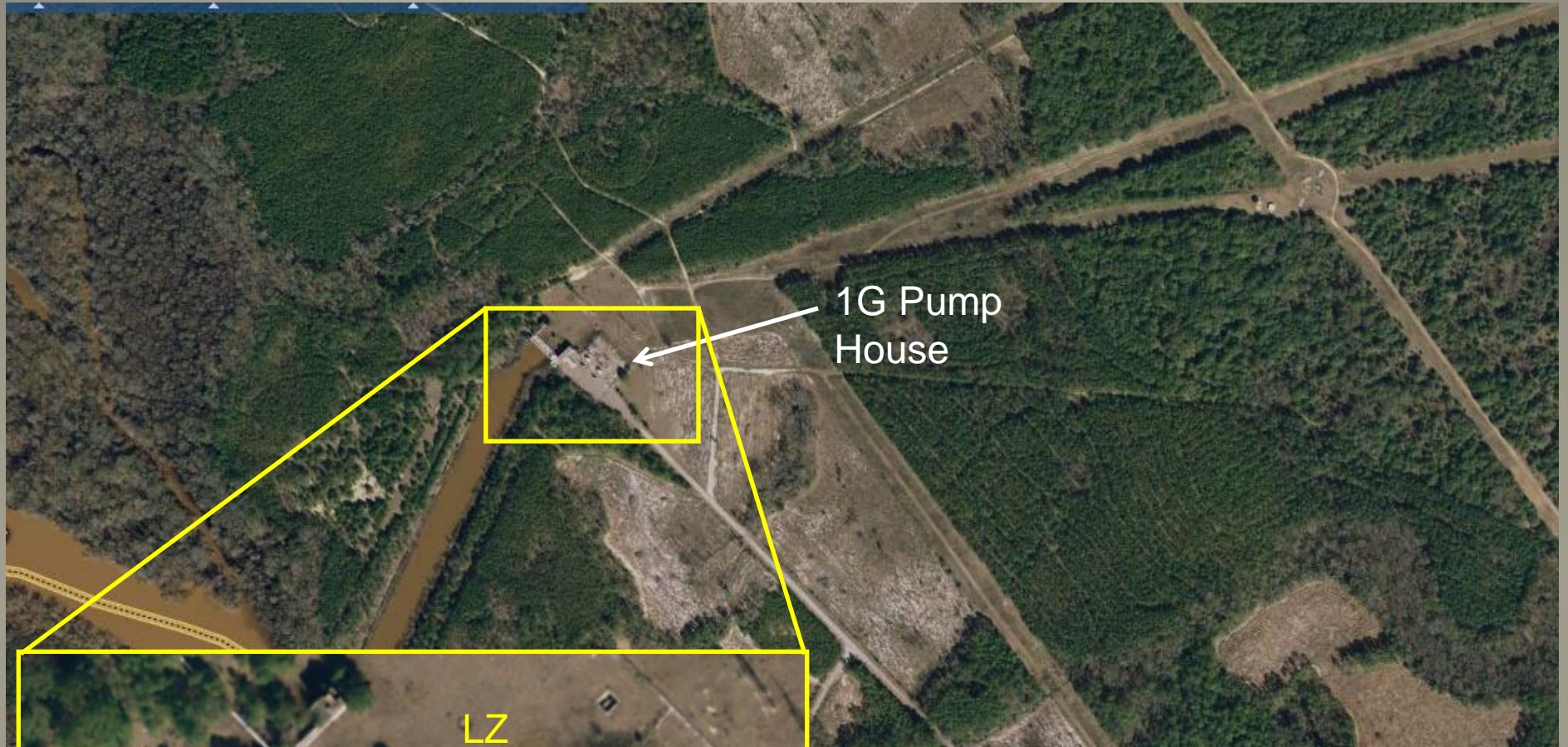
*Tactical  
Operations  
Centers (TOCs)*



# D-AREA







1G Pump  
House



LZ

LZ

D-AREA



# *Barnwell Regional Airport*



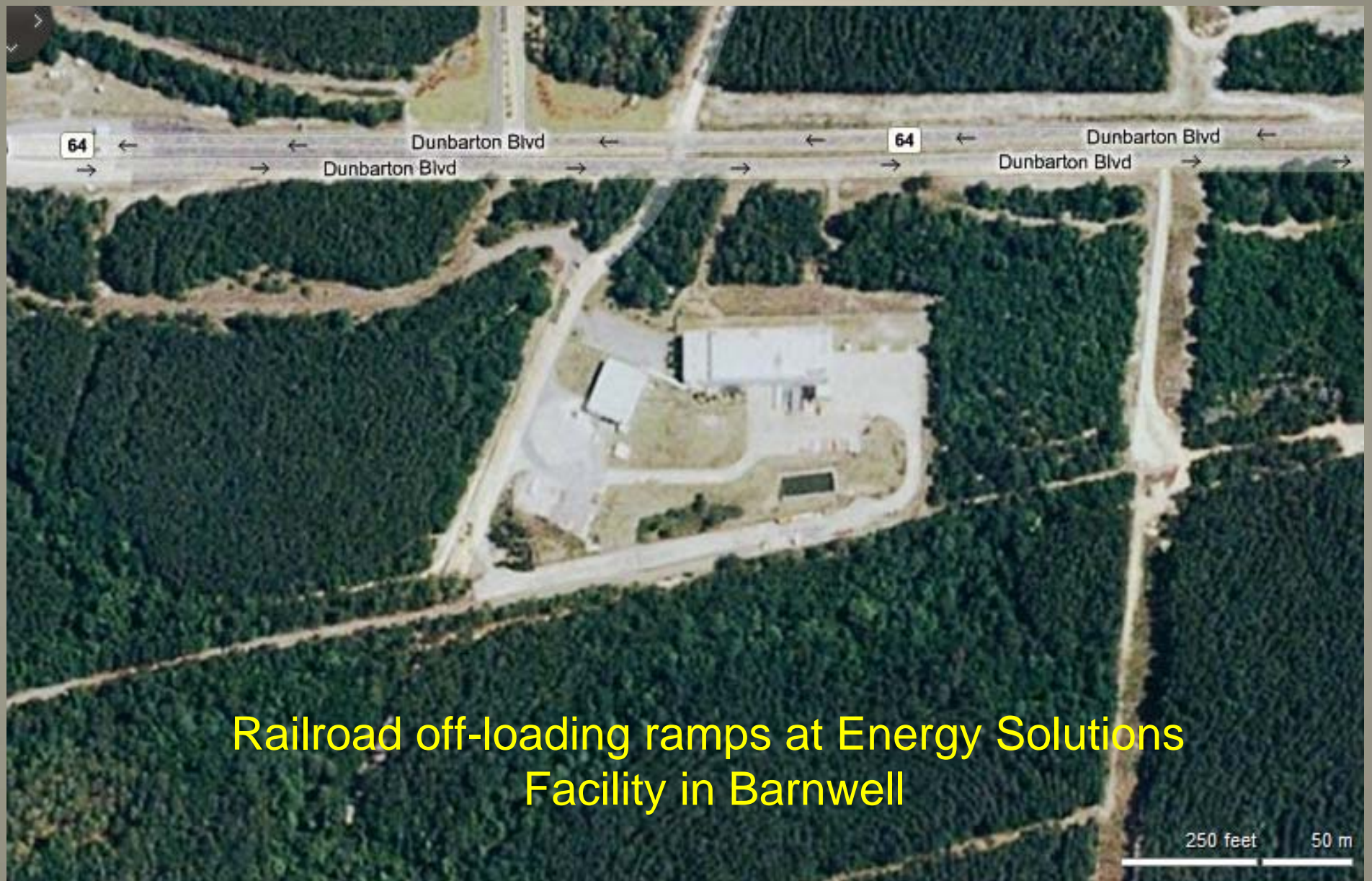
**BARNWELL  
REGIONAL AIRPORT**  
Date of Photo/Version: 11/17/2008  
Scale of Photo: 1"=500'





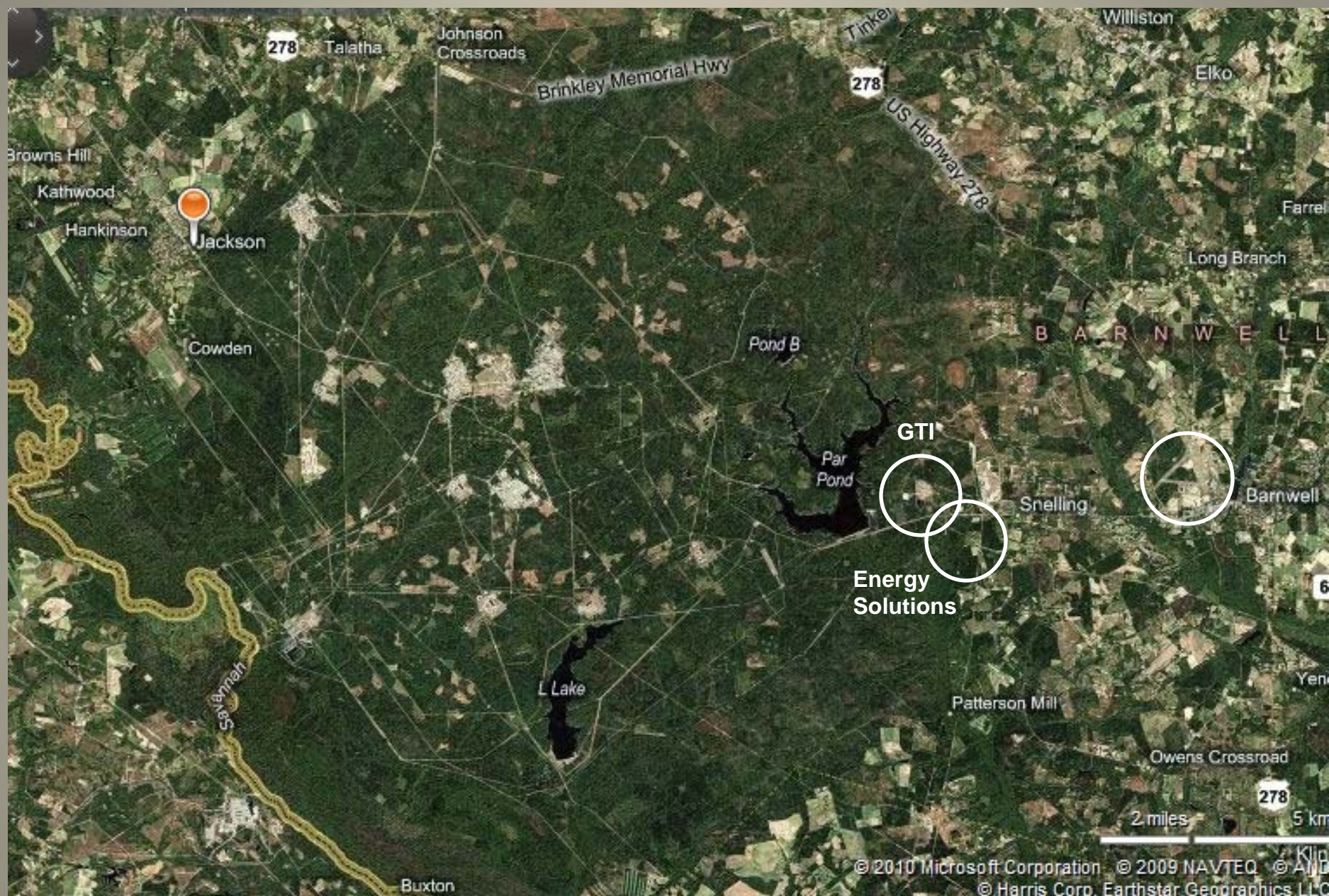






Railroad off-loading ramps at Energy Solutions Facility in Barnwell







# Environmental Concerns

The U.S. Army and the U.S. Army Environmental Command provides protection for Threatened and Endangered Species (TES), Wild Life Management, Wetlands, Forests, and Terrain.



## SRS Protected Species

- Red Cockaded Woodpecker
- Bald Eagle
- American Alligator
- Wood Stork
- Short Nosed Sturgeon
- Pondberry
- Smooth Purple Coneflower



# INRMP 2010 Update Map, Fort Gordon, US Army

- RCW Cluster 2010
- ⊕ Installation Boundary
- ▭ Training Area Boundaries

2010

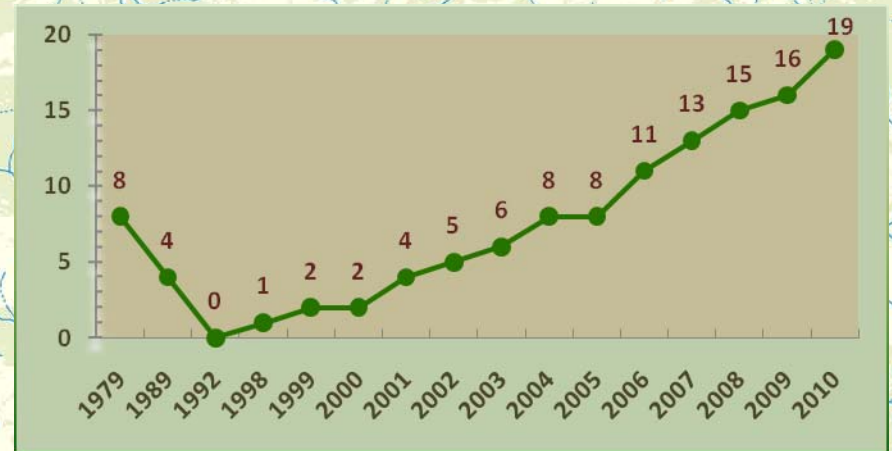
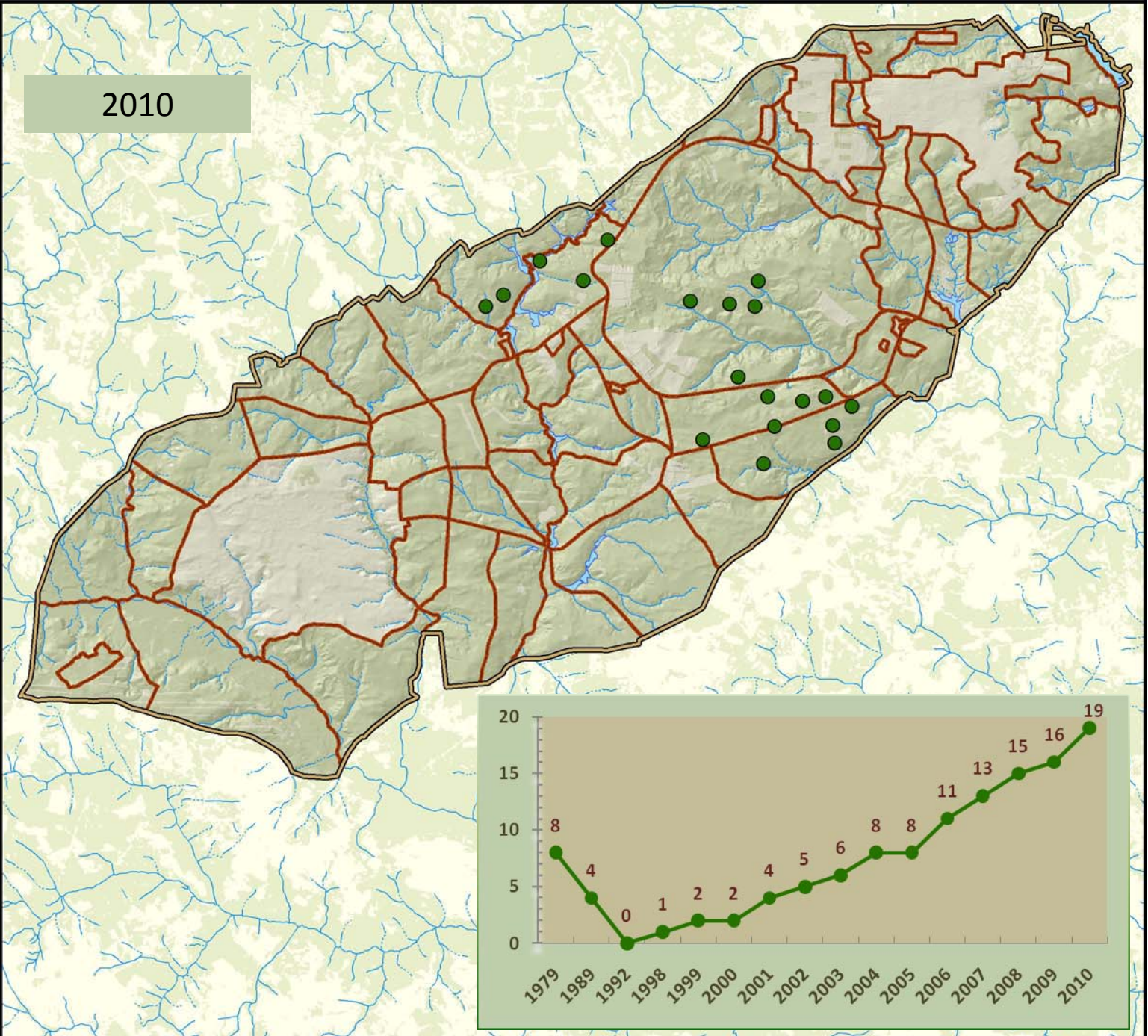
This map was produced by the Fort Gordon Environmental Division-Natural Resources Branch. December 2009

Projection Based on:  
World Geodetic System of 1984  
UTM Zone 17 North  
Units: Meters

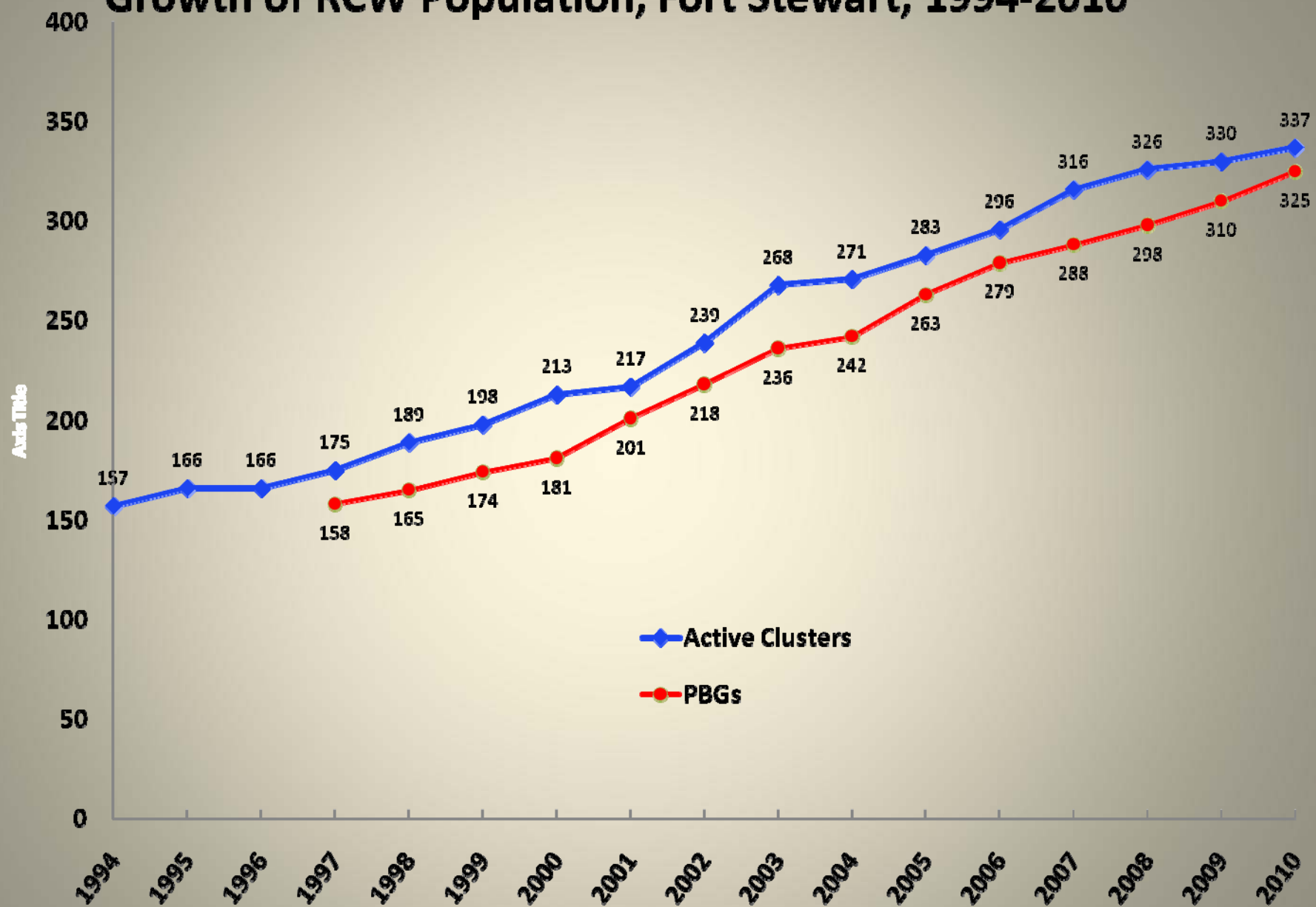
1:135,000

0 1 2 Kilometers

0 0.5 1 Miles



## Growth of RCW Population, Fort Stewart, 1994-2010





# *SRS Environmental Concerns*





# *SRS Environmental Concerns*



Timber Sales and Forest Management





# *Integrated Training Area Management (ITAM)*

- Remediate Areas disturbed by Army Training.
- Design and construct Army training lands and areas.



## *Environmental Impact, Assessment, and Mitigation*

- 90, 60, and 30 day coordination and approval process initiated prior to each unit training event. Some requirements include...
  - > Access control requirements approved by DOE-SR.
  - > Training land and facility locations approved.
  - > Environmentally sensitive areas defined.
  - > Training locations pre-inspected for environmental concern and TES presence.
  - > Controls on specific training events defined.
  - > Equipment / training ammunition lists approved.
  - > Safety and risk analysis completed by unit commanders.
  - > Monthly IMT meeting with SRNS.
  - > Other meeting as required with USFS, SREL, SRSOC...
- All soldiers receive site orientation briefing prior to accessing SRS.
- All soldiers and Army civilians activated into the Remote Worker Program daily.
- Units designate Officers-in-charge and Range Safety Officers (OICs /RSOs).
- Fort Gordon Range Control representation on site for each training event.



## *Environmental Impact, Assessment, and Mitigation*

- Communications established with SRSOC, OIC/RSOs, and Fort Gordon Range Control.
- Fort Gordon Range Control conducts constant inspection of unit training activities on SRS to monitor environmental impact and overall safety.
- 3 days before termination of unit training event, the unit begins to repair maneuver damage under Fort Gordon RC / ITAM supervision.
- Coordination with local communities, counties, and public safety organizations (PAO notifications).
- Fuel and Oil spill prevention and control measures.
- Daily Burn Category monitored through the USFS-SR Fire Dispatch Desk.

# *Questions.....*

*[Donald.S.McLean@us.army.mil](mailto:Donald.S.McLean@us.army.mil)*

*[Donald.McLean@srs.gov](mailto:Donald.McLean@srs.gov)*

*or*

*706-840-5522 work cell*  
*706-791-5005/5008 Office*  
*Site Pager: 21489*