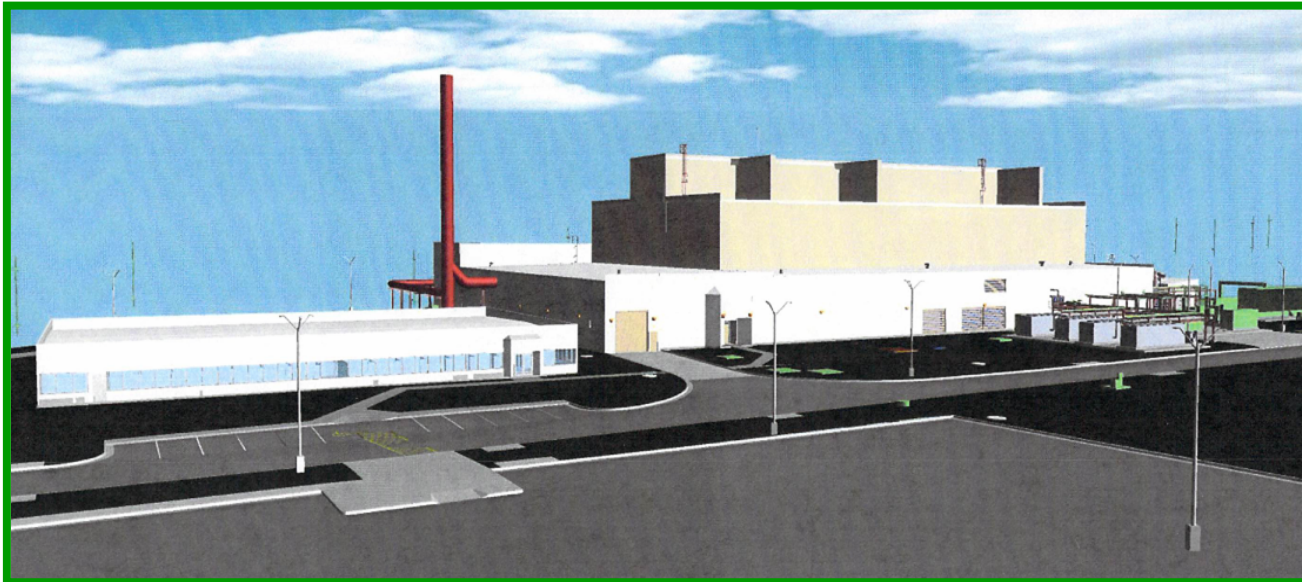


Salt Waste Processing Facility Project

**Citizens Advisory Board Meeting
SWPF Project Status Update
June 28, 2011**



Tony Polk, Federal Project Director



EM *Environmental Management*

safety ❖ *performance* ❖ *cleanup* ❖ *closure*

SWPF Progress

September 2007	Dep. Secretary approved project baseline
August 2008	Started basemat rebar installation
December 2008	Deputy Secretary approved full construction
January 2009	First basemat concrete placed
August 2009	Basemat 100% complete.
March 2010	Walls to Elevation 116' complete
June 2010	Deck at Elevation 116" complete
December 2010	Contractors Arrive on Site



EM *Environmental Management*

safety ❖ *performance* ❖ *cleanup* ❖ *closure*

Aerial View – May , 2011



EM *Environmental Management*

safety ❖ performance ❖ cleanup ❖ closure

Alpha Finishing Facility – ASME Vessel Ring Beams



EM *Environmental Management*

safety ❖ performance ❖ cleanup ❖ closure

Decks at EL. 139' - Operating Deck, Facing East



EM *Environmental Management*

safety ❖ performance ❖ cleanup ❖ closure

Walls to EL. 154' – Operating Deck, ASDT Structural Steel, Facing West



EM *Environmental Management*

safety ♦ performance ♦ cleanup ♦ closure

Tank 201 Installation – CSSX Contactor Drop Area, Facing East



EM *Environmental Management*

safety ❖ performance ❖ cleanup ❖ closure

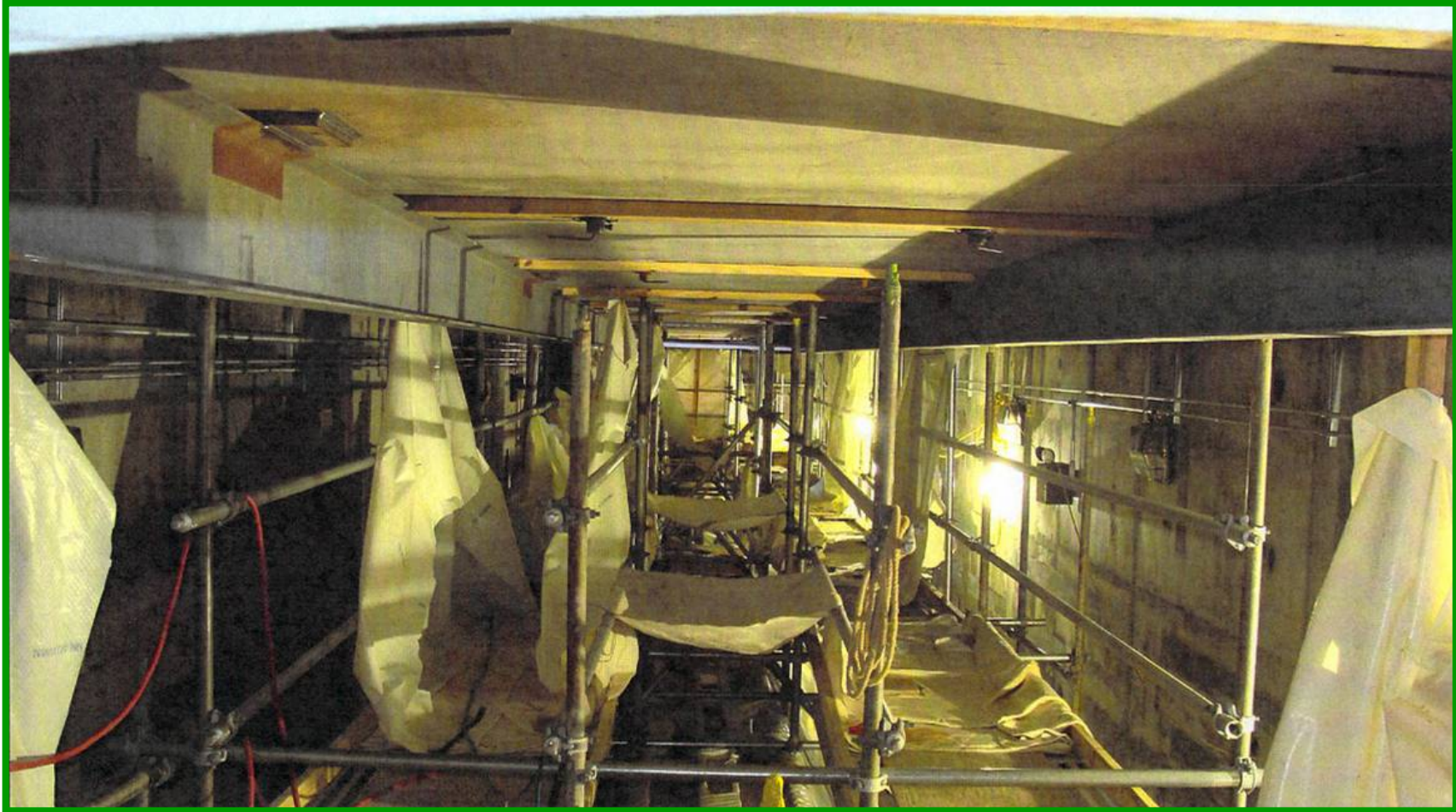
Mechanical Installation, SSRT/WWHT Cell – Facing Southeast



EM *Environmental Management*

safety ❖ performance ❖ cleanup ❖ closure

Monorail Installation – Contactor Support Floor, Facing East



EM *Environmental Management*

safety ❖ performance ❖ cleanup ❖ closure

Precast Panel Installation, Radiochemistry Laboratory, Facing East



EM *Environmental Management*

safety ♦ performance ♦ cleanup ♦ closure

Significant Accomplishments

- Completed liner plate installation in the FFT-A dark cell
- Completed initial coatings work CSSX Labyrinths
- Completed shoring and decking for concrete slabs at EL.139'
- Completed concrete walls to EL. 139'
- Completed pre-tank pipe installation in SSFT Dark Cell
- Completed 1st concrete placement walls to EL. 154'
- Completed the foundation work for the North Facility Support Area
- Fabrication of Large ASME vessels at PCC underway



EM *Environmental Management*

safety ❖ *performance* ❖ *cleanup* ❖ *closure*

Looking Forward

- **Focused Attention on Major Procurements**

- Highest risk to project remains vendor performance
- Significant focus on vendor quality assurance and quality controls to ensure 100% receipt of materials and equipment ready for installation
- Changes in construction execution strategy (horizontal to vertical) to mitigate impact from vendor delivery schedule delays

- **Maintaining Strong Construction Execution Progress**

- Project Schedule Performance continues to support project completion well ahead of the October 2015 baseline date for start of radioactive operations
- Productivity rates continue to meet expectations, while maintaining a strong safety culture.



EM *Environmental Management*

safety ❖ performance ❖ cleanup ❖ closure