



Land Use and Facilities Planning Process

Holt Moran

Savannah River Nuclear Solutions Co., LLC

Citizens Advisory Board

September 25, 2012



Purpose

- To Fulfill Request for Update on the SRS Land Use and Facilities Planning Process
- To Provide an Overview of the Process, Tools and Capabilities (Not a Picture of Siting New Missions)



U.S. DEPARTMENT OF
ENERGY

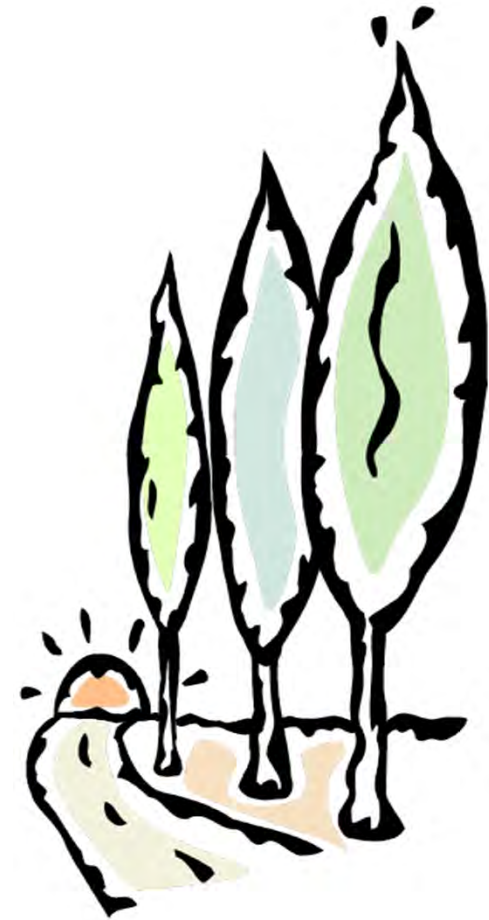


National Nuclear Security Administration

enterprise **srs**

What Is Land Use and Facilities Planning?

- **Process for Planning for the Future Use and Physical Development of SRS in Terms of :**
 - *Land*
 - *Infrastructure*
 - *Facilities*
 - *Natural Resources and Environment*
- **Supports Current Missions as well as Opportunities Evolving From E.SRS**



U.S. DEPARTMENT OF
ENERGY



enterprise·srs

Physical Complexity and Size of SRS

- 310 Square Miles
- Over 7 Million Square Feet of Buildings
- Workforce ----- ≈12,600
- Roads ----- 119 Miles / 8 Bridges
- Power Lines ----- 132 Miles
- Steam Lines ----- 25-30 Miles
- Domestic Water Lines ----- 58 Miles
- Railroads ----- 33 Miles
- River/Process Water Lines ----- 24 Miles
- National Environmental Research Park
- Significant Protected Species, Wildlife and Forest Resources



U.S. DEPARTMENT OF
ENERGY



enterprise·srs

Current Missions and Major Tenants

- Environmental Management
 - Liquid Waste – Savannah River Remediation
 - Solid Waste, Nuclear Materials, Soil, Groundwater, Facilities , Site Landlord Services – Savannah River Nuclear Solutions
 - Salt Waste Processing Facility – Parsons
- National Nuclear Security Administration
 - Defense Programs – Savannah River Nuclear Solutions
 - Nuclear Nonproliferation Programs - Shaw AREVA MOX Services
- Savannah River National Laboratory
- Security Services – WSI-SRS Team
- Savannah River Ecology Laboratory – University of Georgia
- Land Management - United States Department of Agriculture Forest Service
- Sanitary Waste Landfill - Three Rivers Solid Waste Authority
- Biomass Cogeneration Facilities - Ameresco



U.S. DEPARTMENT OF
ENERGY



enterprise·srs

Enterprise•SRS: Strategic Initiatives



National
Security



Clean
Energy



Environmental
Stewardship

Enterprise•SRS Strategic Initiatives

●	●	●	Center for Nuclear Materials Research
●	●	●	Nuclear Fuel Cycle Solutions
		●	Liquid High Level Waste Dispositioning
●	●		Small Modular Reactors Deployment
●	●	●	Nuclear Materials Disposition and Reuse
●			Helium-3 Supply
		●	Next Generation Cleanup Technologies
●			National Security Programs
●			Tritium Infrastructure
		●	National Radioecology Expansion

Enterprise•SRS will continue to pursue asset revitalization as a cross-cutting effort, to help the Savannah River Site retain and grow our nuclear expertise and to repurpose and reuse our facilities and land, consistent with the DOE ARI task force efforts.



U.S. DEPARTMENT OF
ENERGY



enterprise•srs

Land Use and Facilities Planning - Key Assumptions

- **SRS Land Will Remain Under Ownership of the DOE and Current Site Boundaries Will Remain Unchanged**
- **Natural Resources and Environmental Assets Will be Protected**
- **Environmental Research Activities Will Continue**
- **Current Missions Will be Supported**
- **SRS Will be Postured to Receive New Missions**
- **Opportunities to Reuse Existing Assets Will be Enhanced**
- **Residential Use of SRS Land Will be Prohibited**

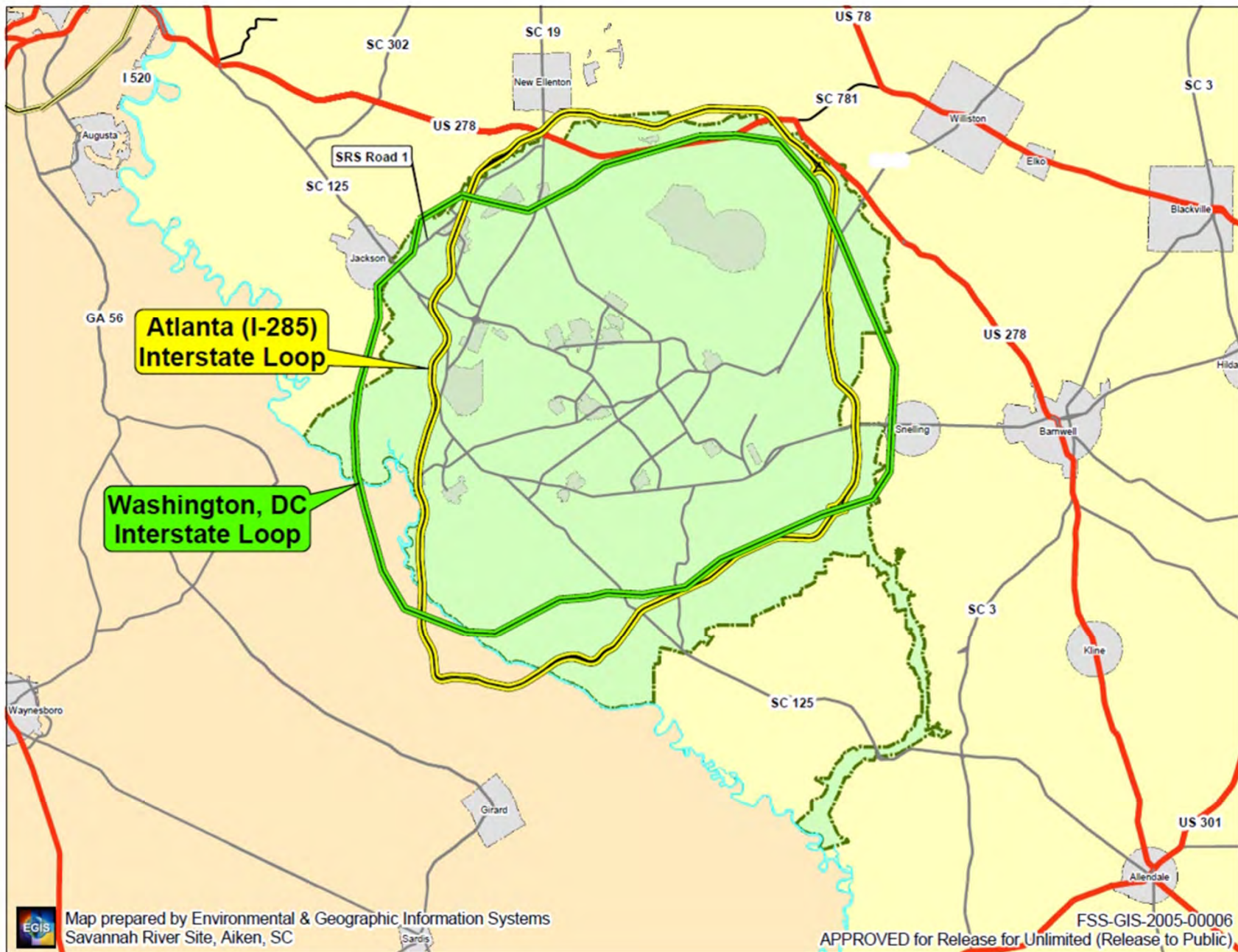


**U.S. DEPARTMENT OF
ENERGY**



enterprise·srs

Geographic Information System (GIS) Tools



Summary

SRS Will Support Current Missions and Transformation Through Enterprise•SRS Initiatives By:

- **Continued Refinement of The Land Use and Facilities Planning Process**
- **Enhancement and Development of the Planning Tools and Data Capabilities**



**U.S. DEPARTMENT OF
ENERGY**



enterprise•srs