

*A presentation to the
SRS Citizens Advisory Board*

Federal Facility Agreement Appendix E

**Presentation By
Brian Hennessey, SRS Remedial Project Manager
Department of Energy Savannah River Operations Office**

January 29, 2013



Purpose

- Provide information discussed in response to Citizens Advisory Board Recommendation #279, Federal Facility Agreement (FFA) Update Provided Annually
 - Information briefing on Rev. 0 FY2013 Appendix E Submittal



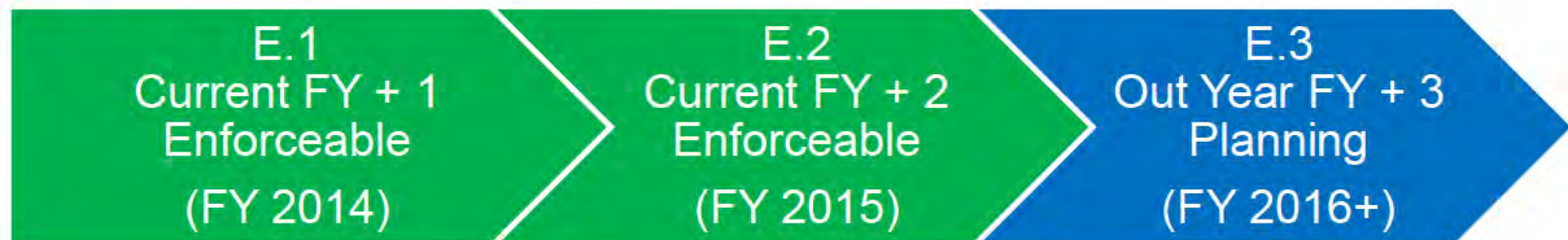
Federal Facility Agreement

- *Established August 1993*
 - A legally binding agreement among DOE, EPA, and SCDHEC governing the comprehensive cleanup of the SRS
 - Includes administrative requirements, enforceable schedules, and milestones for actions and documents
 - Includes Removal from Service of some Liquid Waste tanks
 - Spells out authorities and responsibilities of agencies and procedures for resolving disputes






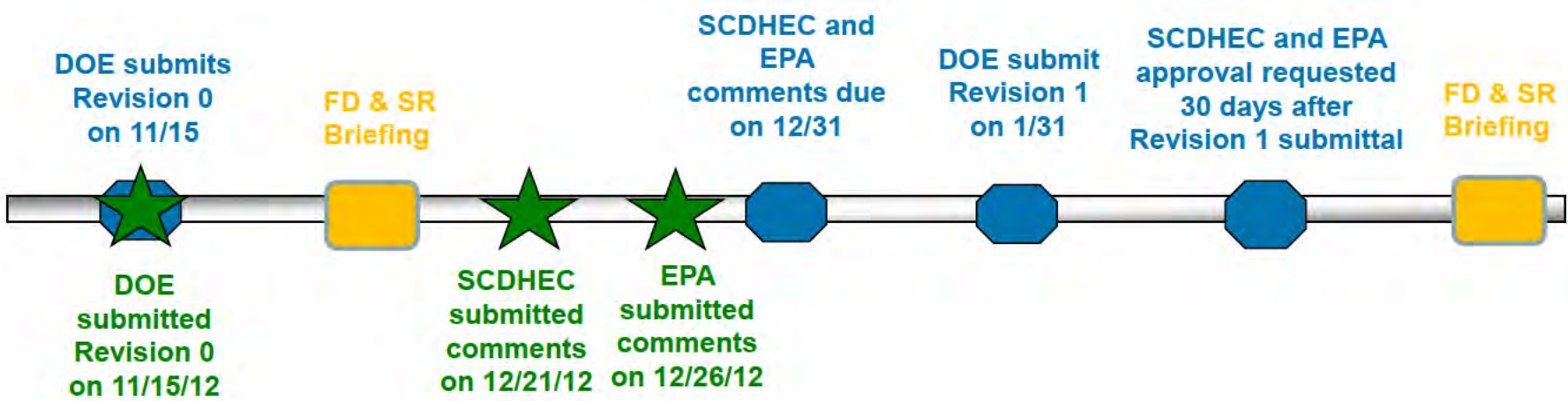
FFA Appendix E

- Provides a lifecycle list of cleanup milestones for SRS Waste Sites
 - Made up of Appendices E.1, E.2, and E.3
 - Appendix E.1 contains Enforceable Milestones for the next Fiscal Year (FY+1)
 - Appendix E.2 contains Enforceable Milestones for FY+2
 - Appendix E.3 contains Planning Milestones for FY+3 and beyond
- DOE updates Appendix E annually and submits for review to SCDHEC and EPA in November

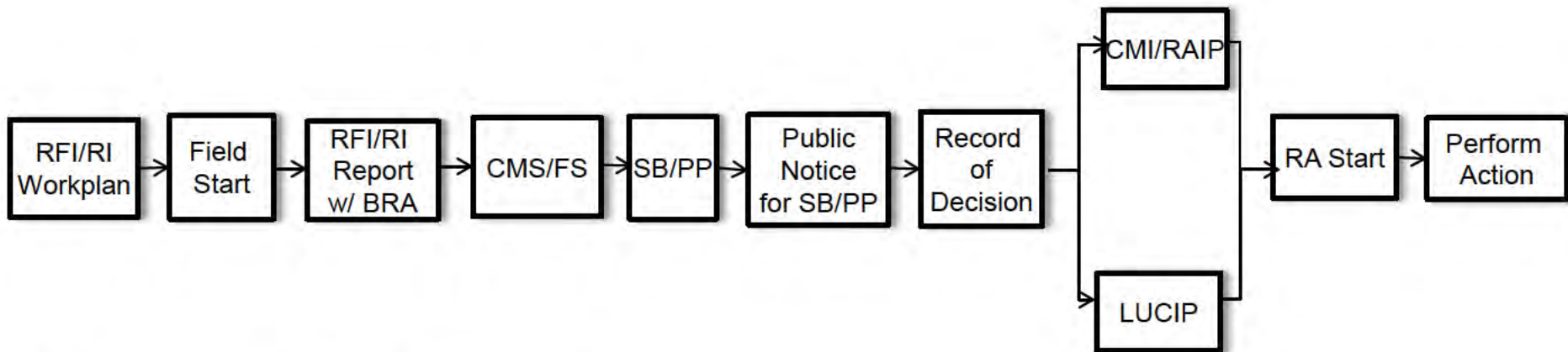


FFA Appendix E Schedule

-  Appendix E dates (per FFA)
-  Actual FY 2013 Appendix E dates
-  FD & SR Briefing



FFA Document Flow



RFI/RI = RCRA Facility Investigation/Remedial Investigation

BRA = Baseline Risk Assessment

CMS/FS = Corrective Measures Study/Feasibility Study

SB/PP = Statement of Basis/Proposed Plan

CMI/RAIP = Corrective Measures Implementation/Remedial Action Implementation Plan

LUCIP = Land Use Control Implementation Plan

RA = Remedial Action



FY 2013 FFA Appendix E - FY 2014 and FY 2015 Milestones

- E.1 (FY2014) and E.2 (FY2015)

FY2014

- **Field Starts**

- Steel Creek Integrator Operable Unit Fifth Phase II
- P-Area Groundwater Operable Unit

- **Statement of Basis/Proposed Plan**

- C Area Operable Unit Early Action

- **Record of Decision**

- Wetland Area at Dunbarton Bay

- **Issue Record of Decision**

- Fourth Five-Year Remedy Review Report
- Wetland Area at Dunbarton Bay

- **Post-Record of Decision Documents**

- A-Area Ash Pile (788-A), A-Area Coal Pile Runoff Basin (788-3A), and Stormwater Outfall A-013 Corrective Measures Implementation/Remedial Action Implementation Plan
- A-Area Ash Pile (788-A), A-Area Coal Pile Runoff Basin (788-3A), and Stormwater Outfall A-013 Land Use Control Implementation Plan
- B Area Operable Unit Corrective Measures Implementation Report/Remedial Action Completion Report

- **Remedial Action Start**

- B Area Operable Unit



FY 2013 FFA Appendix E - FY 2014 and FY 2015 Milestones (cont'd)

- E.1 (FY2014) and E.2 (FY2015) (cont'd)

FY2014 (cont'd)

- **Post-Remedial Action Start Documents**
 - Eleven (11) Reports that Discuss the Performance of the Selected Remedial Action
- **Integrator Operable Unit Periodic Reports**
 - Upper Three Runs Integrator Operable Unit Periodic Report 4
- **High Level Radioactive Waste Tanks**
 - Complete Bulk Waste Removal Efforts for Two (2) Tanks (Completed Ahead of Schedule)

FY2015

- **Field Starts**
 - Upper Three Runs Integrator Operable Unit Fourth Phase II
- **Statement of Basis/Proposed Plan**
 - C Area Groundwater Operable Unit (Castor Creek) Interim Action
- **Record of Decision**
 - C Area Groundwater Operable Unit (Castor Creek) Interim
 - C Area Operable Unit Early Action
- **Issue Record of Decision**
 - Issue C Area Operable Unit Early Action



FY 2013 FFA Appendix E - FY 2014 and FY 2015 Milestones (cont'd)

- E.1 (FY2014) and E.2 (FY2015) (cont'd)

FY2015 (cont'd)

– Remedial Action Start

- A-Area Ash Pile (788-A), A-Area Coal Pile Runoff Basin (788-3A), and Stormwater Outfall A-013

– Post-Remedial Action Start Documents

- Eleven (11) Reports that Discuss the Performance of the Selected Remedial Action

– Integrator Operable Unit Periodic Reports

- Pen Branch Integrator Operable Unit Periodic Report 4

– High Level Radioactive Waste Tanks

- Complete Operational Closure of Four (4) Tanks

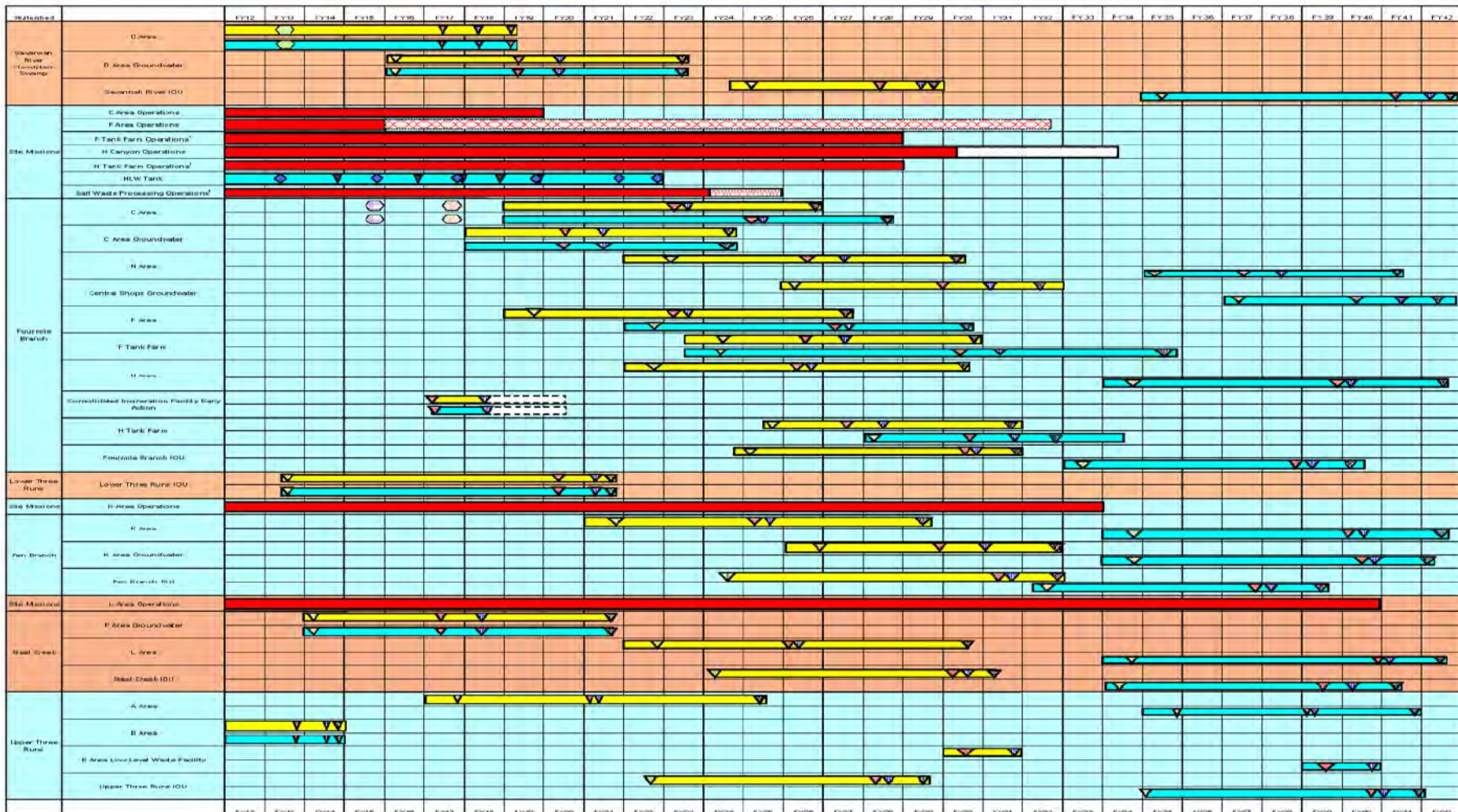


FY 2013 FFA Appendix E - Major Changes

- E.3 (FY2016+)
 - End of program date extended to 2042
 - H Canyon Operations for dry blending plutonium from K Area with inert materials for final disposal
 - K Area Operations for storage of plutonium to be shipped to H Canyon
 - L Area Operations for continued storage of spent (used) nuclear fuel while awaiting disposition decision
 - Facilities/areas required to support these ongoing missions
 - Integrator Operable Unit (IOU) schedules revised to re-sequence closure of the IOUs so that the Savannah River and Floodplain Swamp IOU is the last IOU to be remediated since the other IOUs feed into the Savannah River and Floodplain Swamp IOU.



SRS Area Completion Plan



Legend

FY2012 Appendix E Rev. 1
 FY2013 Appendix E Rev. 0
 Other Site Missions
 Actual Duration Unknown
 Potential Mission Supporting F- and H Tank Farm Operations
 SWP Cleaning/Training
 H Canyon Cleaning/Refurbish

Construction
 Operations
 Maintenance
 Other Site Missions
 Actual Duration Unknown
 Potential Mission Supporting F- and H Tank Farm Operations
 SWP Cleaning/Training
 H Canyon Cleaning/Refurbish

IOU SMT
 SWP IOU
 IA SMT
 SWP FOR SMT
 SWP FOR SMT
 Operations Closure of Area
 Performance Assessment
 ADU SWP SMT As Per ROD
 ADU SWP SMT As Per ROD
 ADU SWP SMT As Per ROD

¹ This was dated by these site missions established on the Liquid Waste System Plan (SRS-LWS2009-0001, Rev. 0, February 20, 2012), which has been approved by DOE.

Questions and Answers

?

?

?

?

