




Natural Resources Management Plan for the Savannah River Site

Presented by Keith Lawrence

Forest Manager

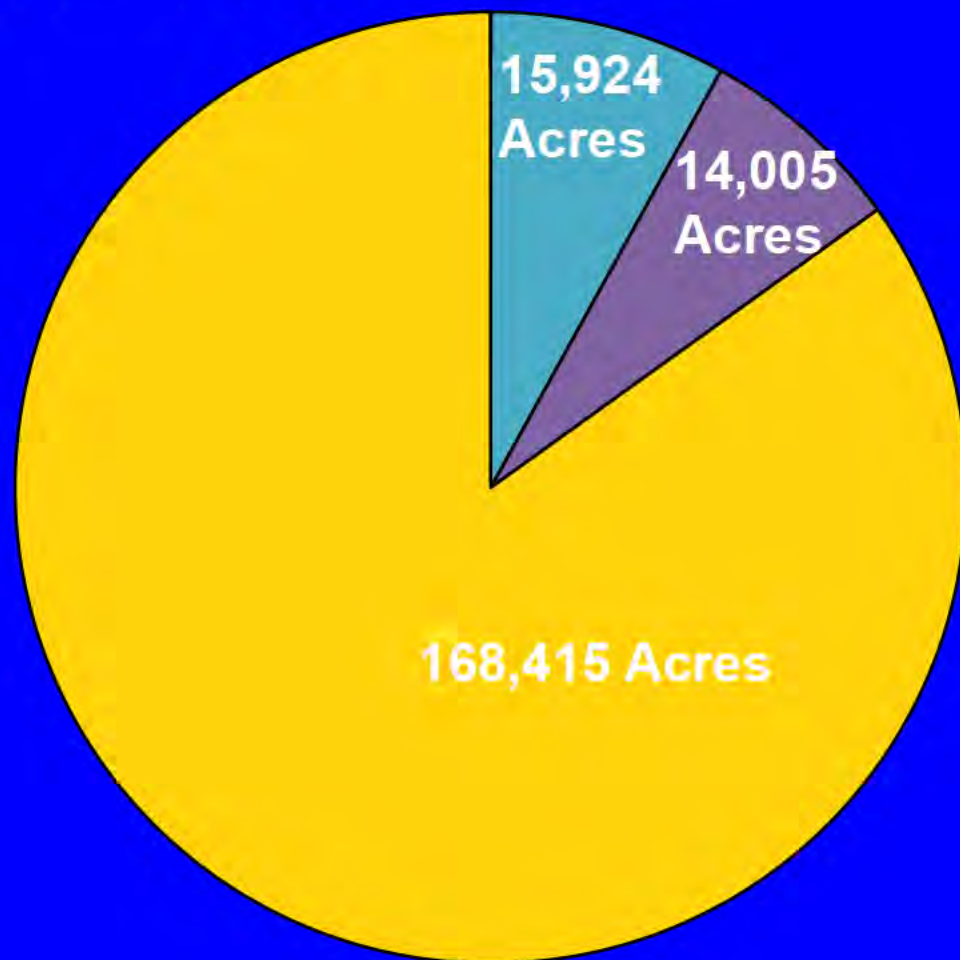
USDA Forest Service – Savannah River



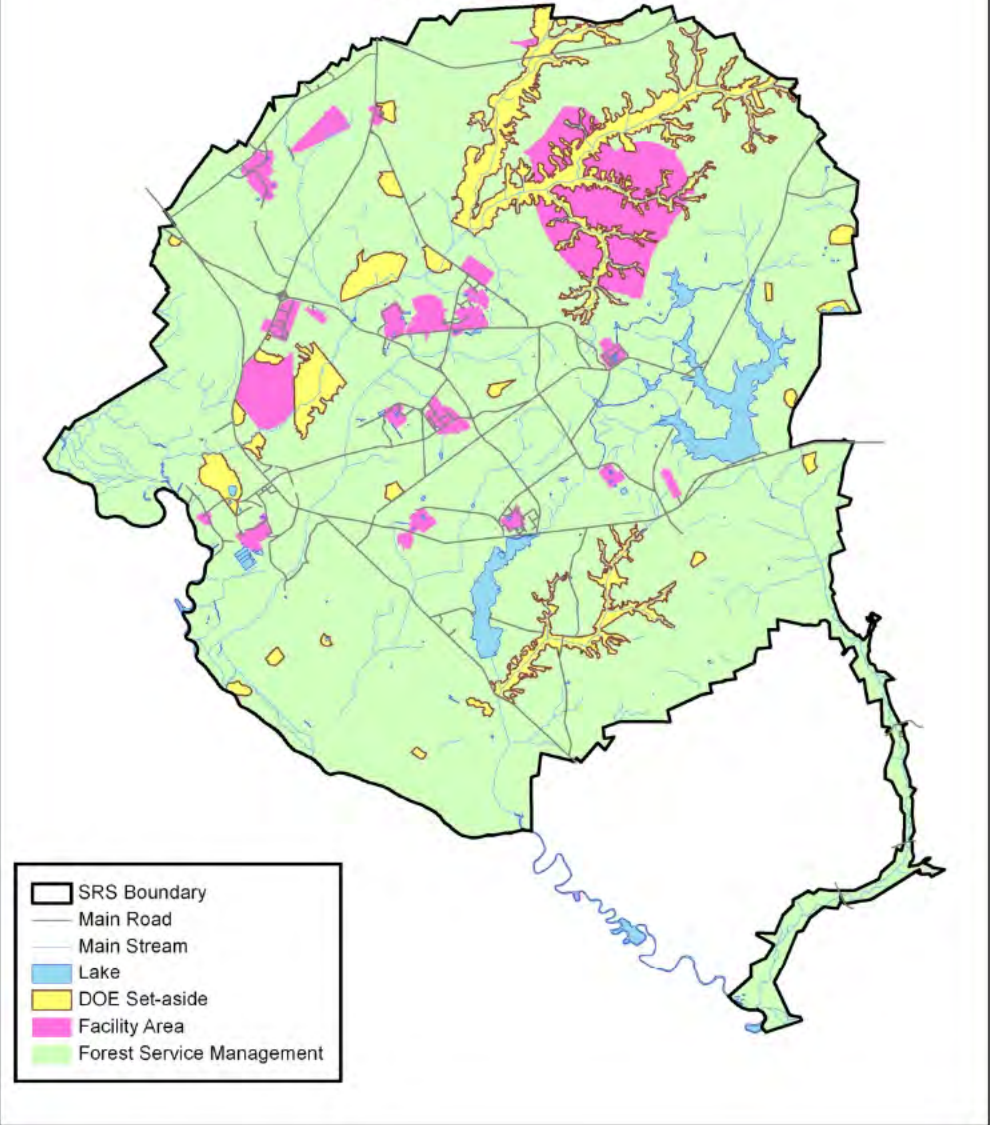


**Purpose: Provide update on
implementation of the United States
Department of Energy Natural Resources
Management Plan (NRMP) for the
Savannah River Site, May 2005 edition**

Land Uses at SRS



SRS Land Use



SRS Management Areas

- Primary RCW
- Supplemental RCW
- Industrial core
- Crackerneck
- Swamp
- Lower Three Runs corridor



Research

Threatened, Endangered & Sensitive Species

- Analyze red-cockaded woodpecker foraging requirements
- Assess big-eared bat habitat and population levels

Wetland Restoration

- Finish baseline assessment of SRS stream conditions
- Develop strategy to restore headwaters, stream channels

Bioenergy

(Supports E-SRS alternate energy initiatives)

- Determine optimum production practices for bioenergy feed stocks
- Study water quality impacts and effectiveness of BMPs

Biodiversity and Ecological Restoration

- Quantify snags/large deadwood & importance to wildlife
- Restore longleaf pine savannas

Fire Management

- Map hazardous fuels, extreme wildfire behavior potential

Other Research

- Determine impacts of coyote predation on deer populations
- Provide a comprehensive forest vegetation inventory using LiDAR field plots
- Assess carbon stock and CO₂ exchange in forest

Research



A grinder (left) sends logging debris piles thru a conveyor belt to a chip van.



This flume measures storm flow and serves as a sample point for water chemistry samples.

Research Set-Asides



Secondary Roads, Boundary & Trails Management



Secondary Roads, Boundary & Trails Management



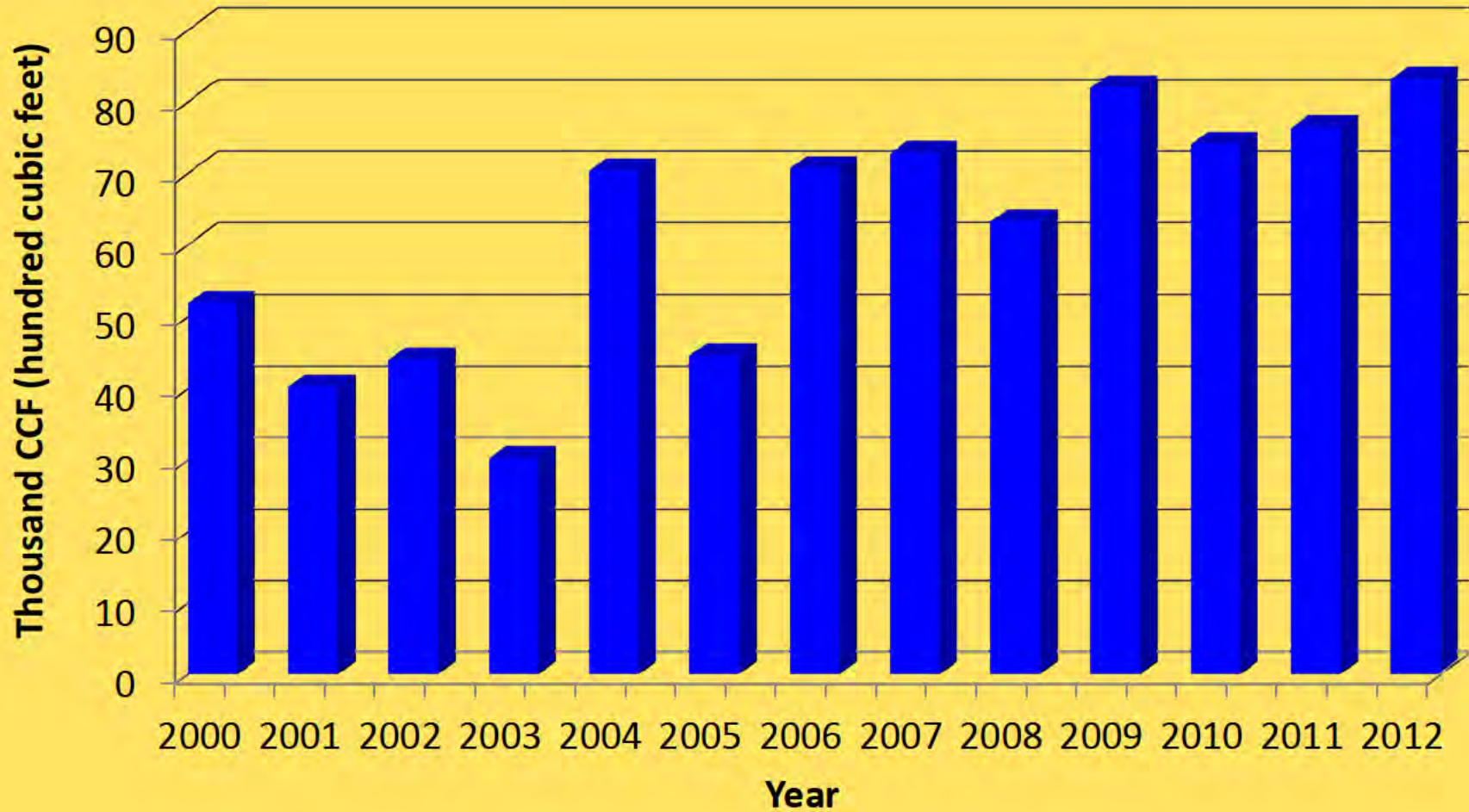


Watershed Management

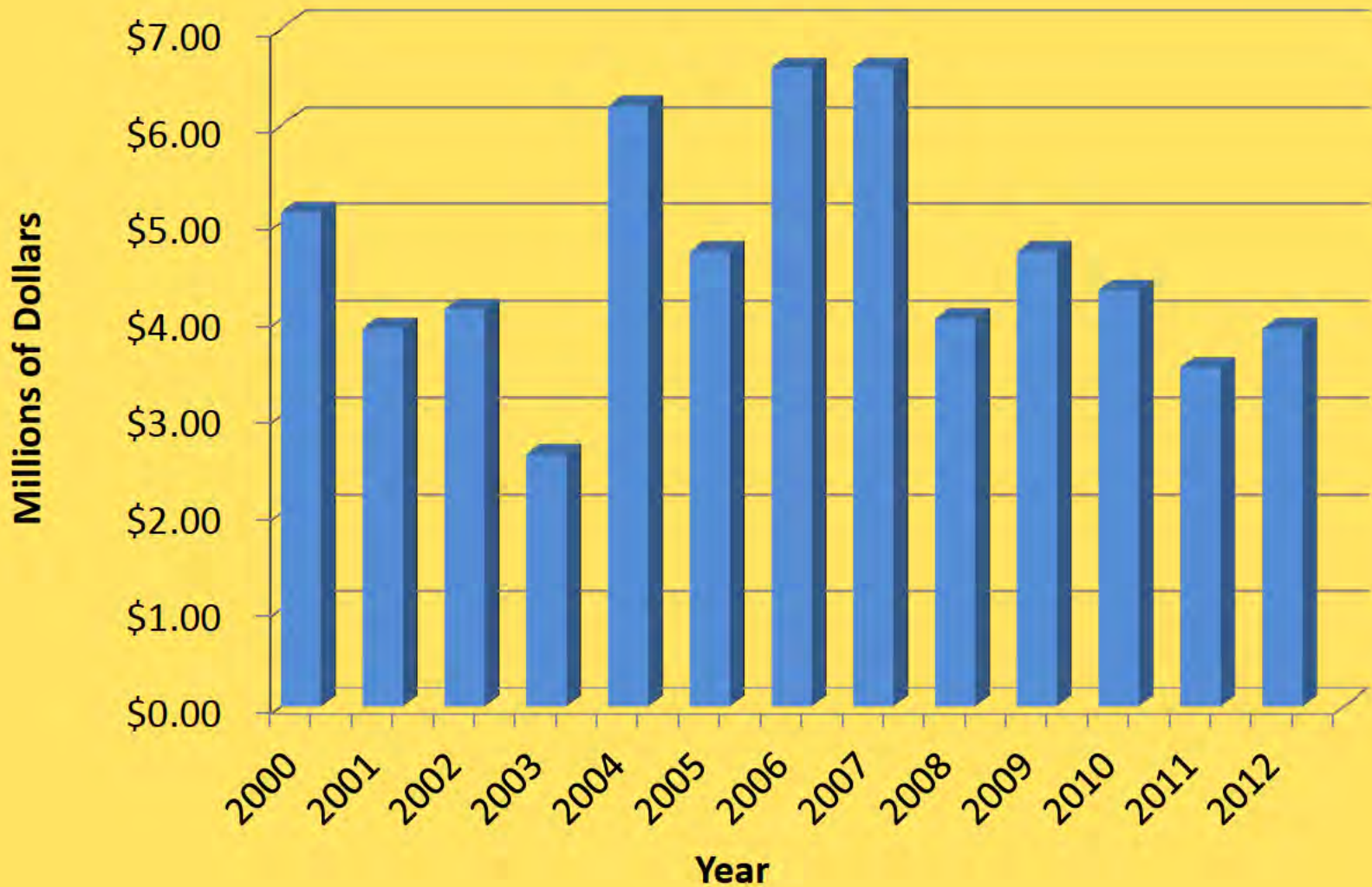
Forest Management



Timber Volume Sold



Timber Value Sold



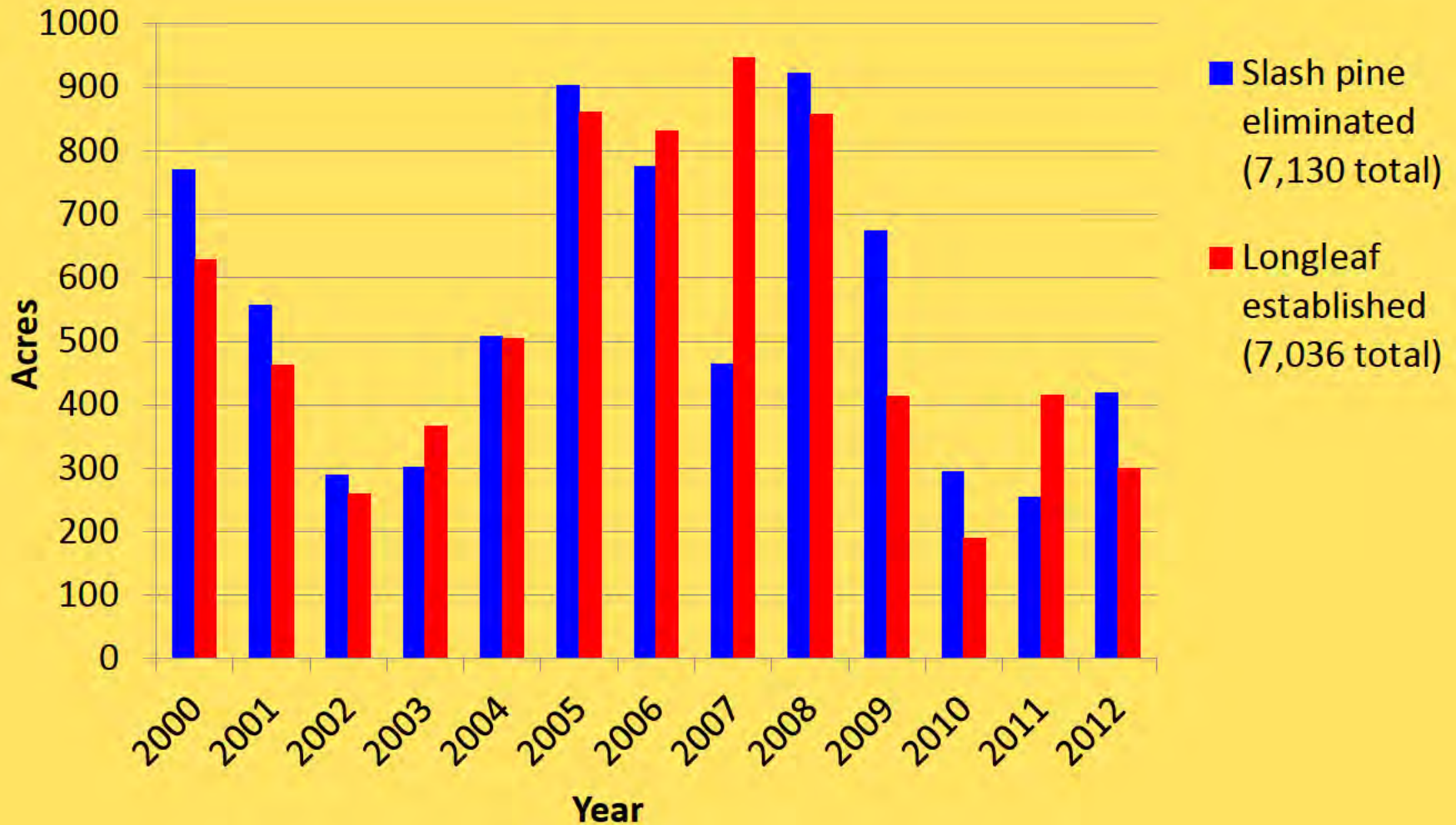
Slash Pine



Longleaf Pine



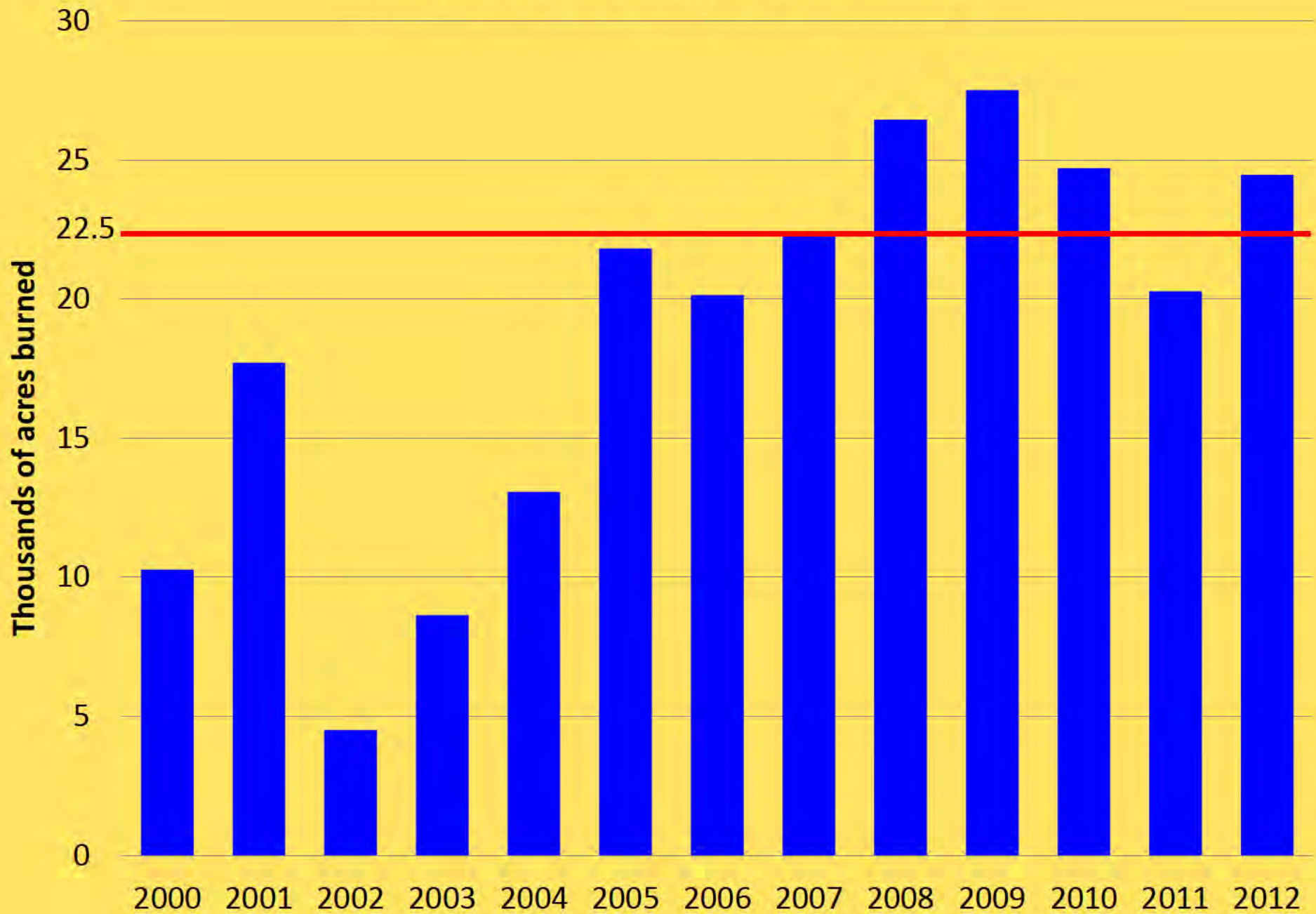
Slash pine eliminated vs. longleaf established



Fire Management



Prescribed Fire Accomplishments



Before Prescribed Fire



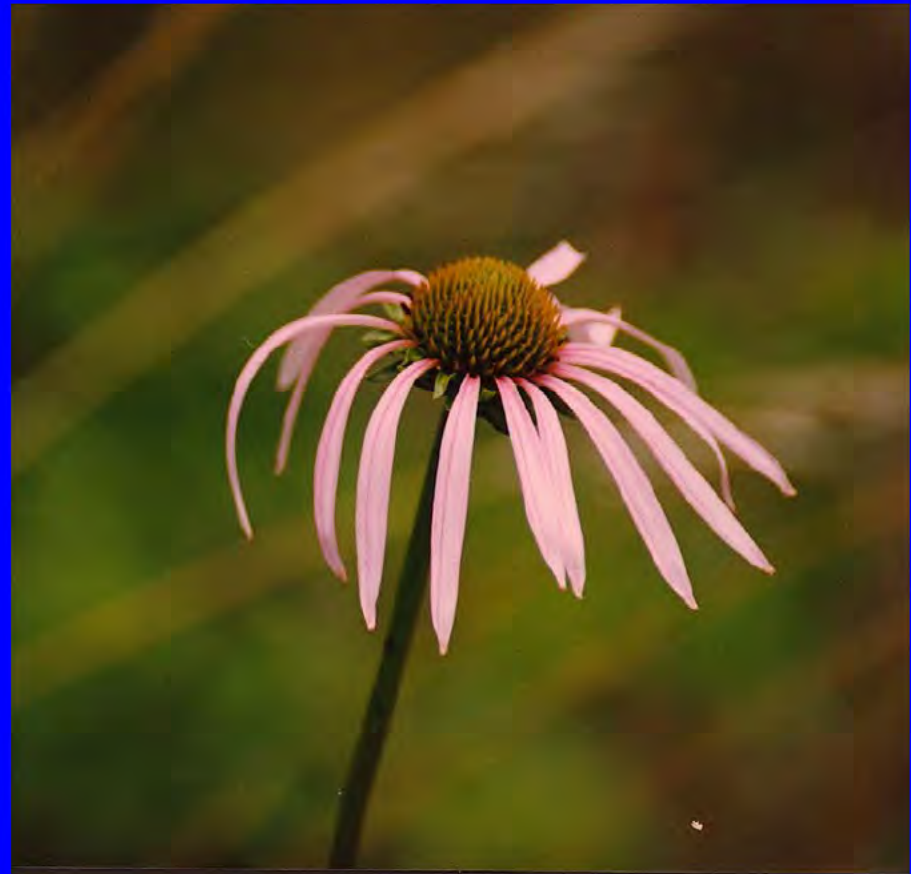
After Prescribed Fire



Management for Threatened, Endangered, Sensitive Species



Red-cockaded
woodpecker (RCW)

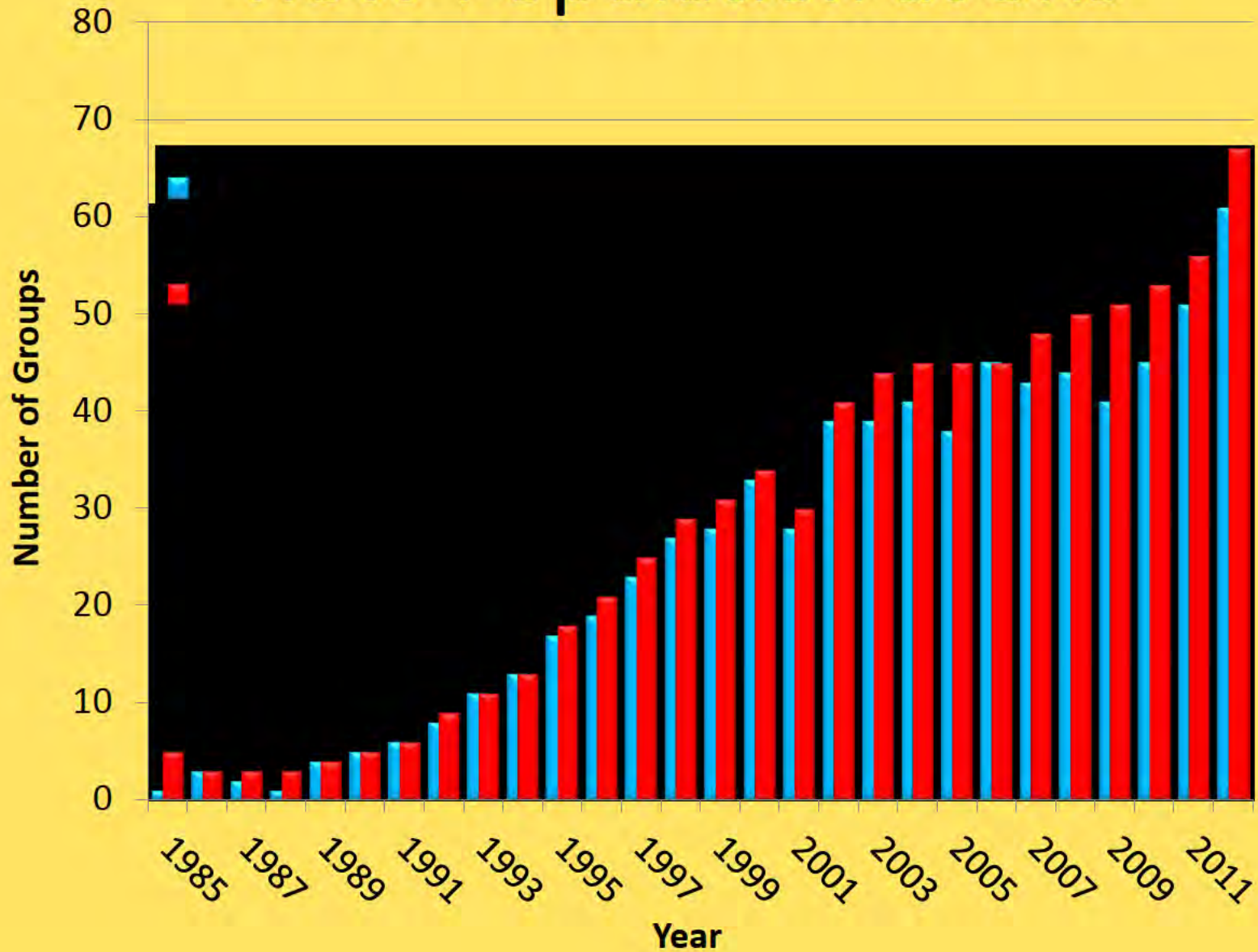


Smooth coneflower

Red-cockaded Woodpecker



RCW Population at SRS



Natural Resources Management Plan for SRS

- **Good progress made in reaching goals**
- **No changes in the plan anticipated at this time**

Contact: Keith Lawrence, Forest Manager
803-725-0296, klawrence@fs.fed.us



U.S. Department of Agriculture
Forest Service
Southern Region