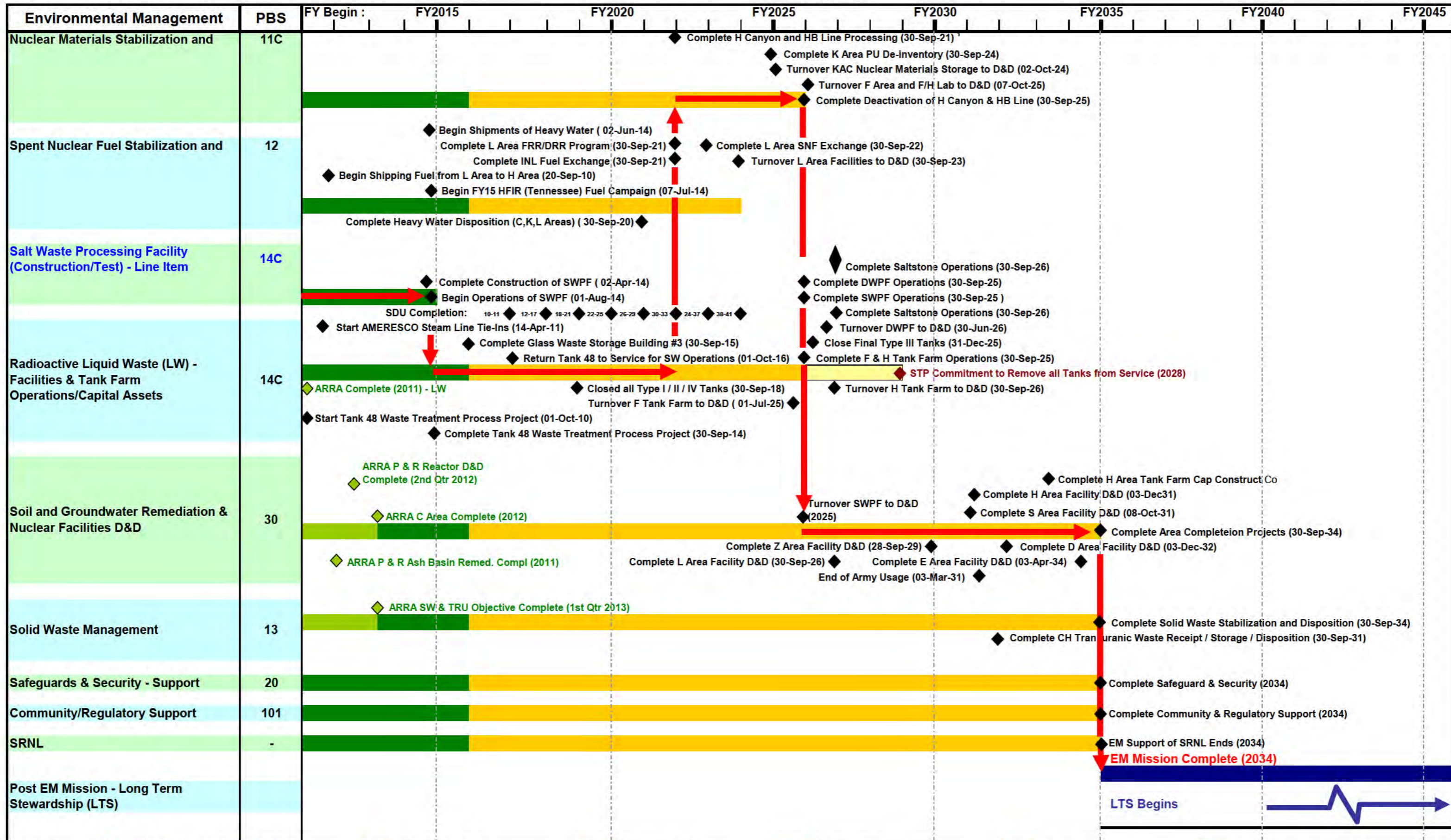


# SRS EM PROGRAM LIFECYCLE

(FY2011 - FY2034)

FY11 Update



**Legend:** ◆ Capital Assets/Line Item Milestone    ➔ Critical Path<sup>2</sup>    Recovery Act    EM Base Programs    Out Years    Legacy Management (LM)

This is only a planning assumption. The decision on the final disposition path for surplus non-pit plutonium not suitable for use in the Mixed Oxide Fuel Fabrication Facility will be decided upon completion, approval, and issuance of the appropriate National Environmental Policy Act Documents, including a Record of Decision.

<sup>2</sup> This version of the SRS EM Program Lifecycle Critical Path, according to the FY11 IFB, is for planning purposes at this time.