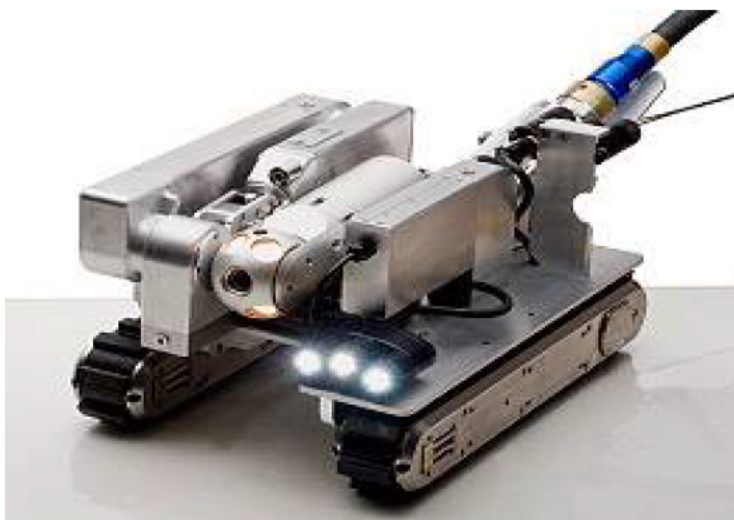
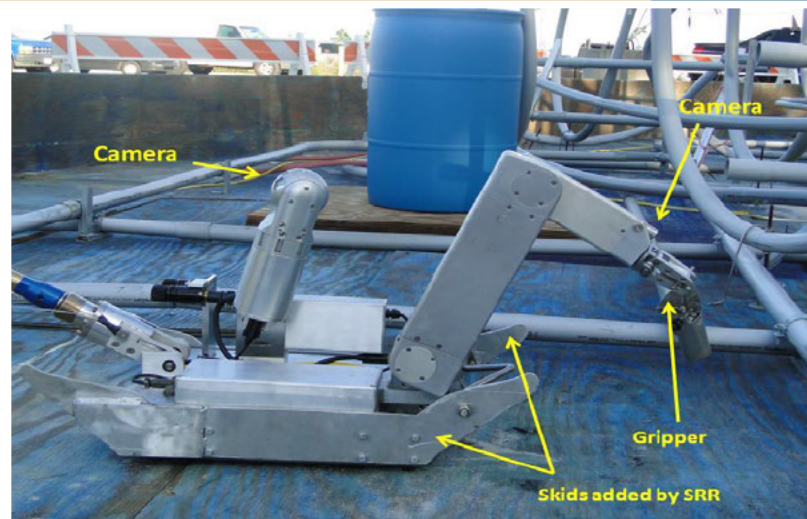


# Tank Characterization Sampling Overview



## Sample Crawler Versatrax 450 Manufactured By Inuktun USA

- First used to sample Tanks 5 & 6
- Due to radiological concerns left in tank after use.



- Designed for pipe inspections
- 20" L x 15" W x 13" H (20" w/camera Raised)
- Weight - 100lbs
- Material - Aluminum
- 2 cameras / lights (3 sets)
- Manipulator - 4 function arm

Modification made by  
SRR base on  
lessons learned



- Skids (assist in transiting coils)
- Lifting bail - allows deployment in tank
- Replaced arm fasteners with hardened bolts
- Added undercarriage cage
- Replaced aluminum tracks with stainless steal
- Added splash guard for camera

**UNCLASSIFIED**

DOES NOT CONTAIN  
UNCLASSIFIED CONTROLLED  
NUCLEAR INFORMATION

ADC &  
Reviewing  
Officer

(Name and Title)

Date

September 29, 2014

SRR-LWE-2014-00144  
Sept. 15<sup>th</sup>, 2014

# Tank Characterization Sampling Overview

## Challenges

Limited  
Access



Tank 5 Crawler insertion

Internal  
Obstruction

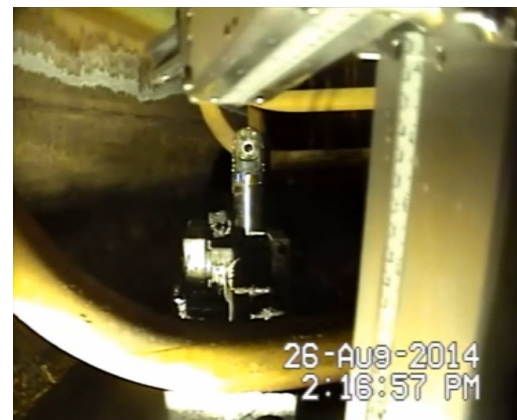


Tank 5 Cooling coils  
before sampling/grouting

SRR-LWE-2014-00144  
Sept. 15<sup>th</sup>, 2014

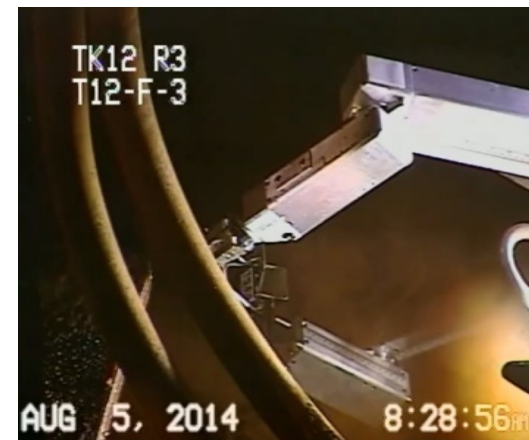
## First Time Operations (Tank 12)

Multiple Crawler  
Operation



Tank 12 Two crawler sample  
hand off

Wet  
Sampling



Tank 12 Sampling through  
water