



United States Department of Agriculture

Forest Service Savannah River Highlights of Fiscal Year 2014 Annual Accomplishments

John Blake, Assistant Manager Research
March 24, 2015

Operating under Interagency Agreement Number DE-A109-00SR22188



Savannah River Site

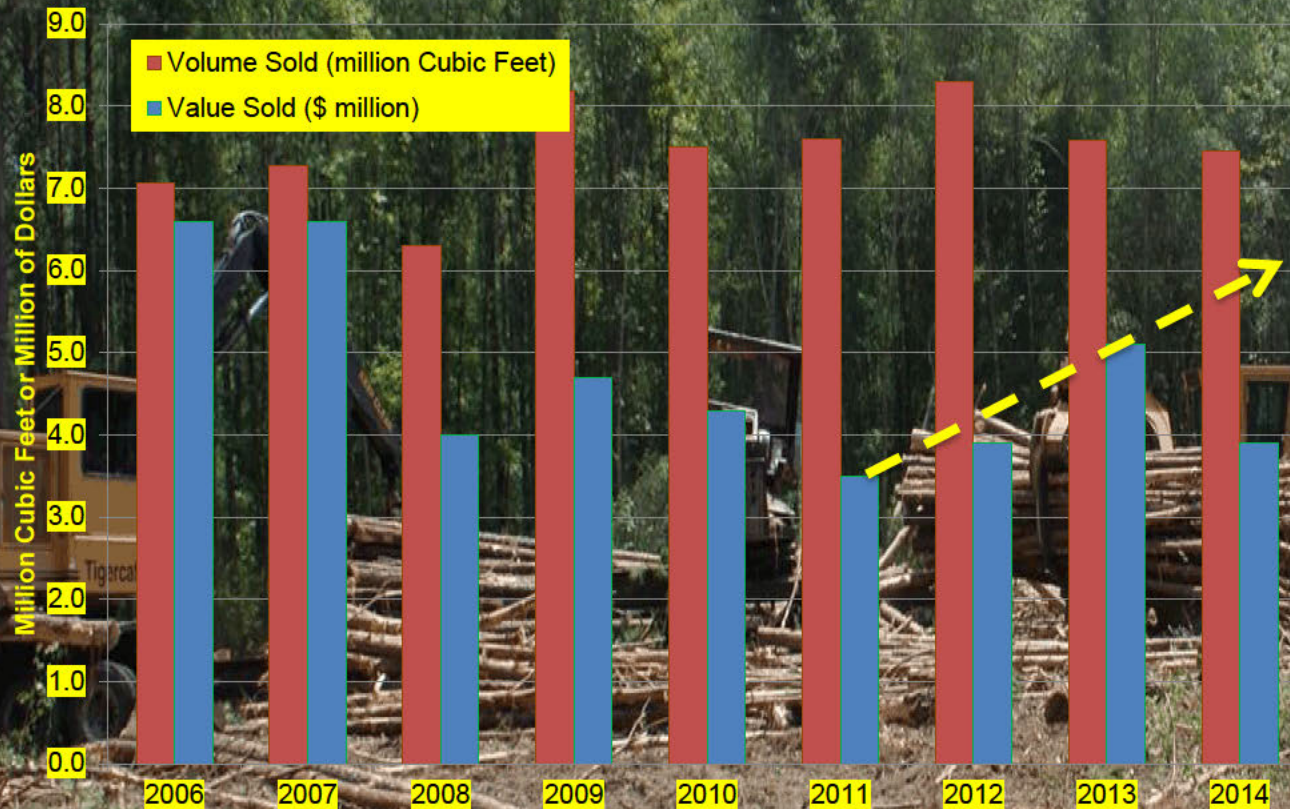
Purpose

- To satisfy a Strategic & Legacy Management Committee 2015 Work Plan topic

Ice Storm Damage



Volume and Value of Forest Products



Forest Inventory Research

- Snag occurrence modeling for cavity nesting species
- Understory vegetation cover habitat mapping
- Developed new method for modeling growth

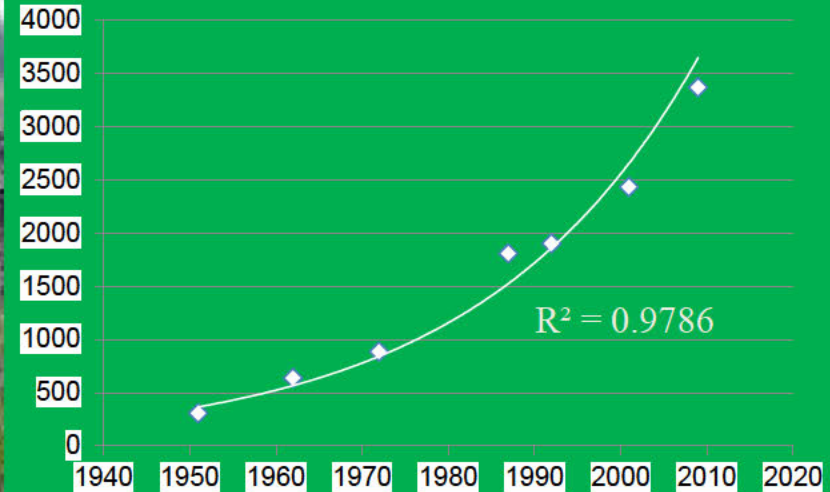
Reforestation

880 acres of planting was completed including 865 acres of pine and 15 acres of hardwood (oaks)

Hardwood Planting

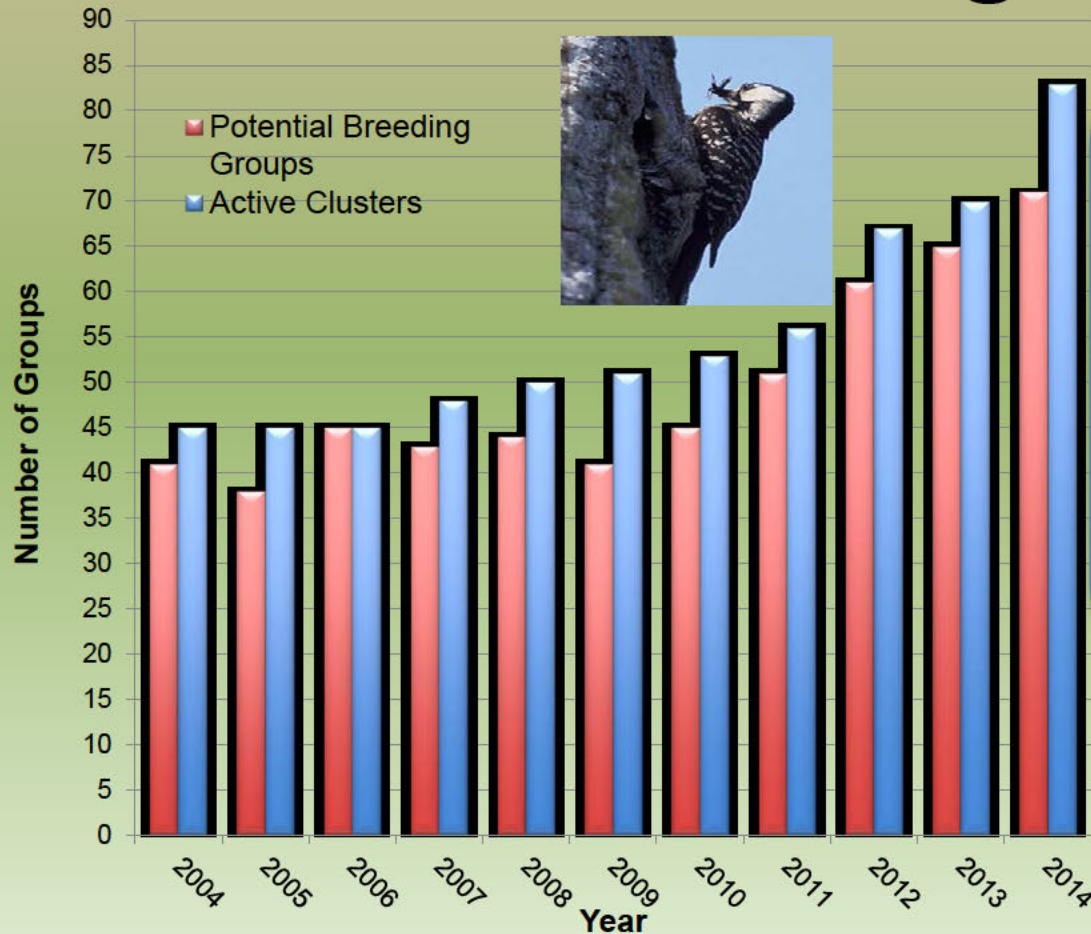


SRS Average Stand Volume
(cubic feet/acre)



About 46% of the biomass are hardwoods and 54% are pines. (based on Light Detection and Ranging [LiDAR])

Red-Cockaded Woodpecker Clusters and Breeding Groups



Red-Cockaded Woodpecker Research

- Assess forage habitat and reproduction over a range of cluster densities to determine acres required for forage habitat to achieve 250 breeding groups

Threatened, Endangered and Sensitive Species Surveys



- Plants (42 State sensitive, two endangered)
- Amphibians and reptiles (seven State sensitive)
- 87 fish species (one State sensitive, one endangered)
- 54 species of mammals (four State sensitive)
- 259 species of birds (eight State sensitive, two endangered)
- A lot of invertebrates and insects (nine State sensitive)

- Completed about 10,000 acres of forest land plant surveys prior to harvesting or other treatments
- A new population of endangered smooth purple coneflower was found
- Golden eagles were first observed foraging on SRS

Native Fire Savanna Restoration

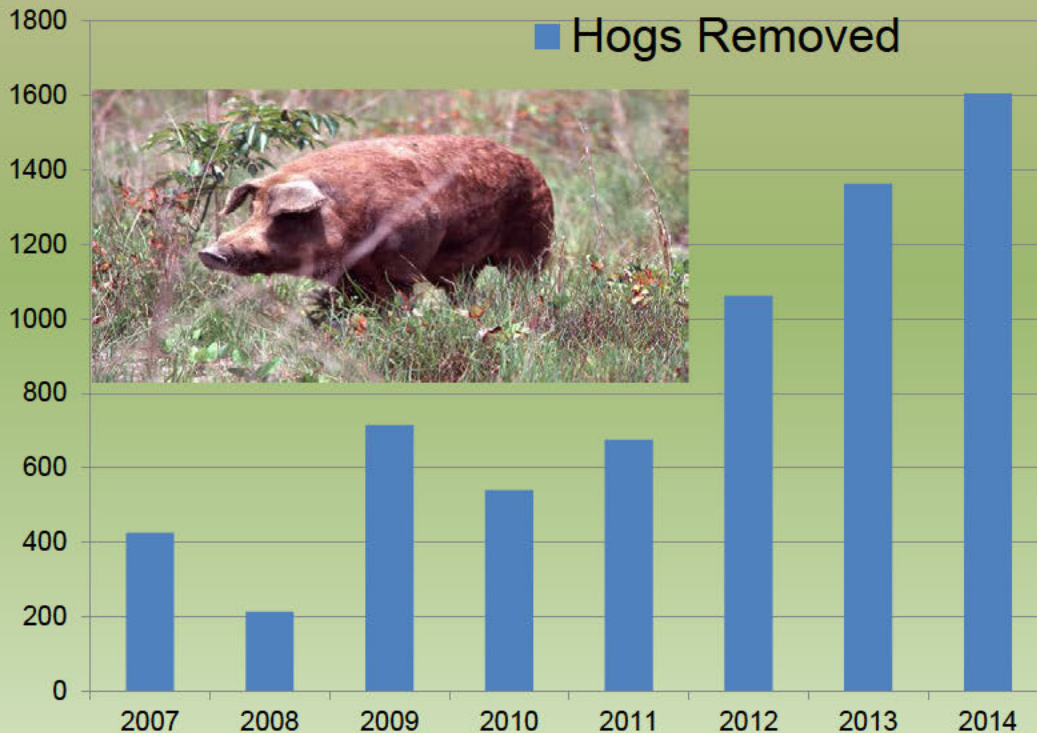
Goal: Restore native plants, native pollinators and associate habitat for vertebrates. No annual targets. Most work is accomplished in conjunction with red-cockaded woodpecker treatments

Savanna Restoration Research

- Effects of overstory longleaf pine stocking on understory plants
- Establishment of native plants on old-field forest stands
- Recovery and dispersal of native plants and pollinators in remnants



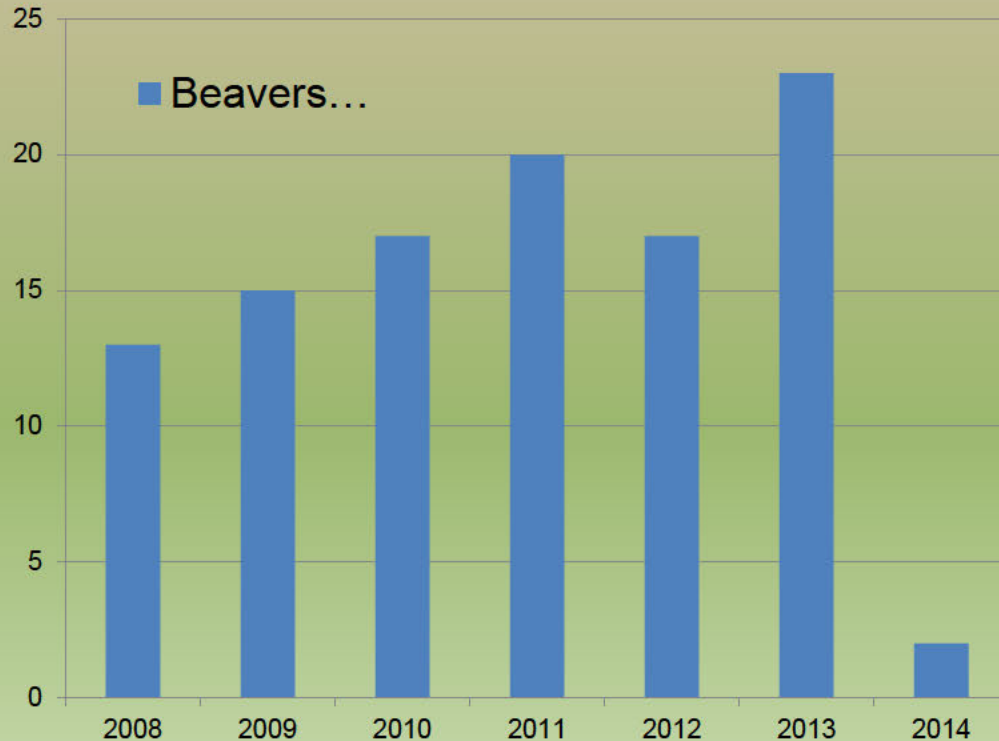
Feral Hogs Removed



Hog Research

- Track female sounder hog movements to determine from behavior if we can extirpate hogs locally for extended time
- Determine if leaving hog carcasses in the woods is enhancing coyote populations (cost factor)
- Cooperating with SREL on USDA funded hog control studies

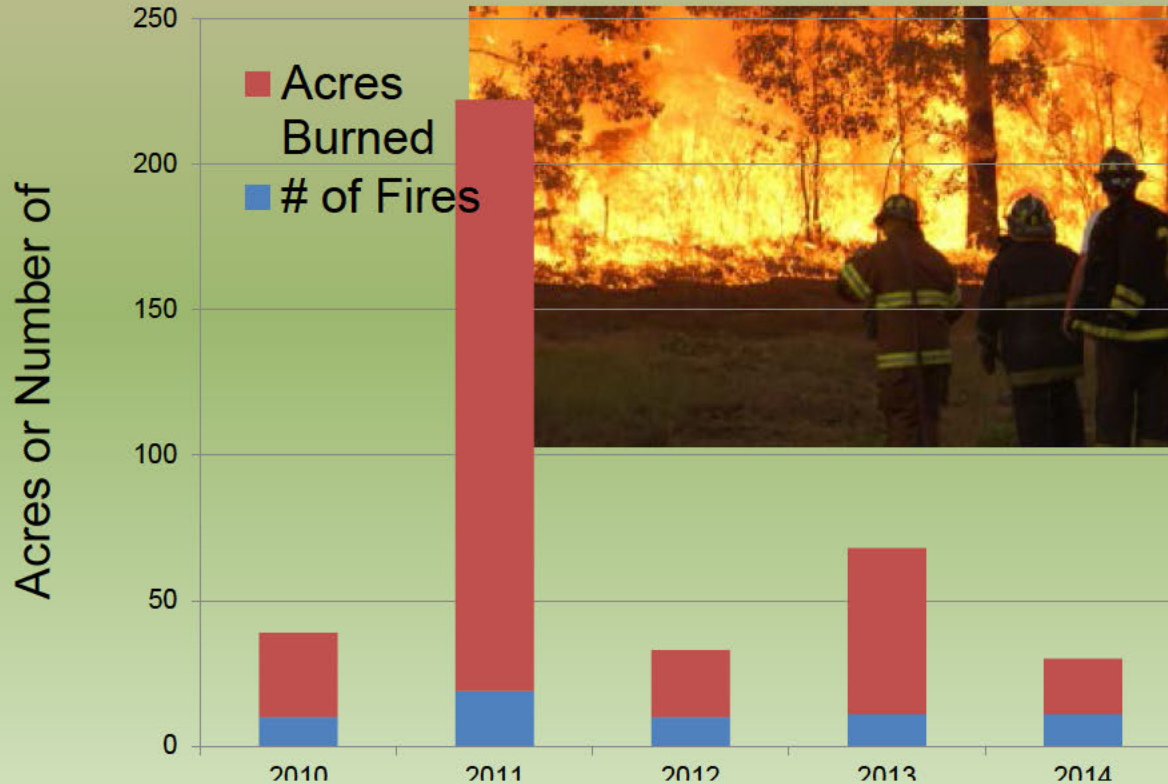
Beavers Removed



Installation of beaver excluder devices were started in 2014. They reduced the need to trap beavers while minimizing damage to site infrastructure.



Wildfires and Acres Burned



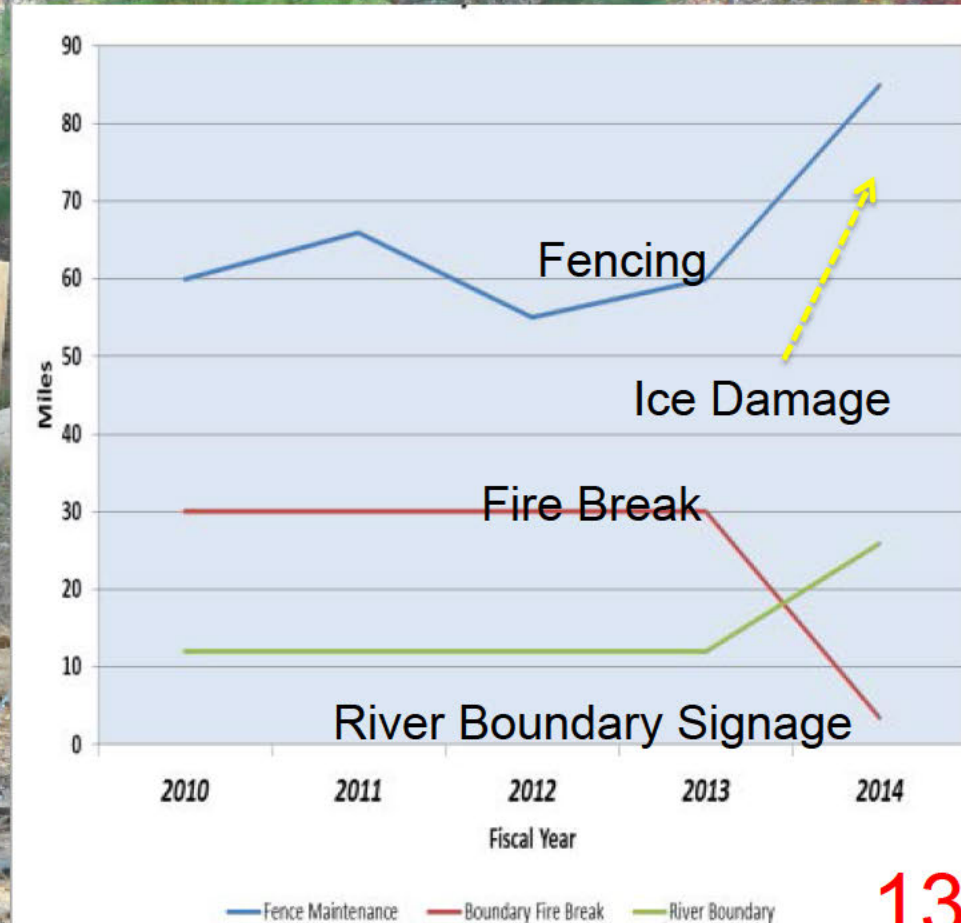
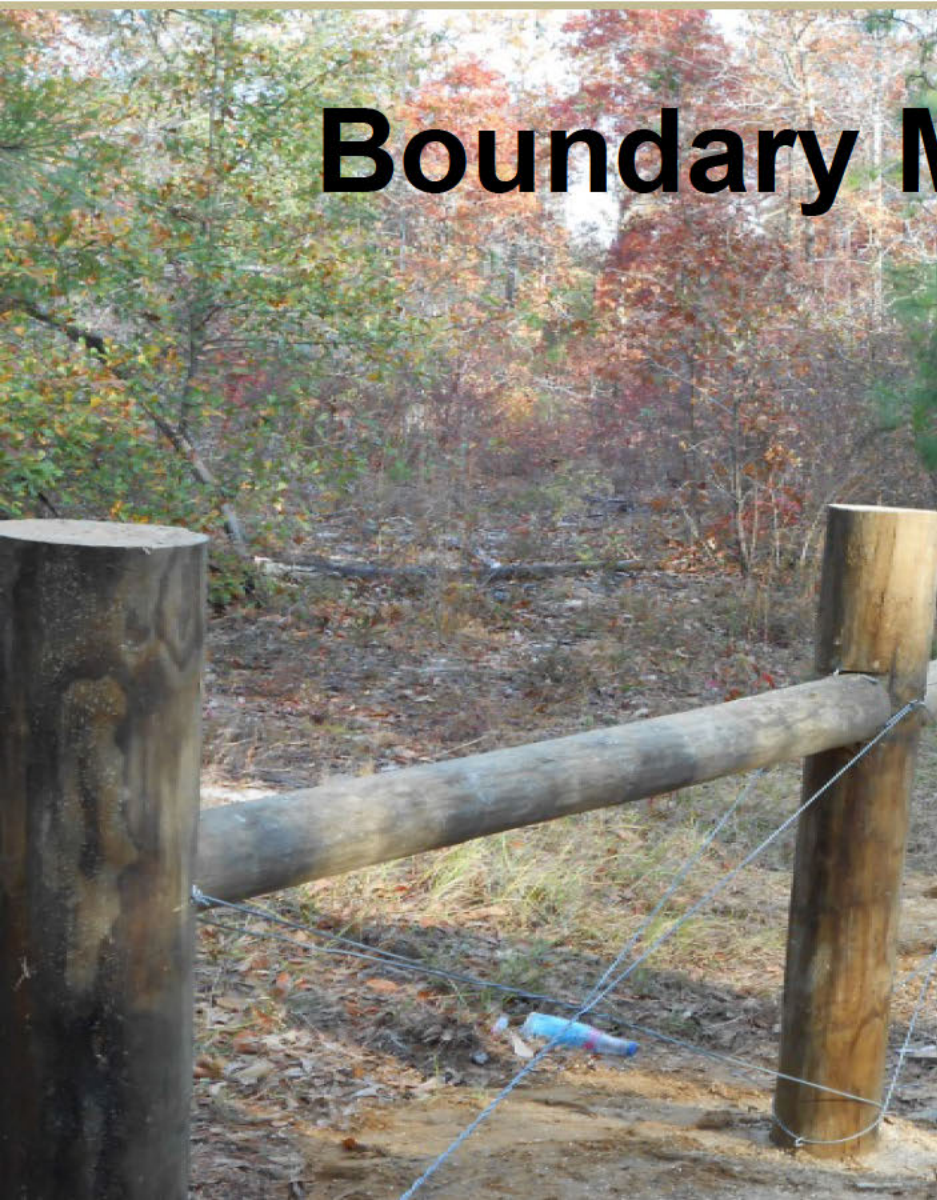
Hazardous Fuels Research

- Completed spatial analysis and mapping of hazardous fuel quantities and fire behavior under extreme weather conditions
- Cooperating with SRNL on climate change impacts

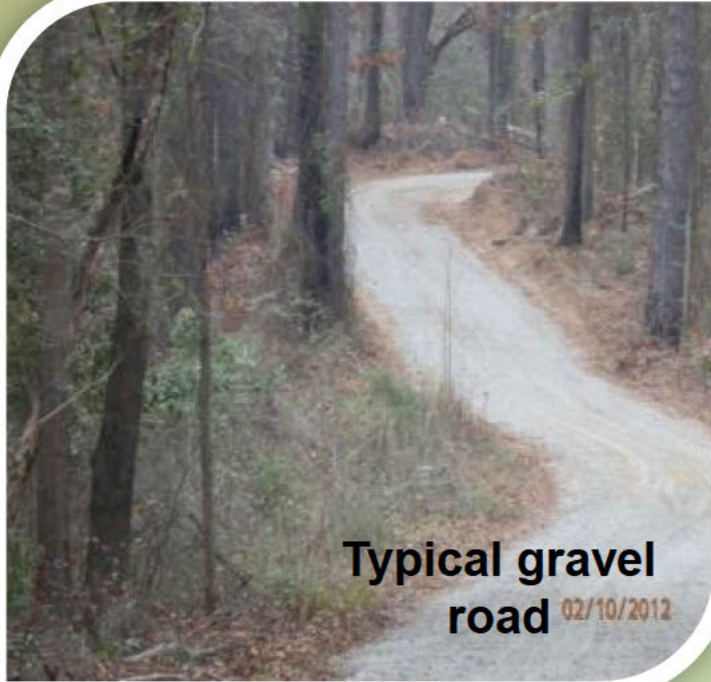
Prescribed Fire Acres Burned



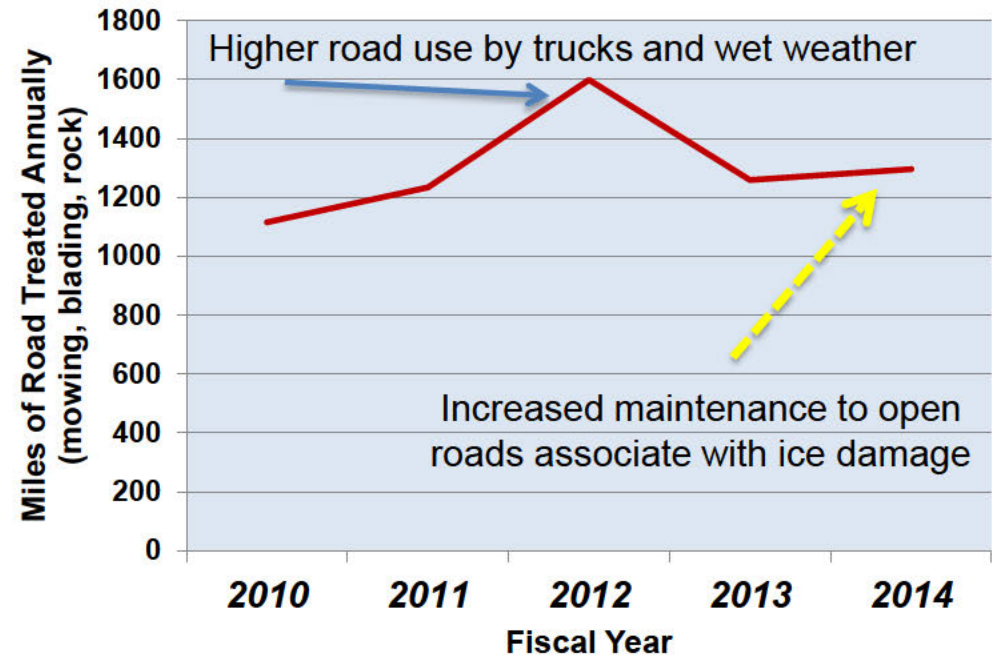
Boundary Maintenance



Road System Management

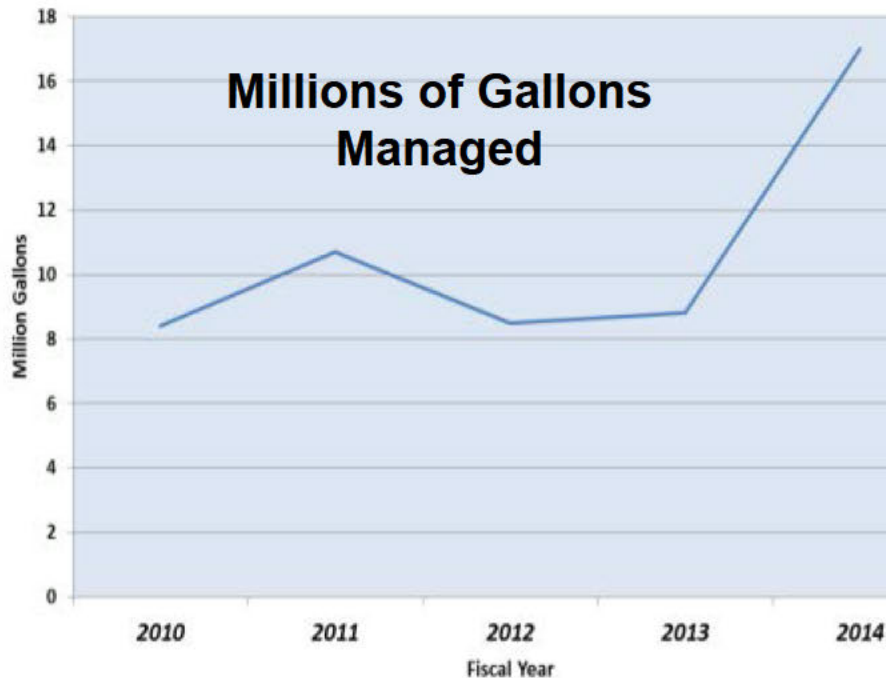


Road Maintenance



Mixed Waste Management Facility Tritium Phytoremediation

**Millions of Gallons
Managed**

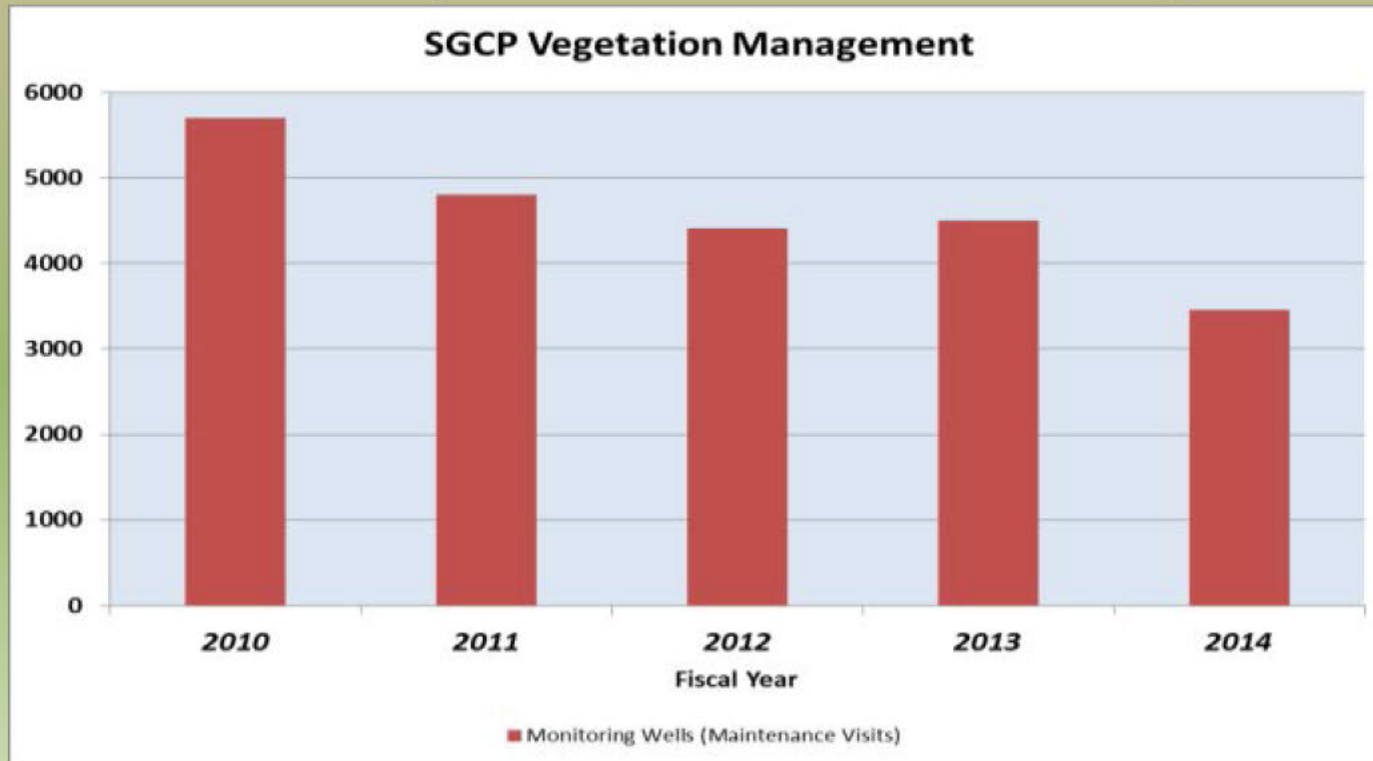


MWMF Western Expansion

- Two additional expansion areas have increased the capacity of the system to manage the tritium in the seepage to Fourmile and reduce the discharge to Savannah River.

Soil & Groundwater Closure Program

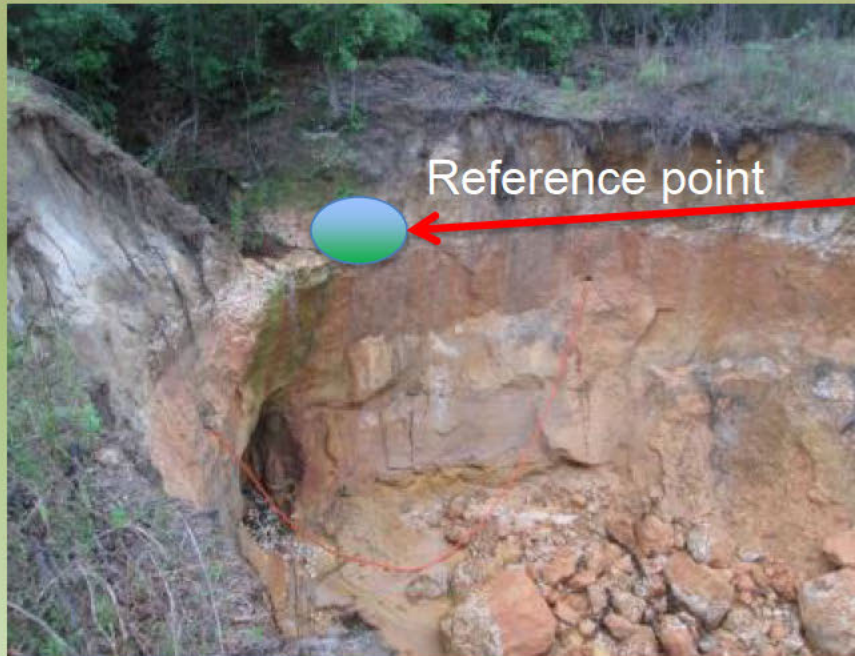
Acres of Cap and Well Management



We perform routine vegetation maintenance (mowing, fertilizer, pesticides), repair erosion and do animal control on ~586 ac of caps per year.

Special Project: Erosion Control at F-02 Outfall

Before

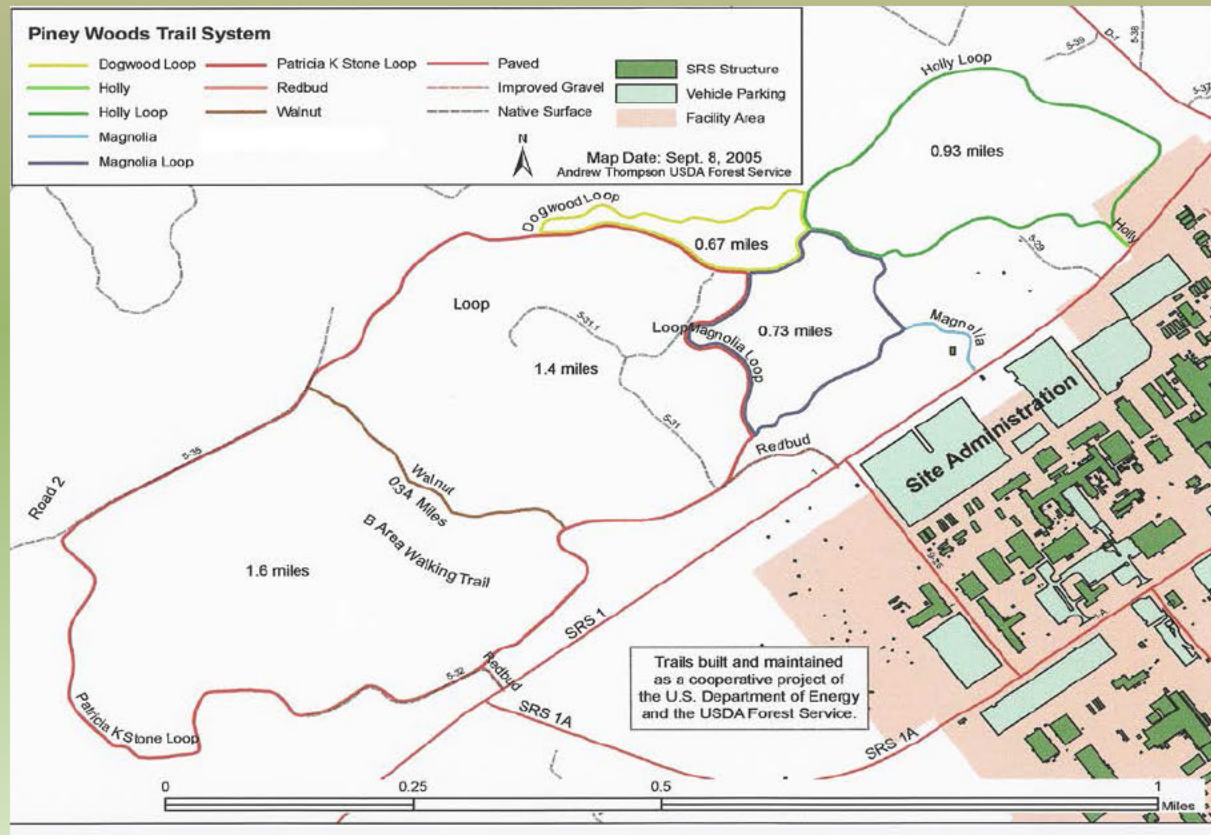


After



Trail Maintenance

- We typically maintain 11 miles of walking trails. This year two major trail systems (A-area and S-area) are still blocked due to ice storm, totaling 7.6 miles.



Community Outreach Programs

Fire Prevention Education



Savannah River Environmental Science Field Station



SRS Ultimate Fishing Challenge for Wounded Warriors and other anglers with mobility impairments.



Disability Turkey Hunt

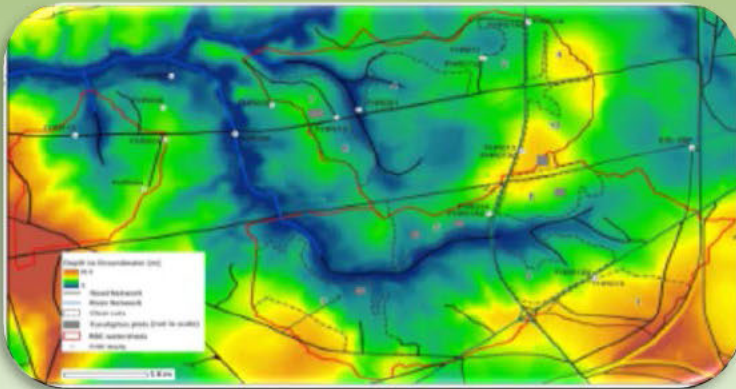


Externally Funded Research

Nation Science Foundation: Corridor Study in Savannas



DOE Renewable Energy: Water Quality & Use of Bioenergy Crops



Questions?

