

2012 MAPS

Figure		Page
Figure 1.	The Savannah River Site and Surrounding Area	2
Figure 2.	Radiological Surface Water Sampling Locations	3
Figure 3.	NPDES Industrial Wastewater Outfall Sampling Locations	4
Figure 4.	NPDES Industrial Stormwater Outfall Sampling Locations	5
Figure 5.	Radiological Air Surveillance Locations	6
Figure 6.	SRS Thermoluminescent Dosimeter (TLD) Sampling Locations	7
Figure 7.	Fish Sampling Locations	8
Figure 8.	Radiological Soil Sampling Locations	9
Figure 9.	Radiological Sediment Sampling Locations	10
Figure 10.	Radiological Vegetation Sampling Locations	11
Figure 11.	Creek Plantation	12
Figure 12.	Creek Plantation Swamp Trails	13
Figure 13.	Nonradiological Surface Water Sampling Locations	14
Figure 14.	Domestic Water Systems	15
Figure 15.	Nonradiological Sediment Sampling Locations	16
Figure 16.	Sector-Specific Representative Person Air Pathway Doses (in mrem) for 2012	17

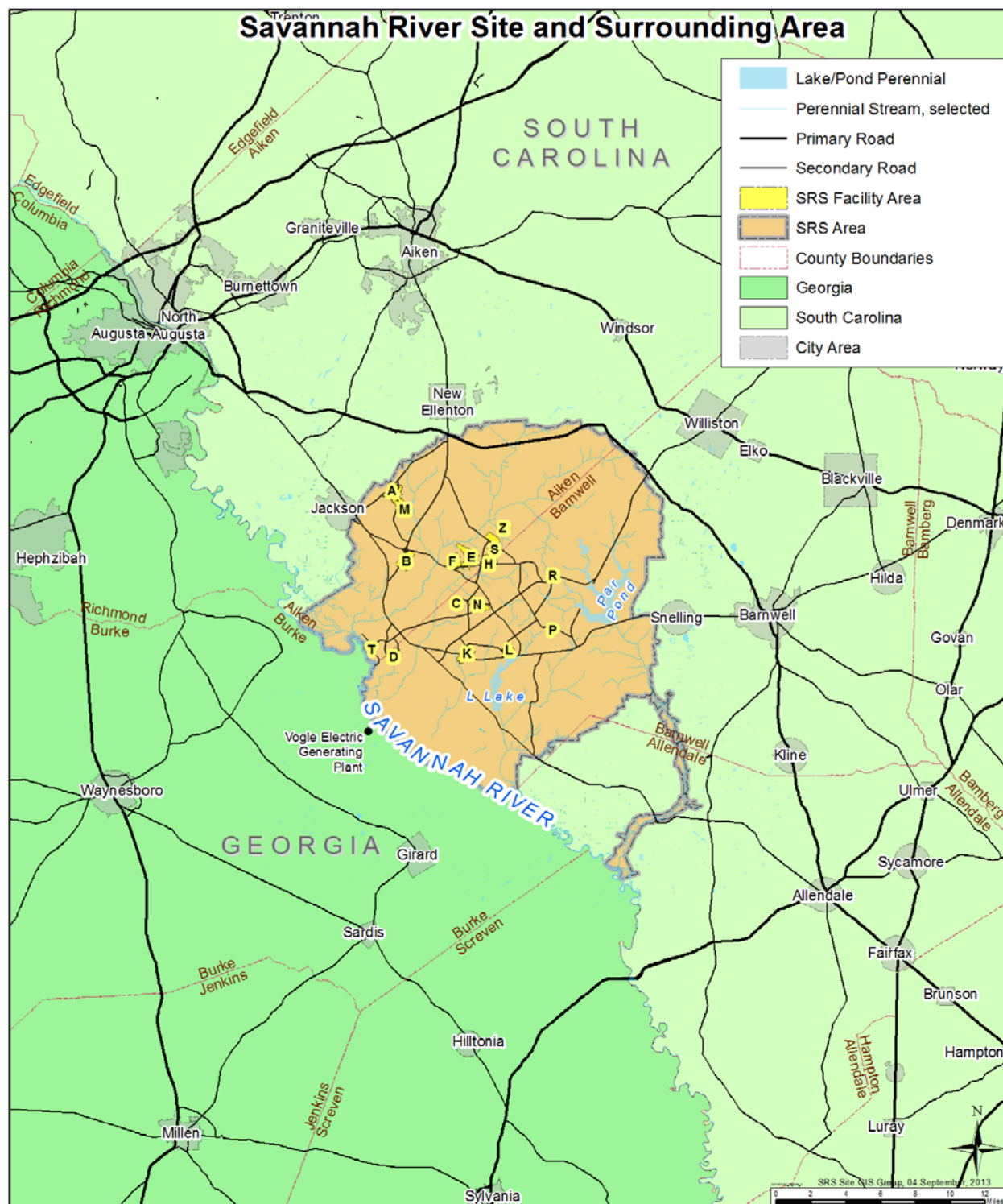


Figure 1. The Savannah River Site and Surrounding Area

SRS is located in South Carolina, about 12 miles south of Aiken, SC, and about 15 miles southeast of Augusta, GA. The Savannah River flows along a portion of the Site's southwestern border.

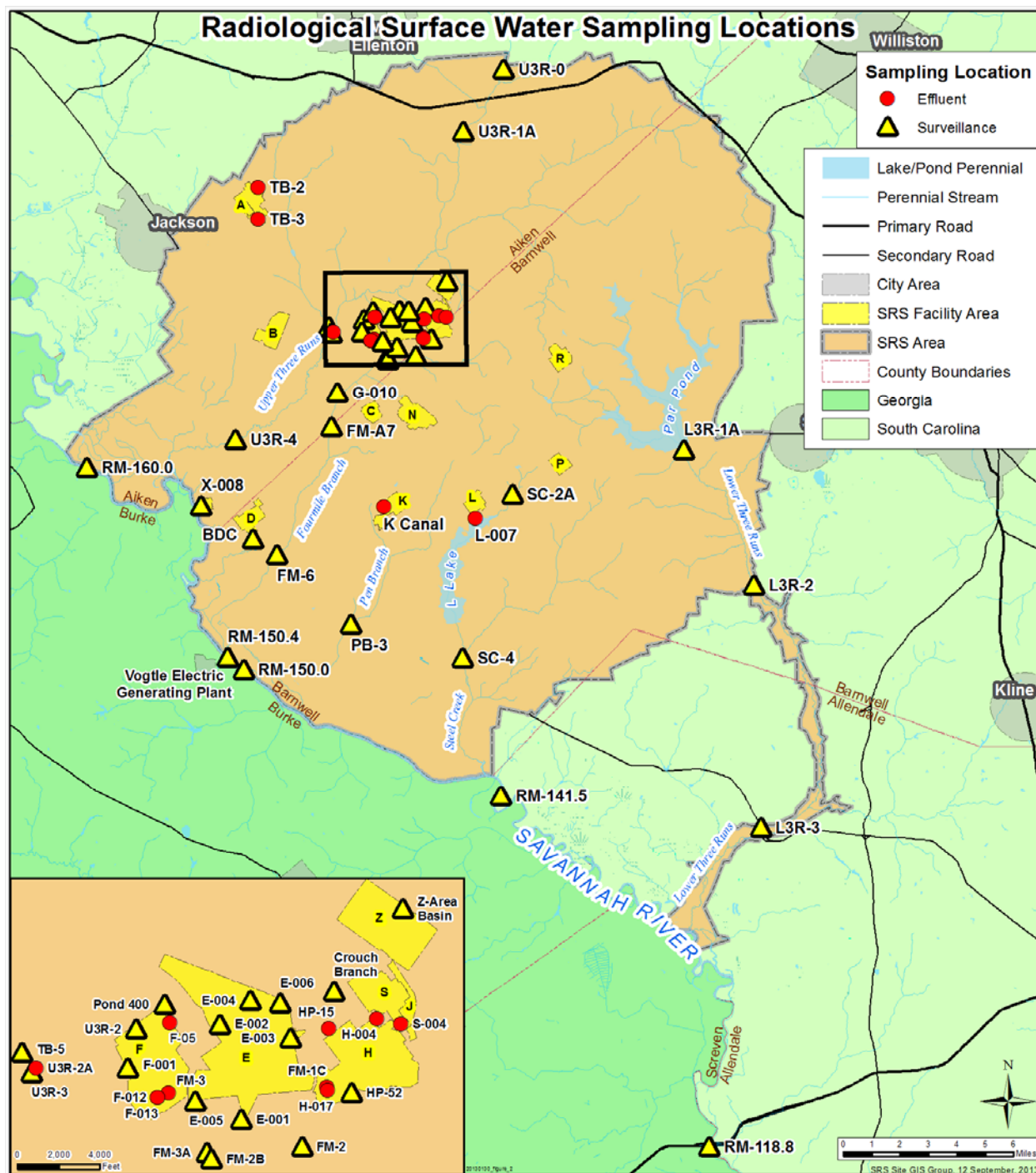


Figure 2. Radiological Surface Water Sampling Locations

Surveillance and effluent sampling points are near SRS facilities, onsite streams, and on the Savannah River.

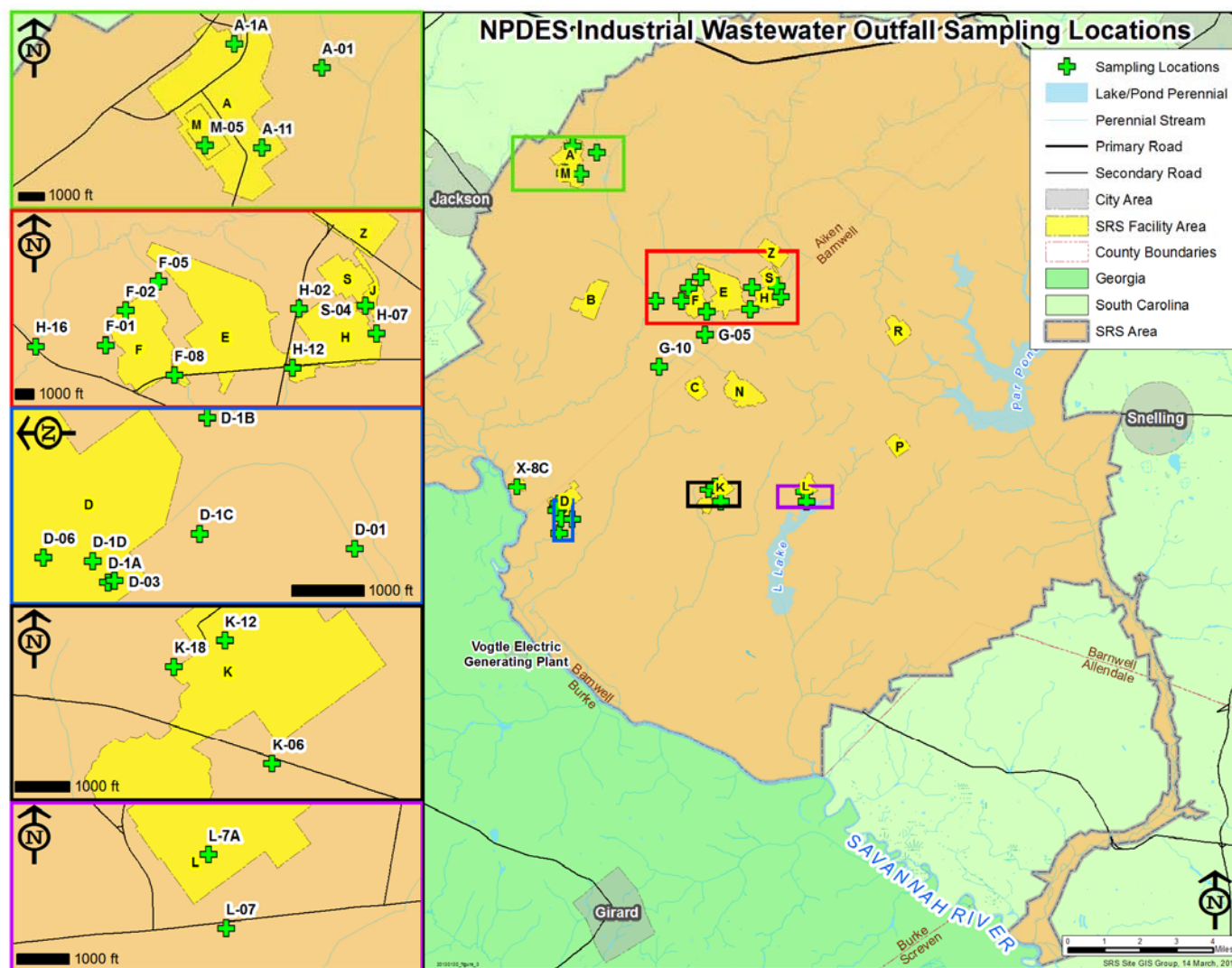


Figure 3. NPDES Industrial Wastewater Outfall Sampling Locations

Twenty-nine industrial wastewater outfalls were regulated at SRS in 2012 under NPDES Permits SC0000175, SC0047431, and SC0049107. Of the 29 outfalls, one (Outfall 002) appears in Permit SC0047431 but has never existed – and thus is not included on the map. The NPDES industrial wastewater discharge permit (Permit No. SC0049107) issued to Ameresco Federal Solutions, Inc. for discharges associated with the Biomass Cogeneration Facility (G-05) is independent of SRS's permits and is reported separately.

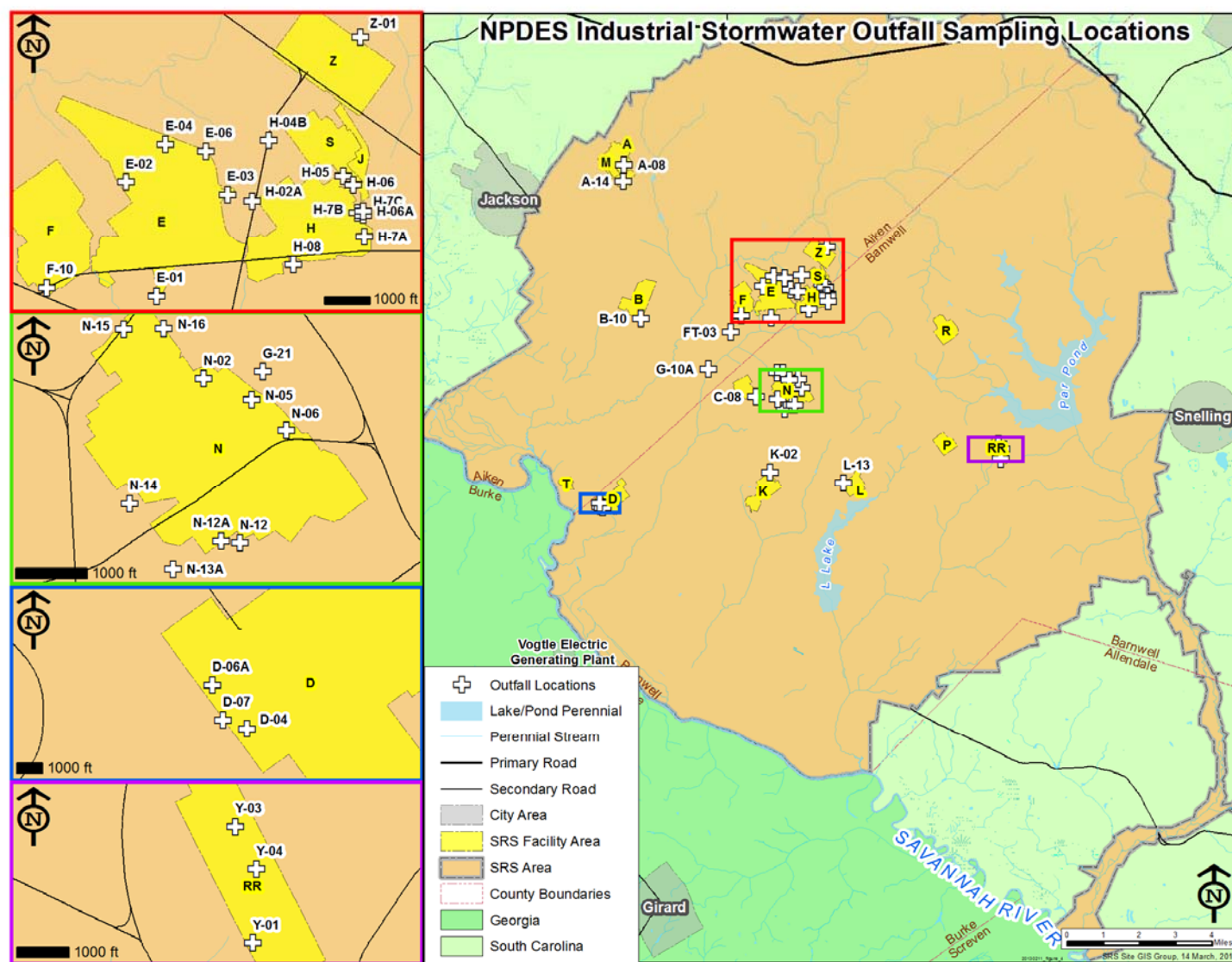


Figure 4. NPDES Industrial Stormwater Outfall Sampling Locations

Forty industrial stormwater outfalls were regulated at SRS in 2012 under Permit SCR000000, the NPDES General Permit for Stormwater Discharges associated with Industrial Activity (except construction activity).

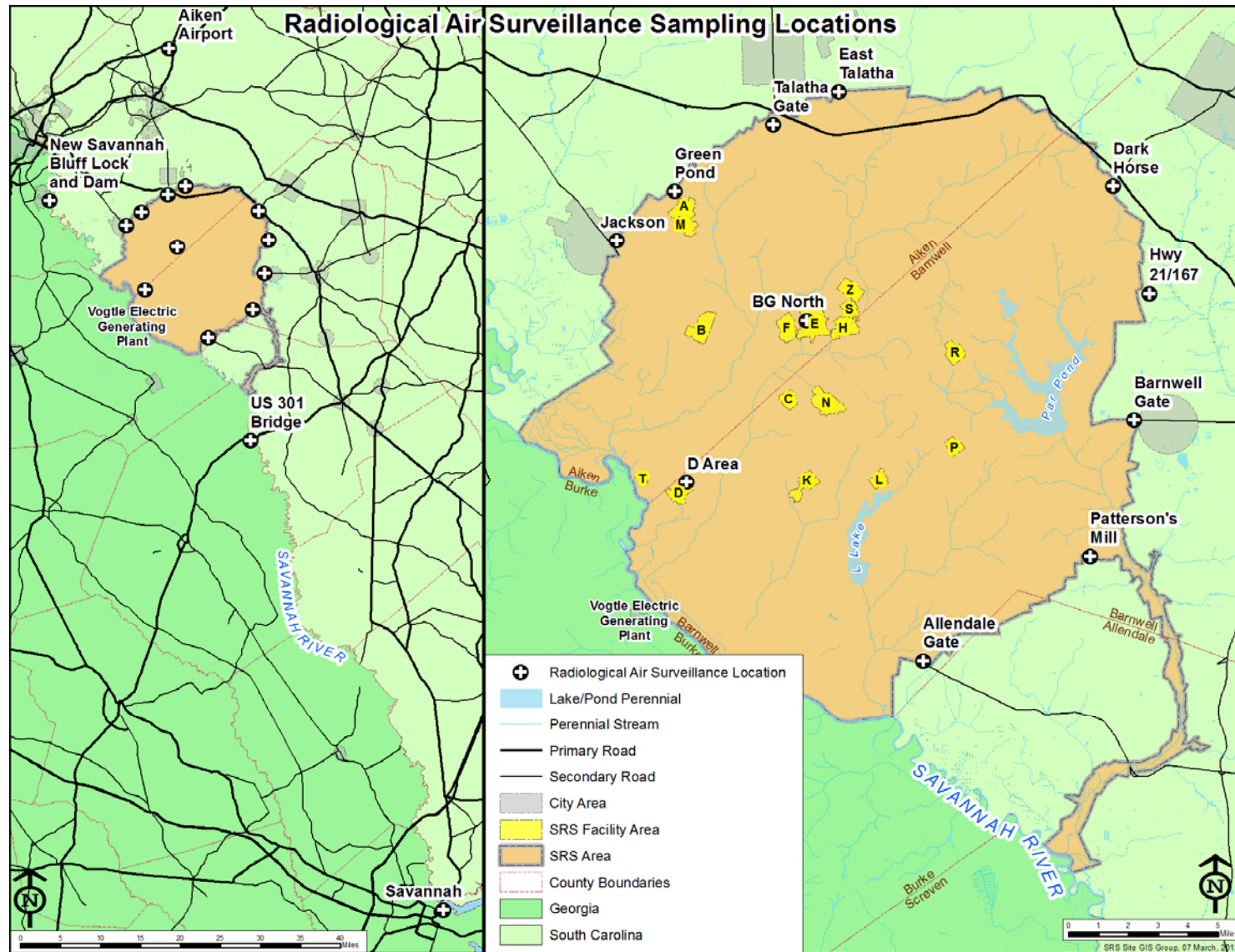


Figure 5. Radiological Air Surveillance Sampling Locations

The SRS air surveillance program consists of 11 stations located onsite or along the Site perimeter, as well as three stations approximately 25 miles from the Site perimeter (located near the U.S. Hwy 301 Bridge over the Savannah River, near the New Savannah Bluff Lock and Dam, also known as the Augusta Lock and Dam; and at the Aiken airport) and one about 100 miles from the Site perimeter (near Savannah, GA).

Ambient gamma radiation exposure is measured at SRS at the following locations: Plant Vogtle vicinity, population centers, air surveillance stations, and Site perimeter stations.

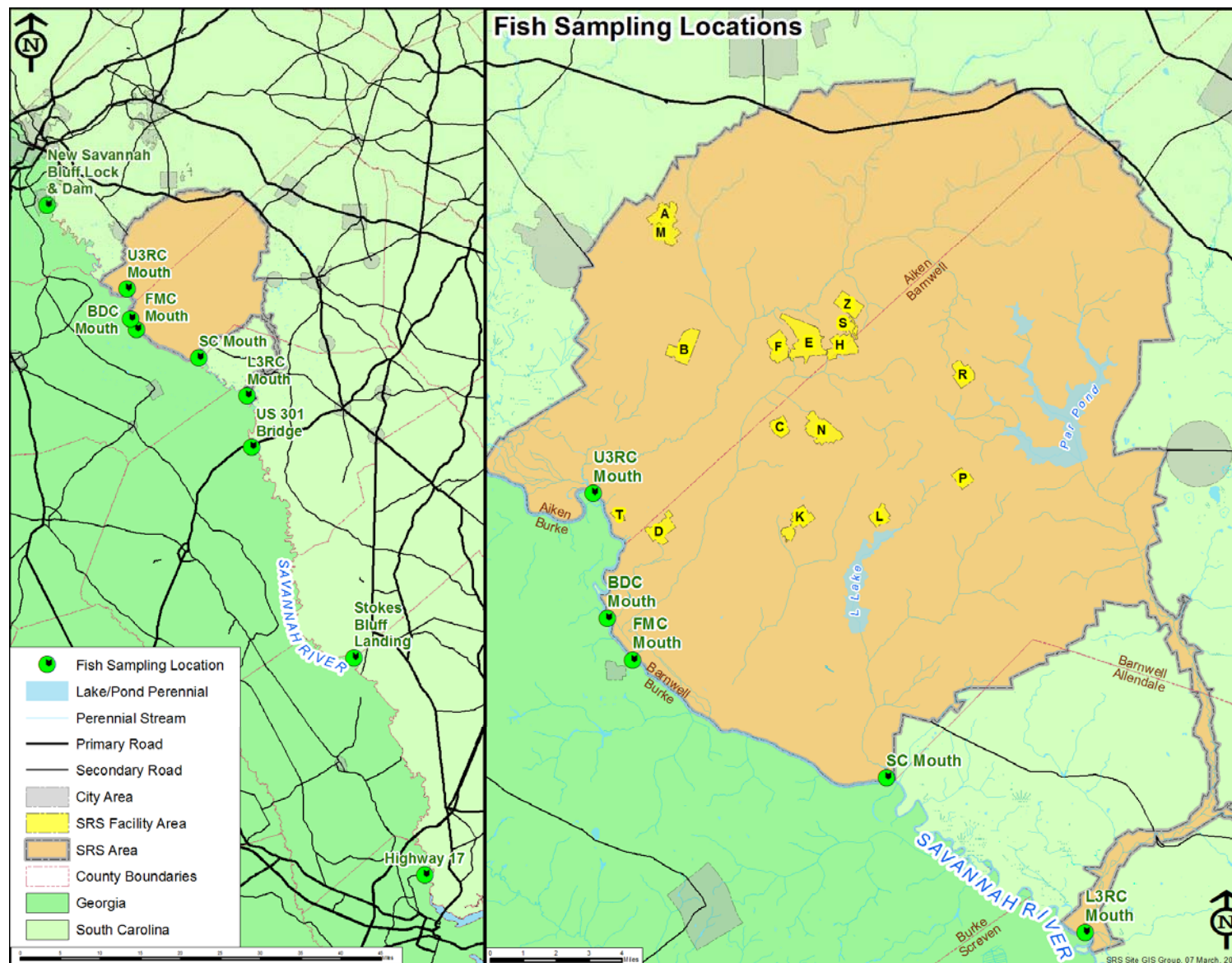


Figure 7. Fish Sampling Locations

SRS collects fish (for both radiological and nonradiological analyses) from the Savannah River above, adjacent to, and below the Site, as well as at Stokes Bluff Landing and near Savannah, GA. (Note: Samples are also collected from locations at West Bank Landing and the Edisto River that are not shown on the map.)

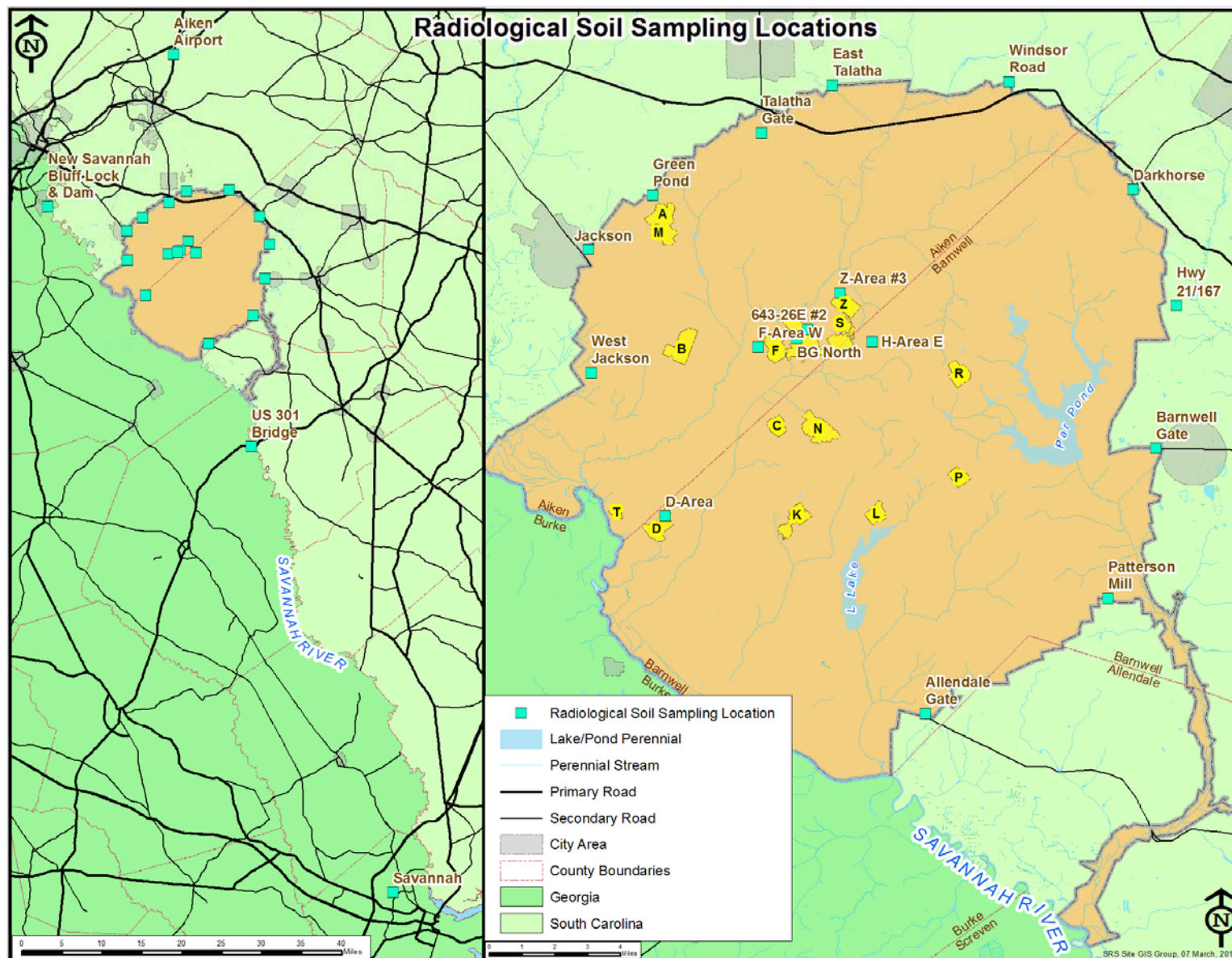


Figure 8. Radiological Soil Sampling Locations

SRS collected soil samples in 2012 from five onsite locations, 12 Site perimeter locations, and four offsite locations.

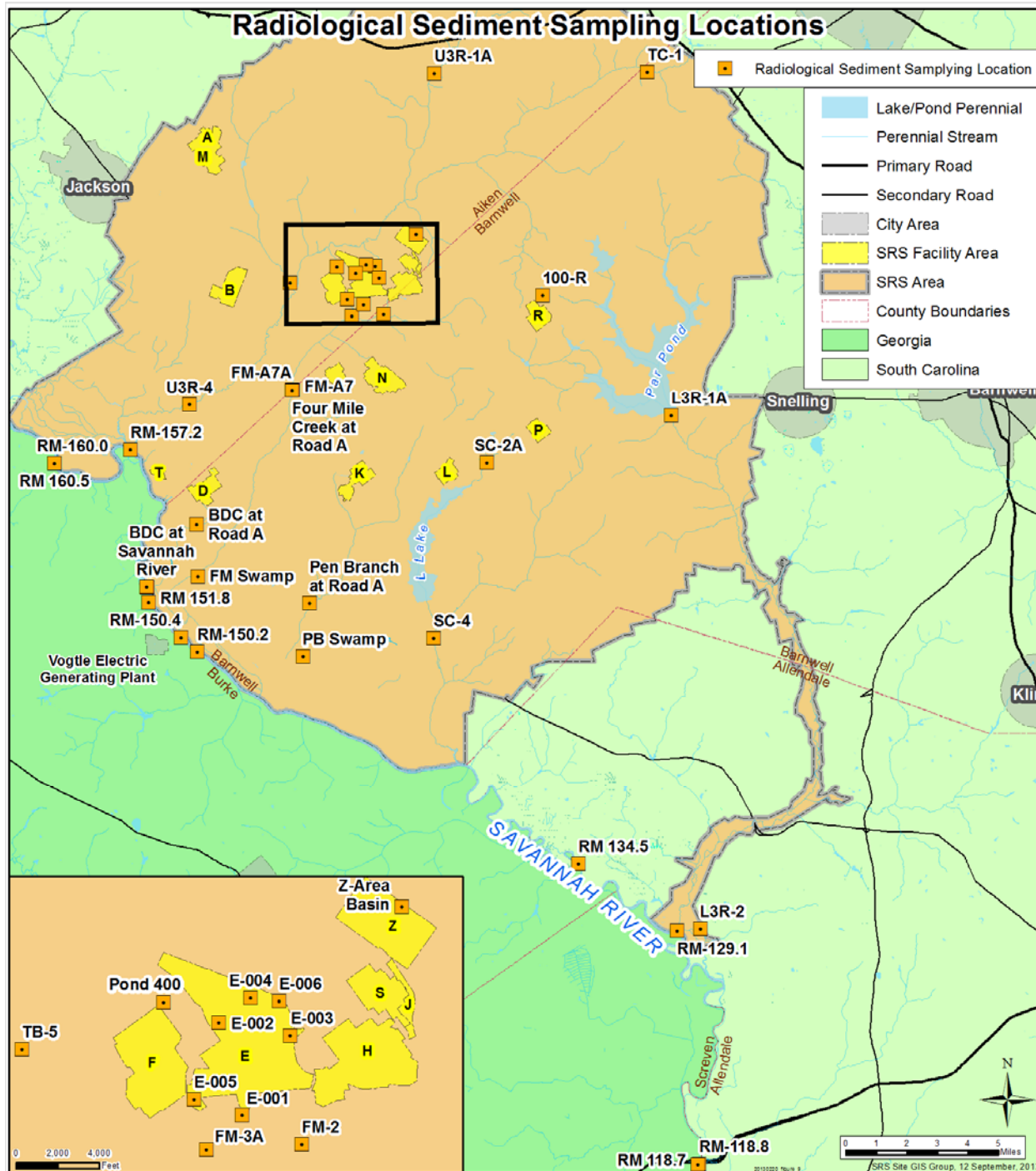


Figure 9. Radiological Sediment Sampling Locations

Sediment samples were collected in 2012 at eight Savannah River locations—upriver of, adjacent to, and downriver of the Site – and 19 onsite locations. (Note: Locations for special samples taken with SCDHEC are not shown on the map.)

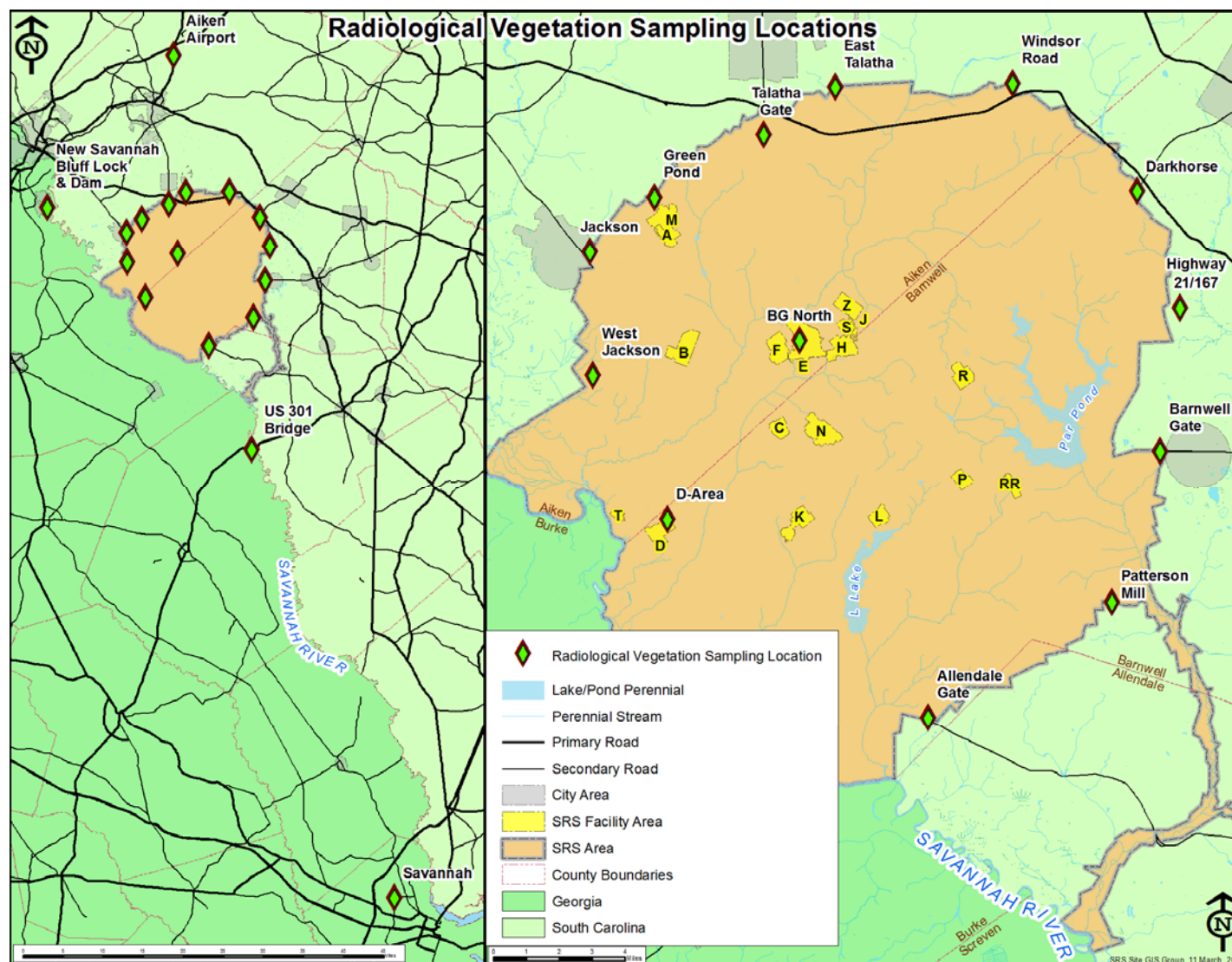


Figure 10. Radiological Vegetation Sampling Locations

Vegetation samples were collected for radiological analysis in 2012 from 13 locations onsite or along the Site perimeter, and from four offsite locations.

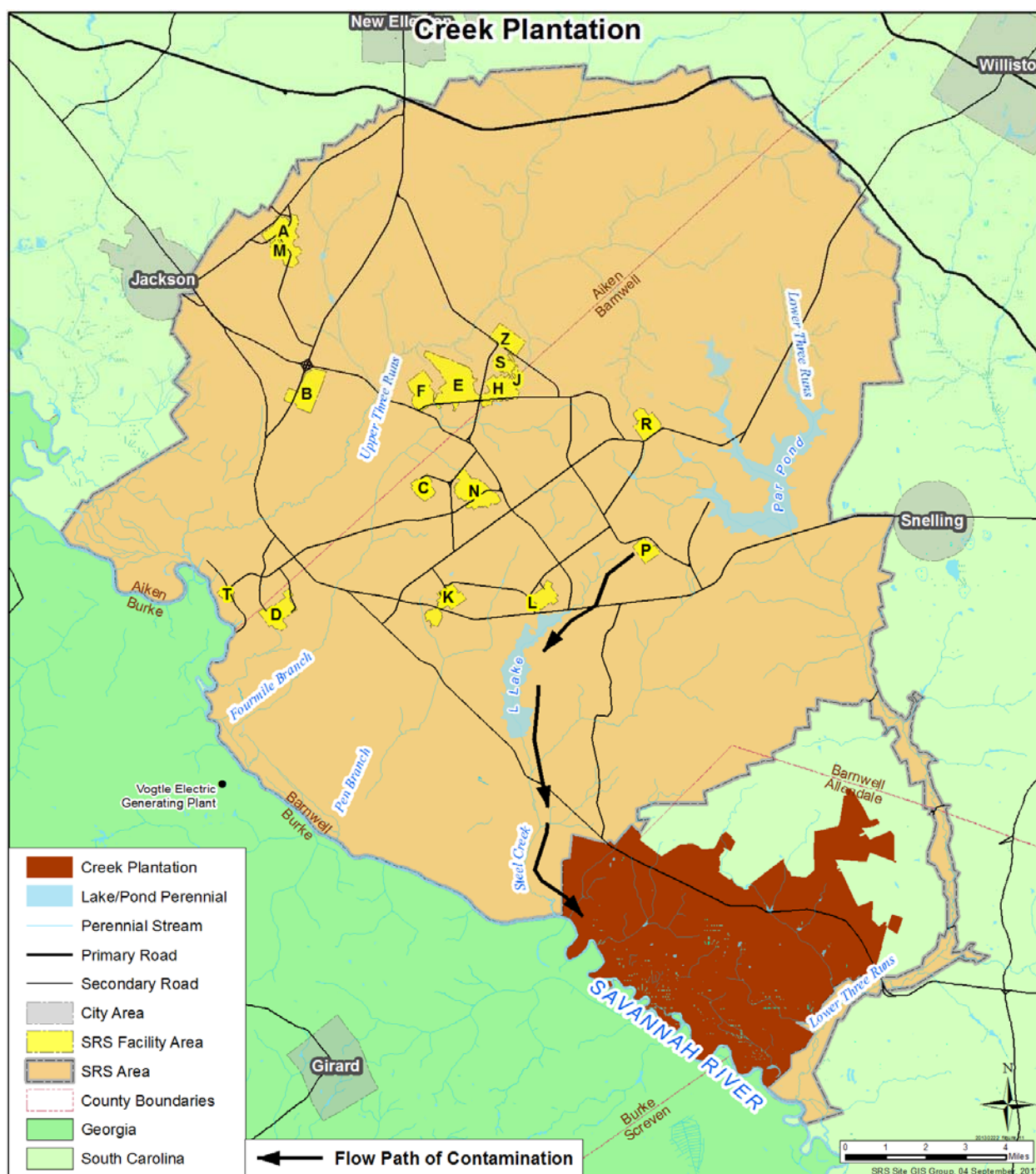


Figure 11. Creek Plantation

Radioactivity released from SRS operations contaminated the Savannah River Swamp between Steel Creek and Little Hell Landing—an area outside the SRS boundary – during the 1960s. Approximately 25 curies of cesium-137 and 1 curies of cobalt-60 were released from the P-Area Storage Basin to Steel Creek – L-Lake did not exist at the time of the release—and migrated downstream to a part of the swamp.

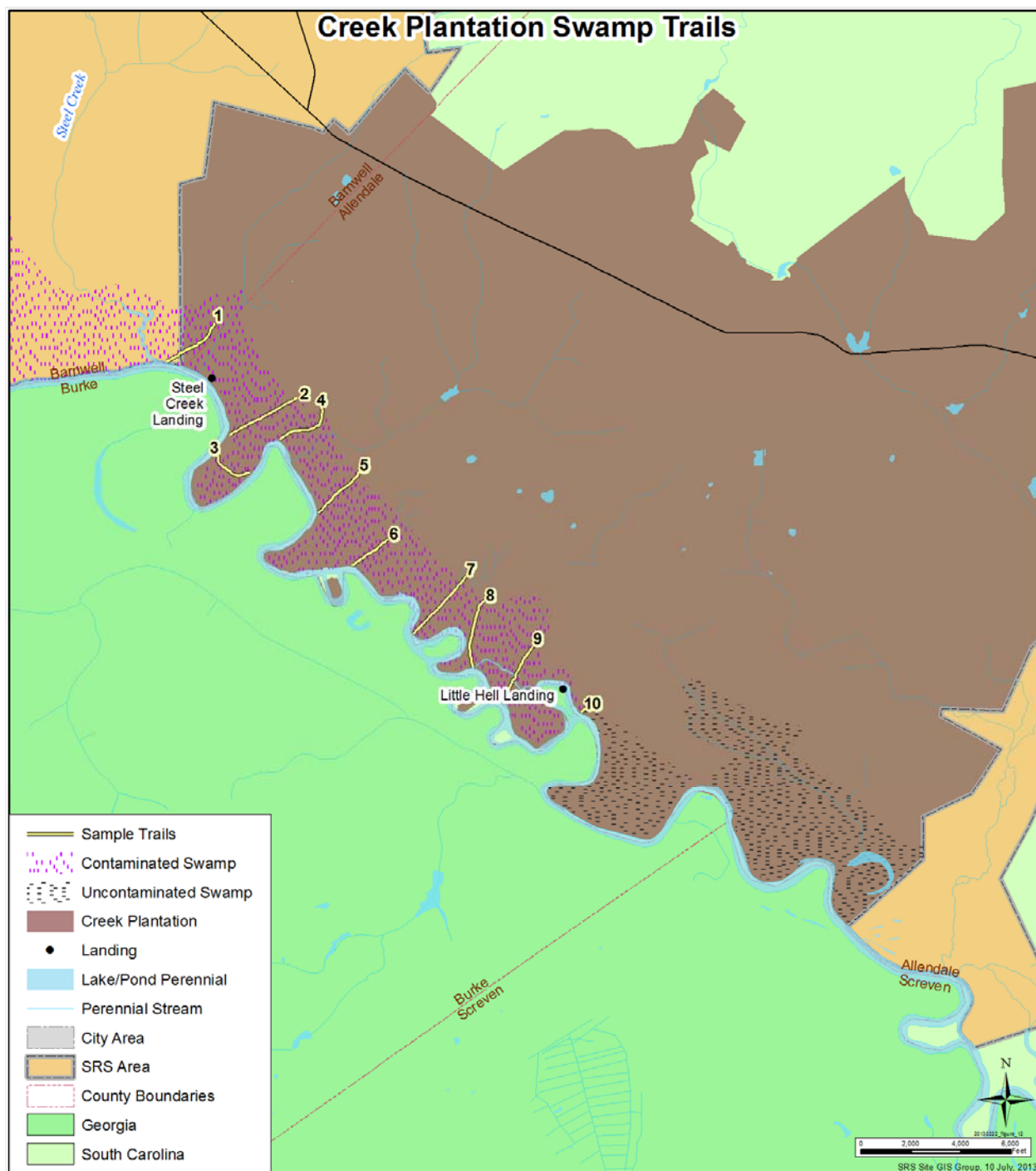


Figure 12. Creek Plantation Swamp Trails

Ten sampling trails were established in the Creek Plantation Swamp in 1974 so that surveys could be conducted on the movement of contamination from SRS operations.

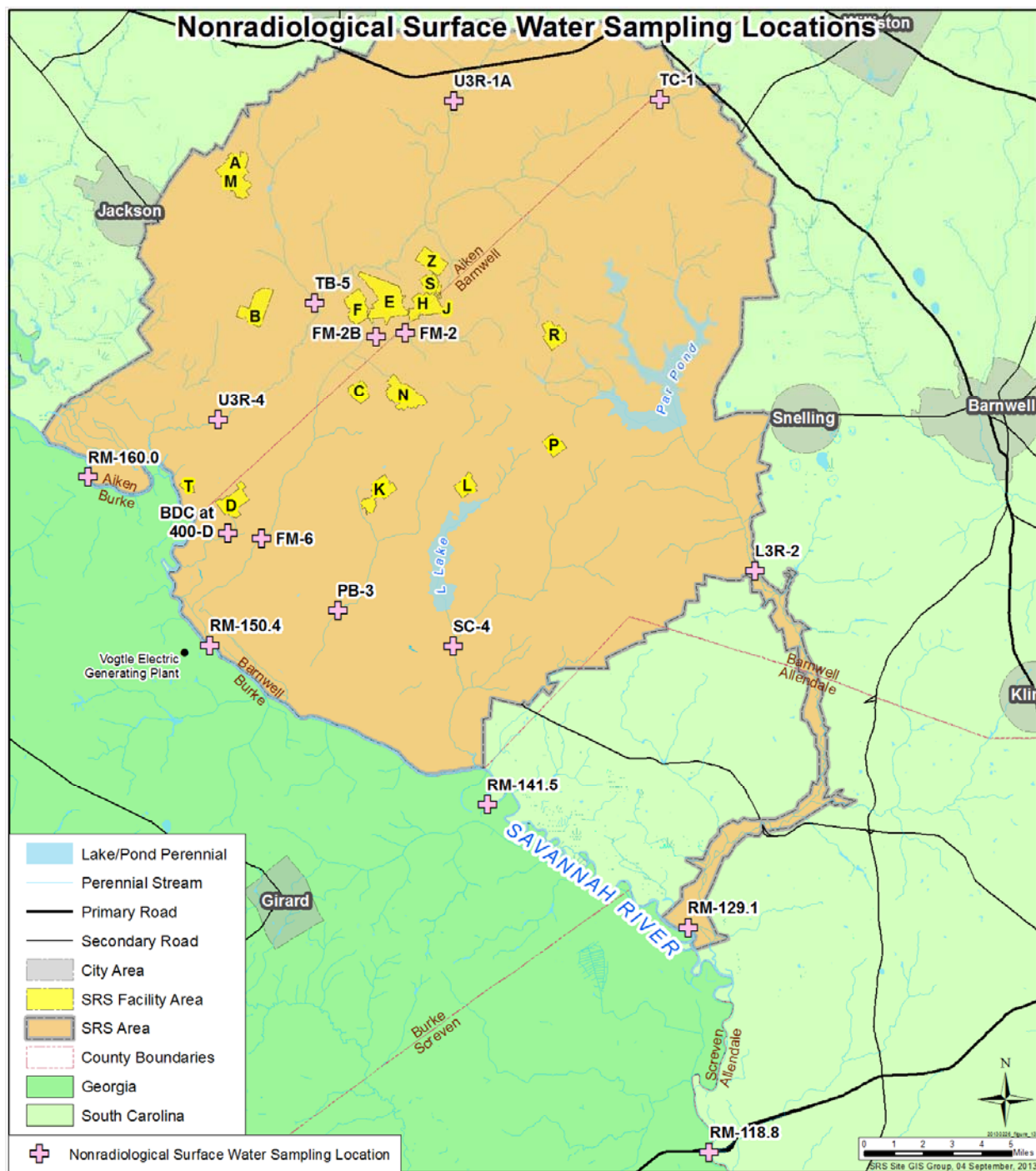


Figure 13. Nonradiological Surface Water Sampling Locations

Surface water samples are collected from five Savannah River and 11 SRS stream locations and are analyzed for various chemical and physical properties.

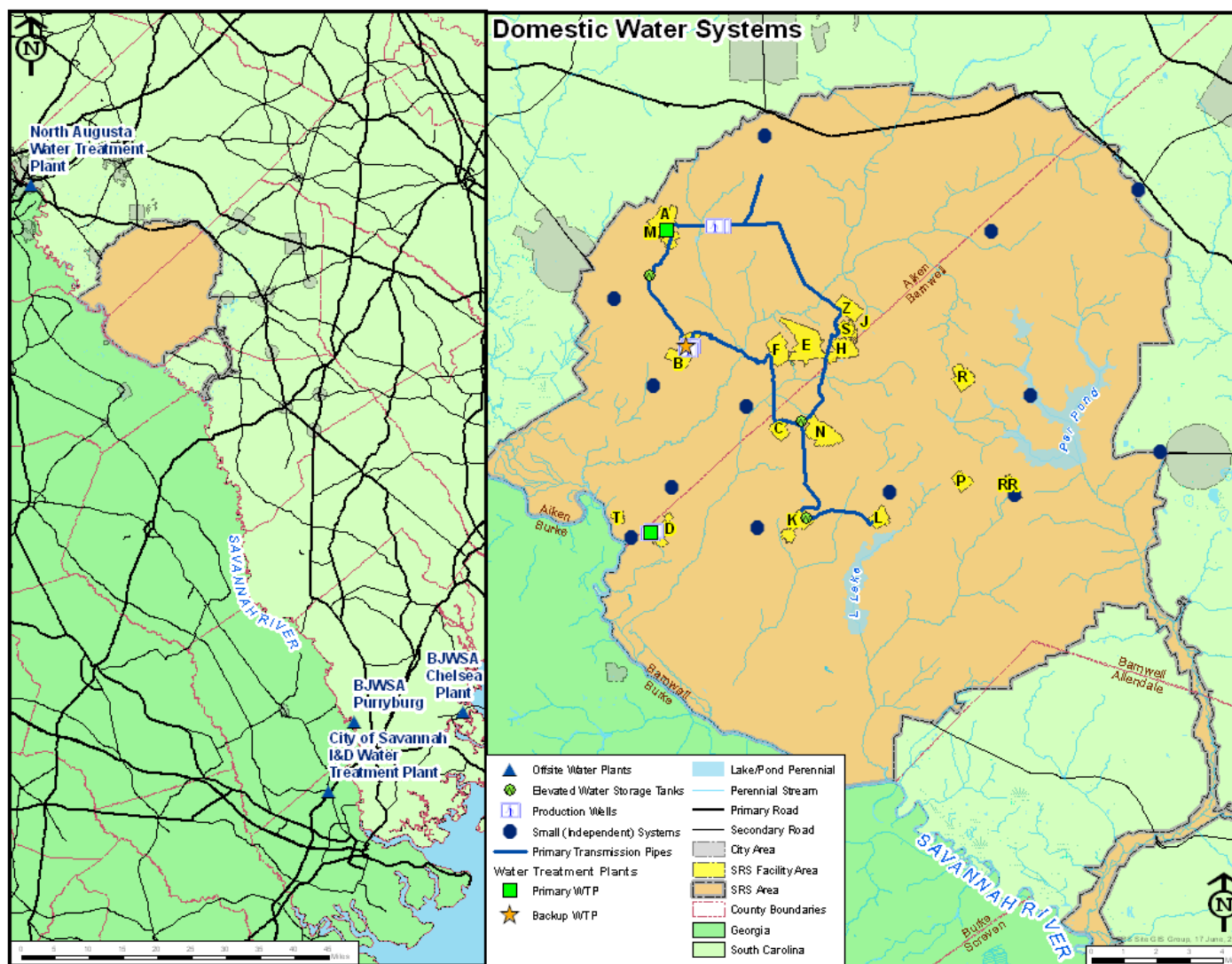


Figure 14. Domestic Water Systems

Most of the drinking water at SRS is supplied by three "large" systems, which require regulatory oversight and thus are sampled on a regular basis. The Site also has 14 "small" domestic water facilities, which serve populations of fewer than 25 persons, but only seven of the smaller systems (as shown on the map) require regulatory oversight and must be sampled. The three larger systems have transmission pipes, elevated storage tanks, water treatment plants, and a backup water treatment plant.

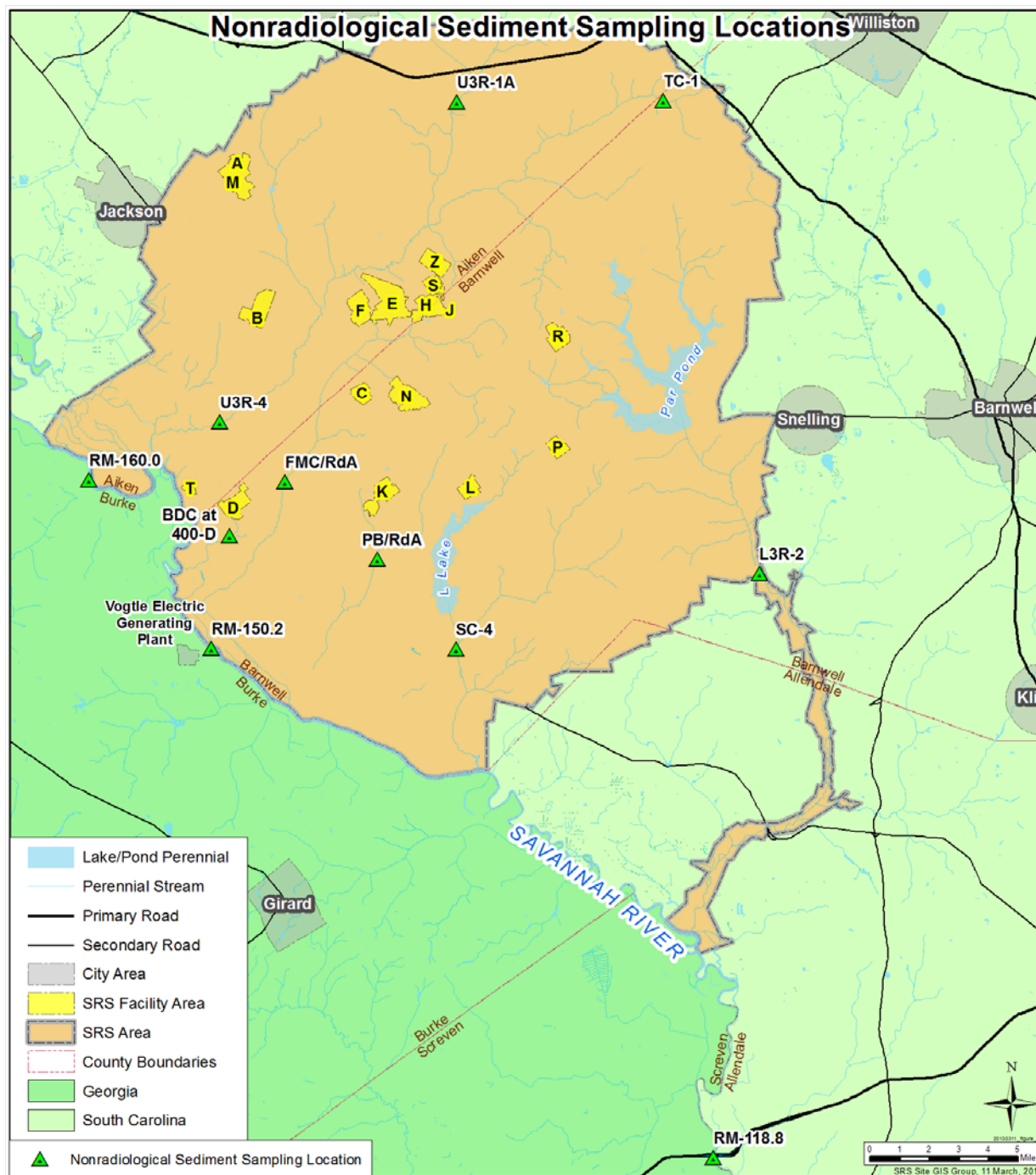


Figure 15. Nonradiological Sediment Sampling Locations

Sediment samples are collected at eight onsite stream locations and three Savannah River locations. The samples are analyzed for various inorganic contaminants (metals) and pesticides/herbicides. (Note: Locations for special samples taken with SCDHEC are not shown on the map.)

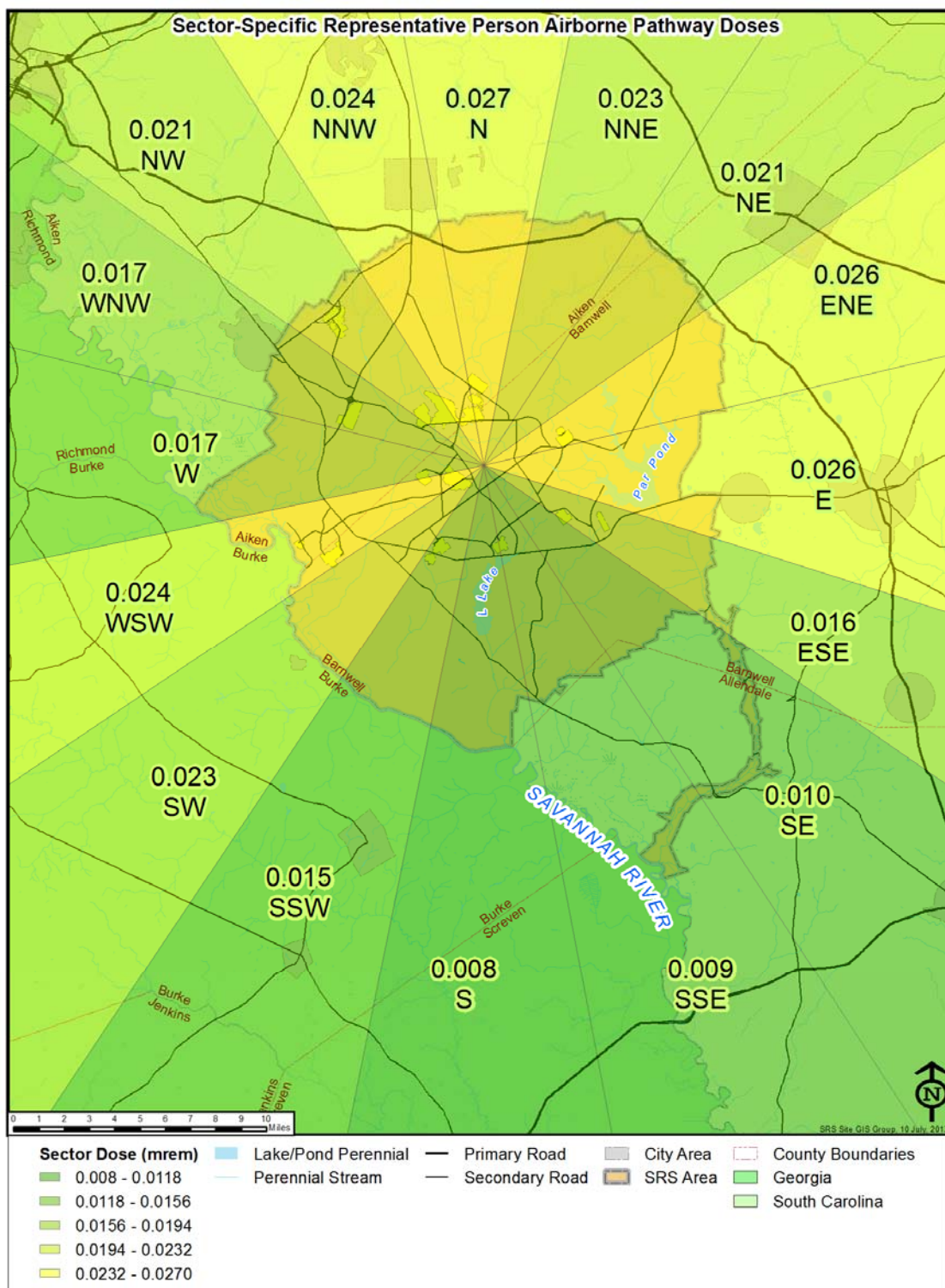


Figure 16. Sector-Specific Representative Person Air Pathway Doses (in mrem) for 2012

The representative person Site boundary doses from airborne releases are shown for each of the 16 major compass point directions surrounding SRS. In 2012, the N, NNE, ENE, E, WSW, and NNW sectors had essentially the same representative person dose of 0.03 mrem. However, when the third decimal point was considered, the N sector was slightly higher than the other sectors.