

2013 MAPS



Figure	Page
Figure 1. The Savannah River Site and Surrounding Area.....	2
Figure 2. Radiological Surface Water Sampling Locations.....	3
Figure 3. NPDES Industrial Wastewater Outfall Sampling Locations	4
Figure 4. NPDES Industrial Stormwater Outfall Sampling Locations	5
Figure 5. Radiological Air Surveillance Sampling Locations	6
Figure 6. SRS Thermoluminescent Dosimeter (TLD) Sampling Locations	7
Figure 7. Fish Sampling Locations	8
Figure 8. Radiological Soil Sampling Locations	9
Figure 9. Radiological Sediment Sampling Locations.....	10
Figure 10. Radiological Vegetation Sampling Locations	11
Figure 11. Nonradiological Surface Water Sampling Locations	12
Figure 12. Domestic Water Systems.....	13
Figure 13. Nonradiological Sediment Sampling Locations	14
Figure 14. Sector-Specific Representative Person Air Pathway Doses (in mrem) for 2013.....	15

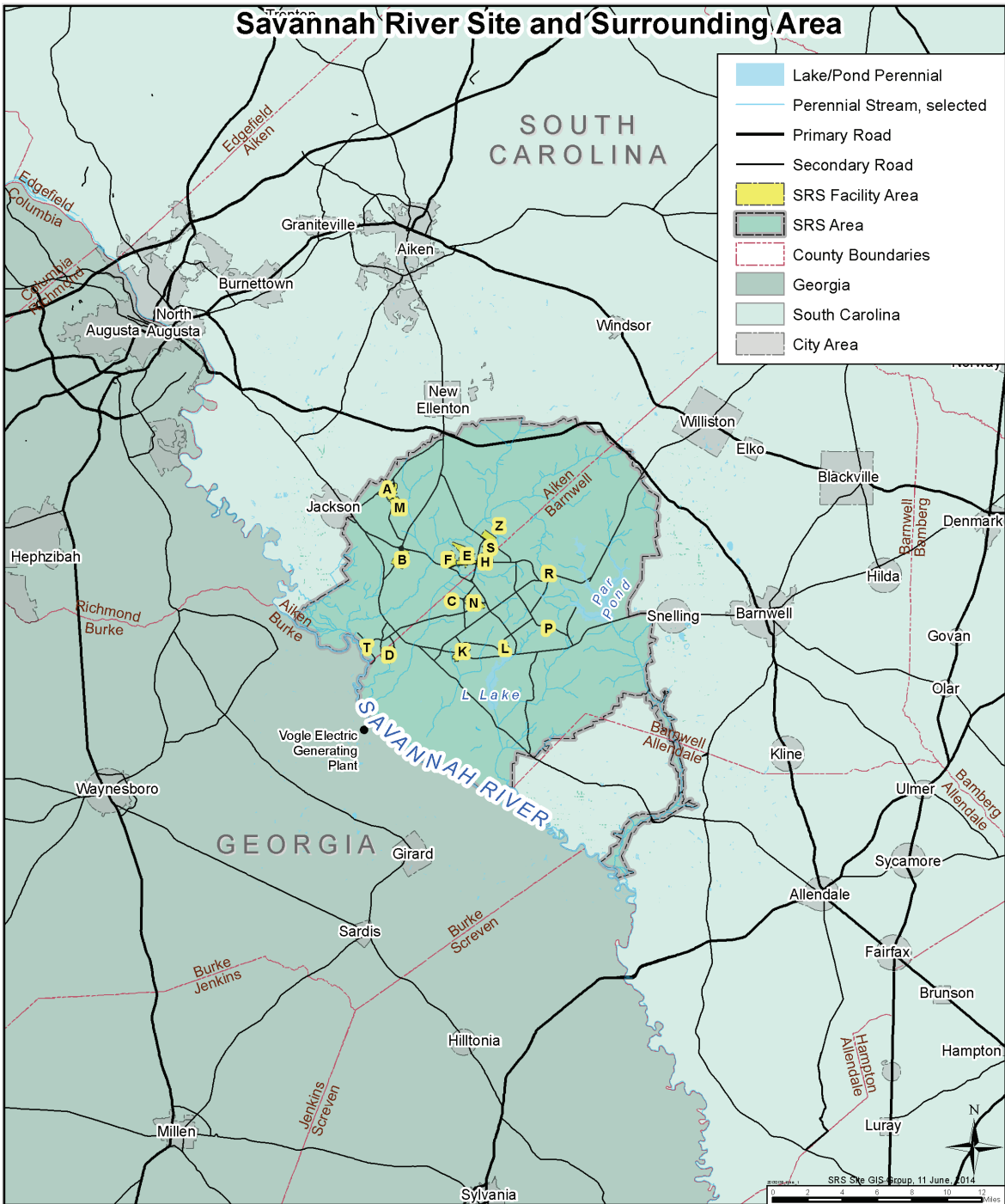
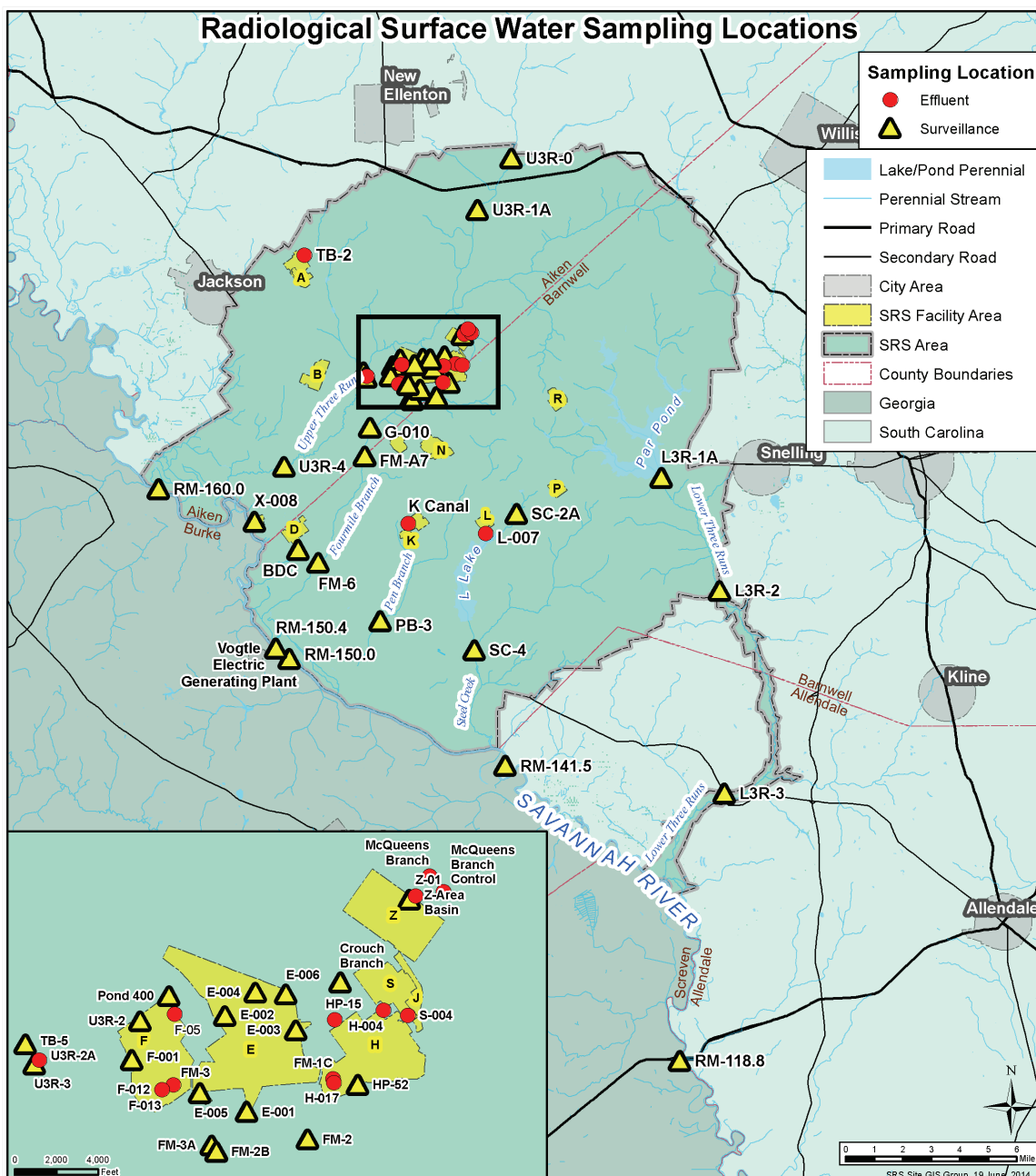
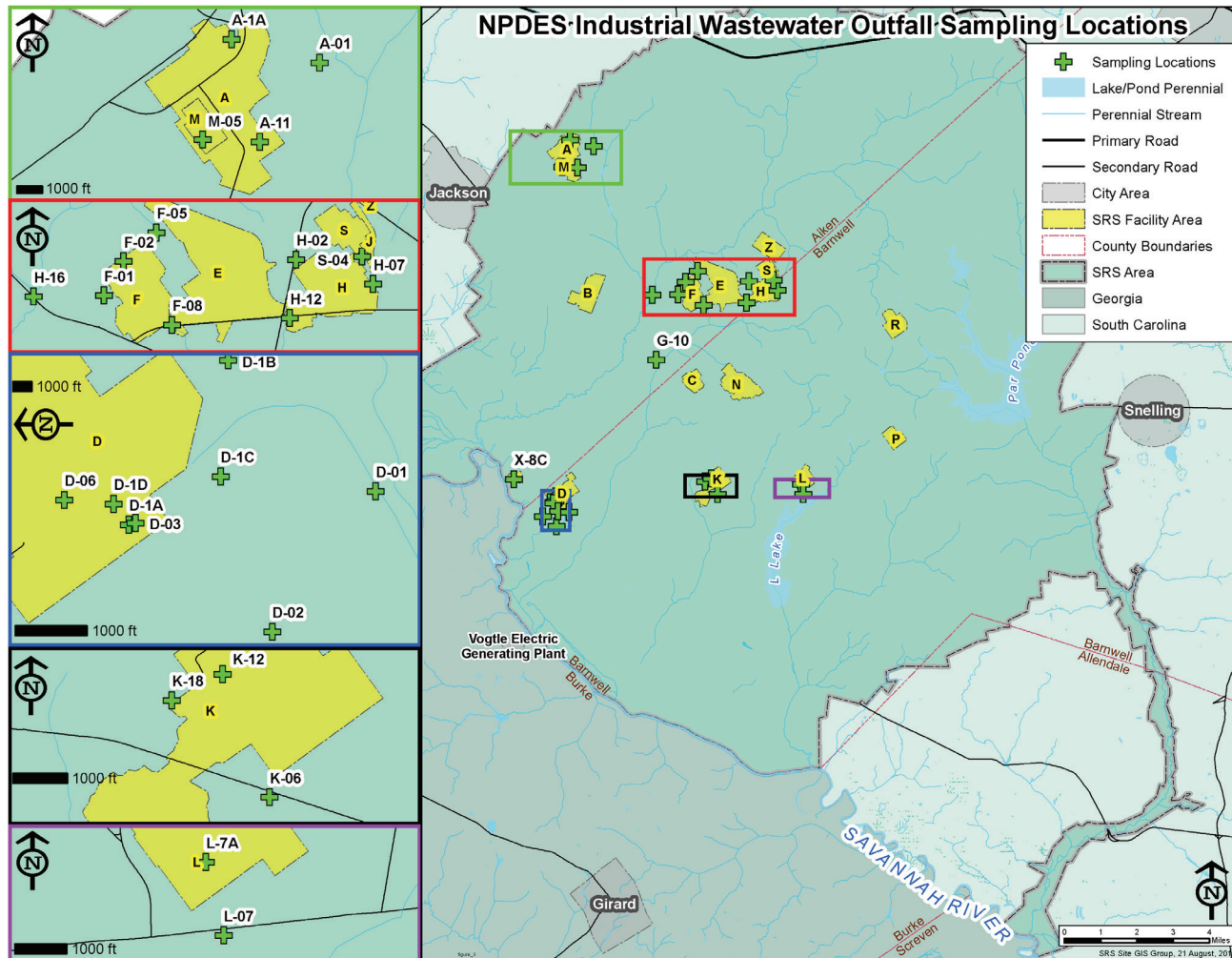


Figure 1 The Savannah River Site and Surrounding Area

SRS is located in South Carolina, about 12 miles south of Aiken, SC, and about 15 miles southeast of Augusta, GA. The Savannah River flows along the Site's southwestern border.



Surveillance and effluent sampling points are near SRS facilities, onsite streams, and on the Savannah River.



Twenty-eight industrial wastewater outfalls were regulated at SRS in 2013 under NPDES Permits SC0000175, SC0047431, and SC0049107.

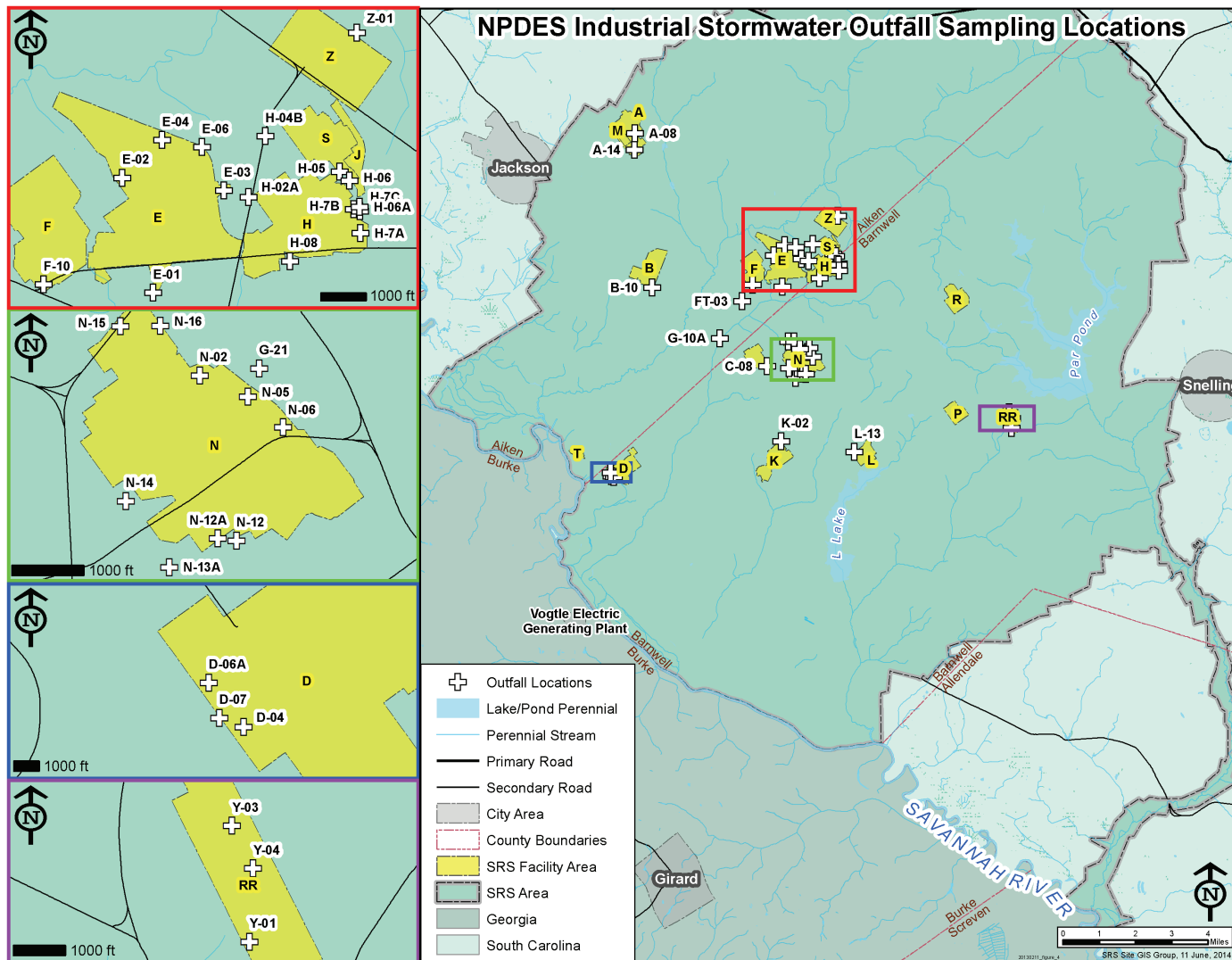


Figure 4 NPDES Industrial Stormwater Outfall Sampling Locations

Forty industrial stormwater outfalls were regulated at SRS in 2013 under Permit SCR000000, the NPDES General Permit for Stormwater Discharges associated with Industrial Activity (except construction activity).

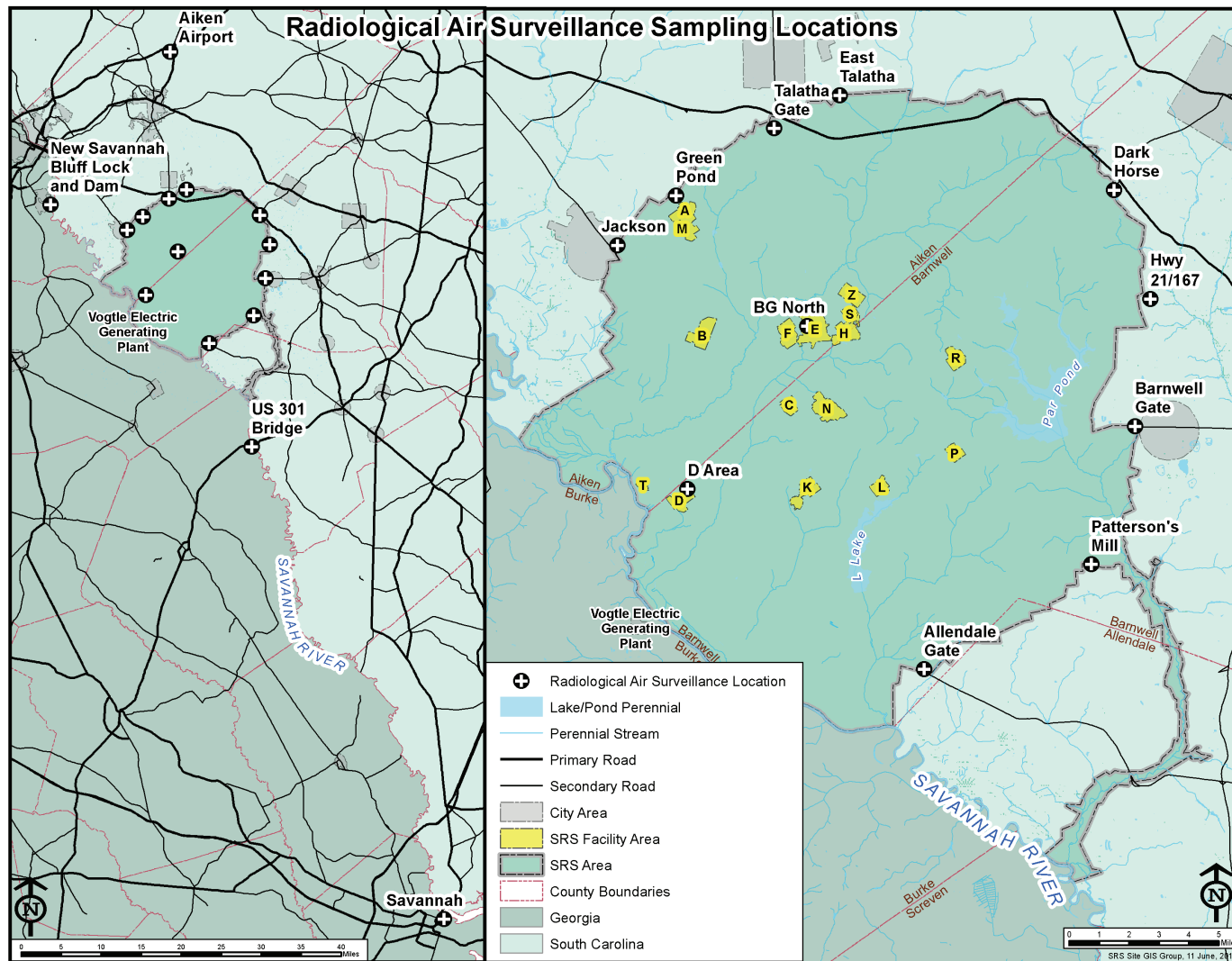


Figure 5 Radiological Air Surveillance Sampling Locations

The SRS air surveillance program consists of 11 stations located onsite or along the Site perimeter, as well as three stations approximately 25 miles from the Site perimeter (located near the U.S. Hwy 301 Bridge over the Savannah River, near the New Savannah Bluff Lock and Dam, also known as the Augusta Lock and Dam; and at the Aiken airport) and one about 100 miles from the Site perimeter (near Savannah, GA).

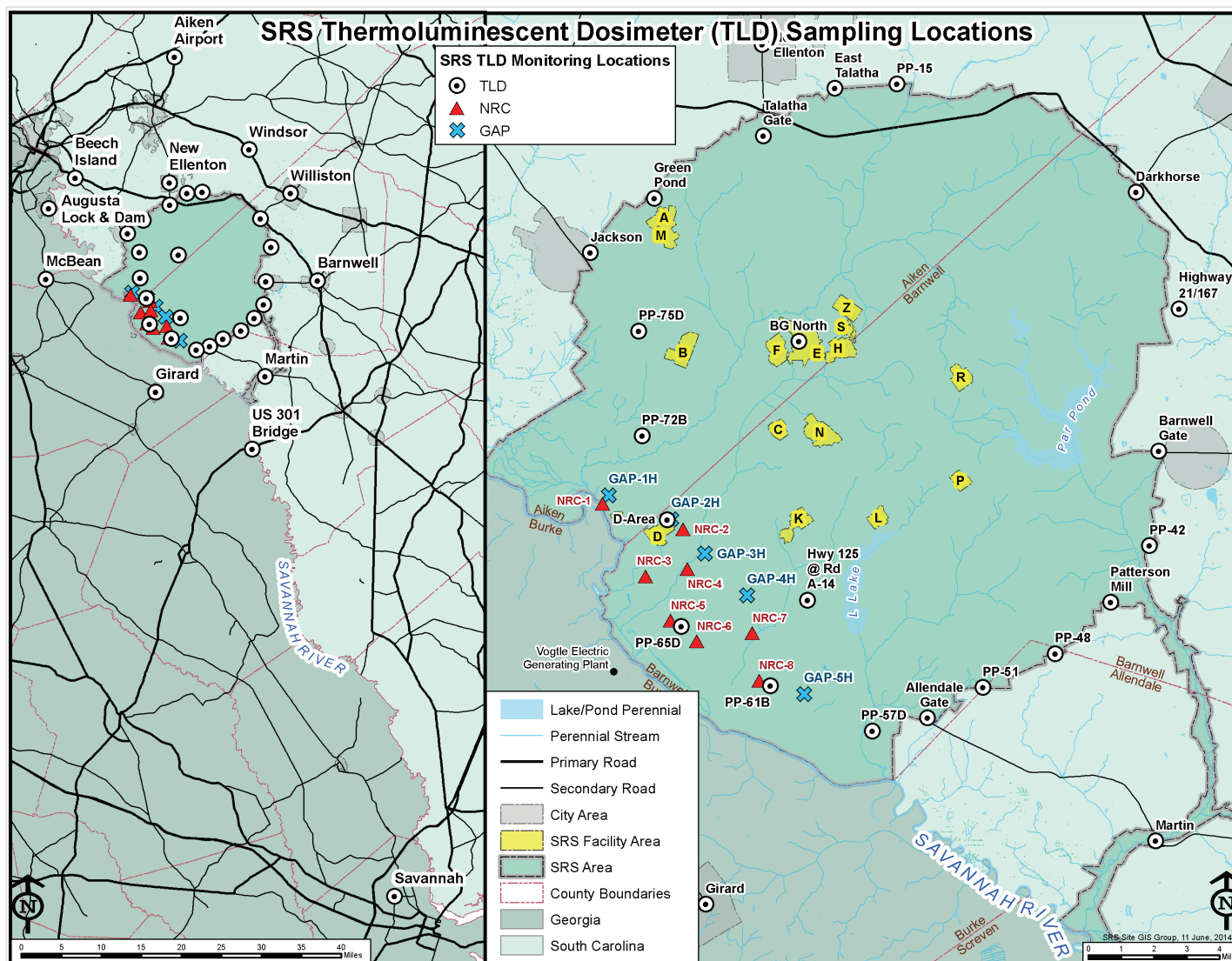


Figure 6 SRS Thermoluminescent Dosimeter (TLD) Sampling Locations

Ambient gamma radiation exposure is measured at SRS at the following locations: Plant Vogtle vicinity, population centers, air surveillance stations, and Site perimeter stations.

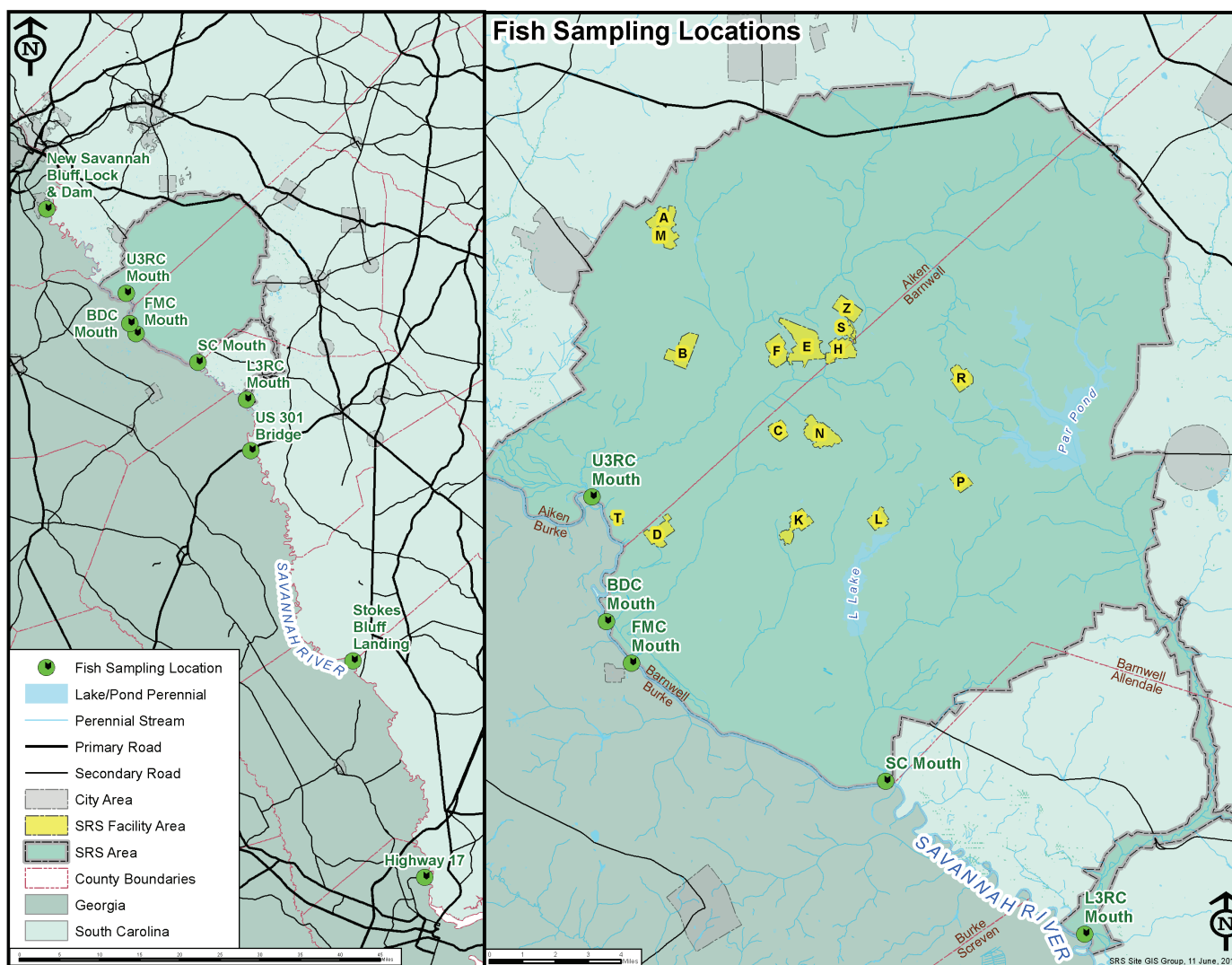


Figure 7 Fish Sampling Locations

SRS collects fish (for both radiological and nonradiological analyses) from the Savannah River above, adjacent to, and below the Site, as well as at Stokes Bluff Landing and near Savannah, GA. (Note: Samples are also collected from locations at West Bank Landing and the Edisto River that are not shown on the map.)

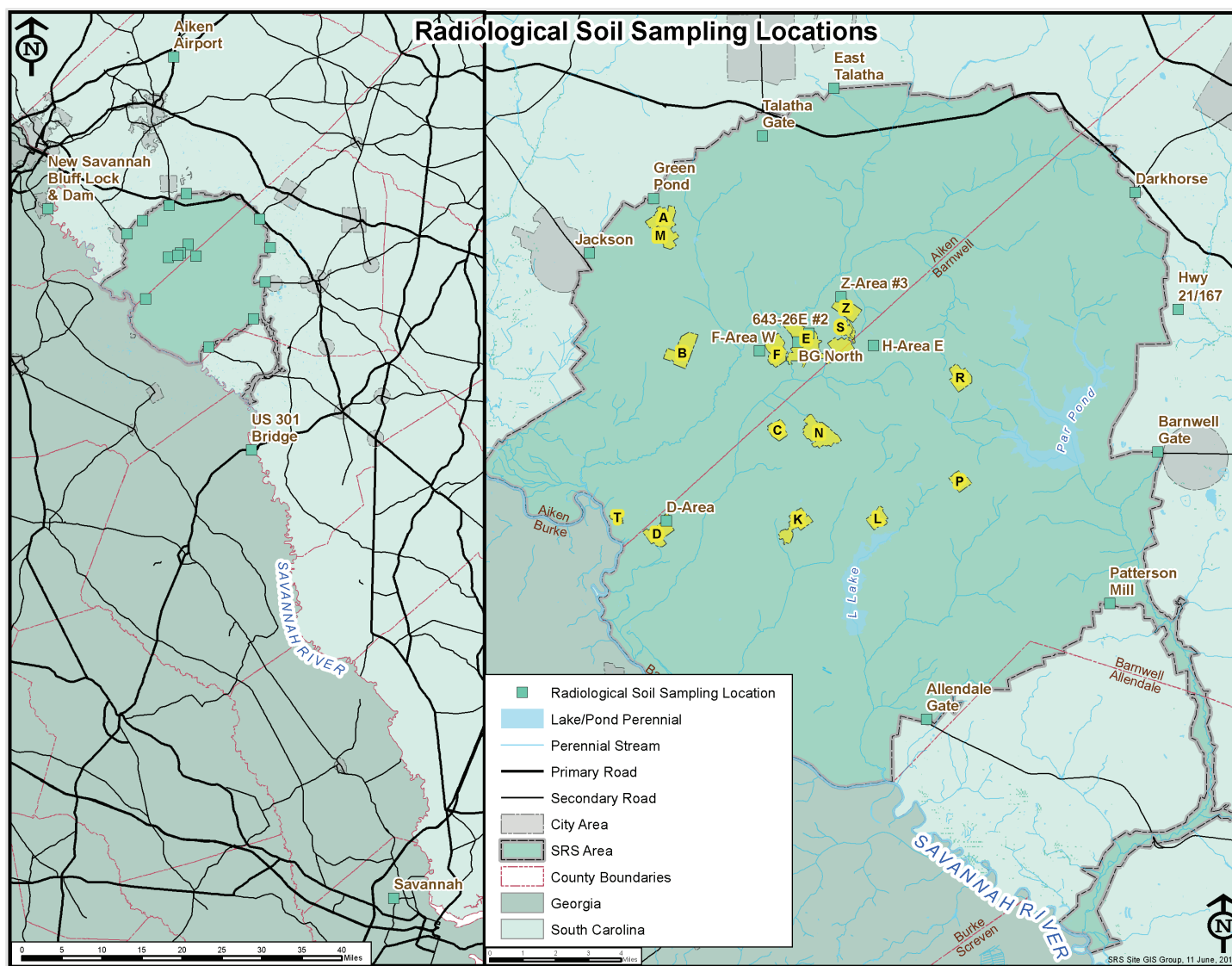


Figure 8 Radiological Soil Sampling Locations

SRS collected soil samples in 2013 from five onsite locations, 12 Site perimeter locations, and four offsite locations.

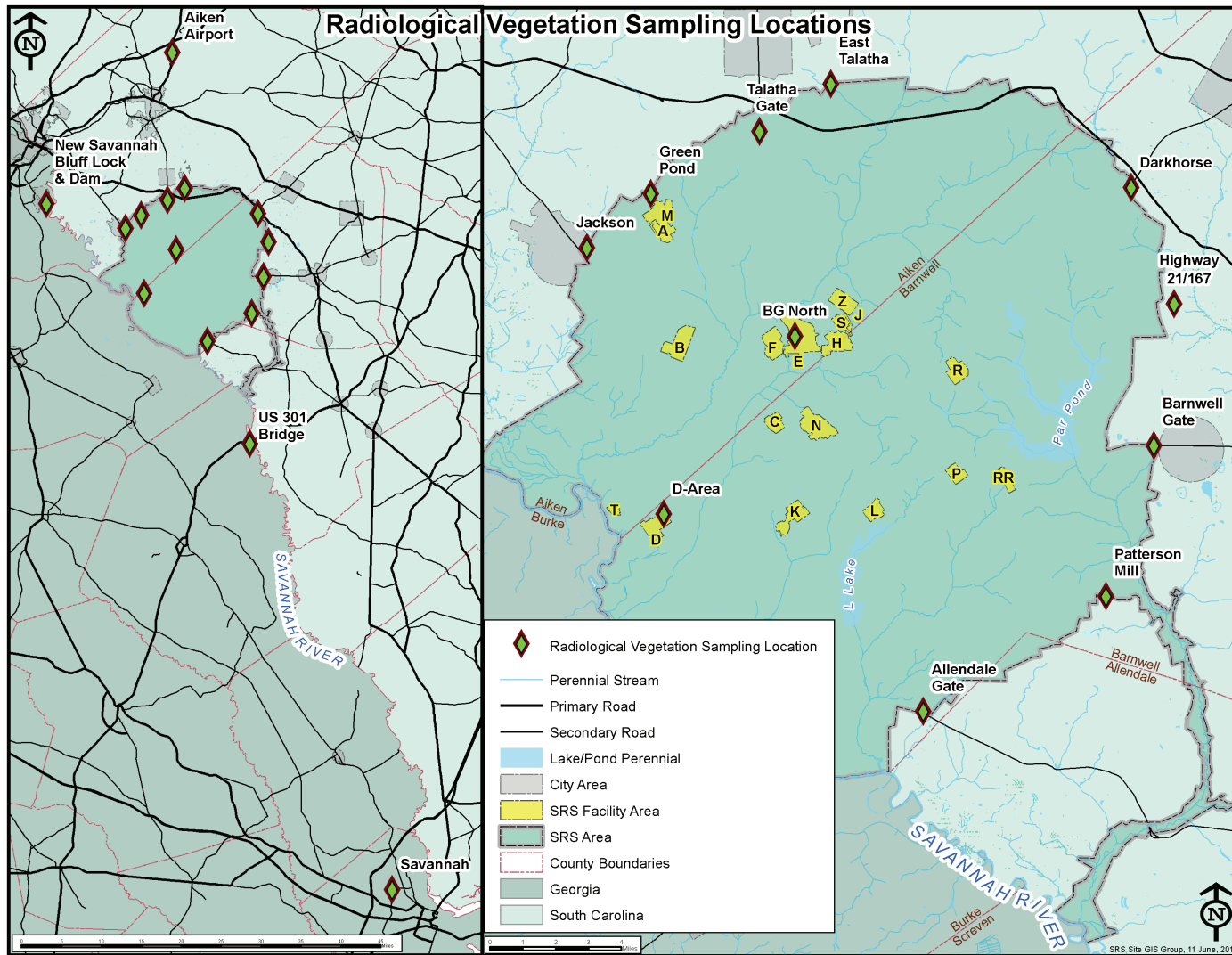


Figure 10 Radiological Vegetation Sampling Locations

Vegetation samples were collected for radiological analysis in 2013 from 11 locations onsite or along the Site perimeter, and from four offsite locations.

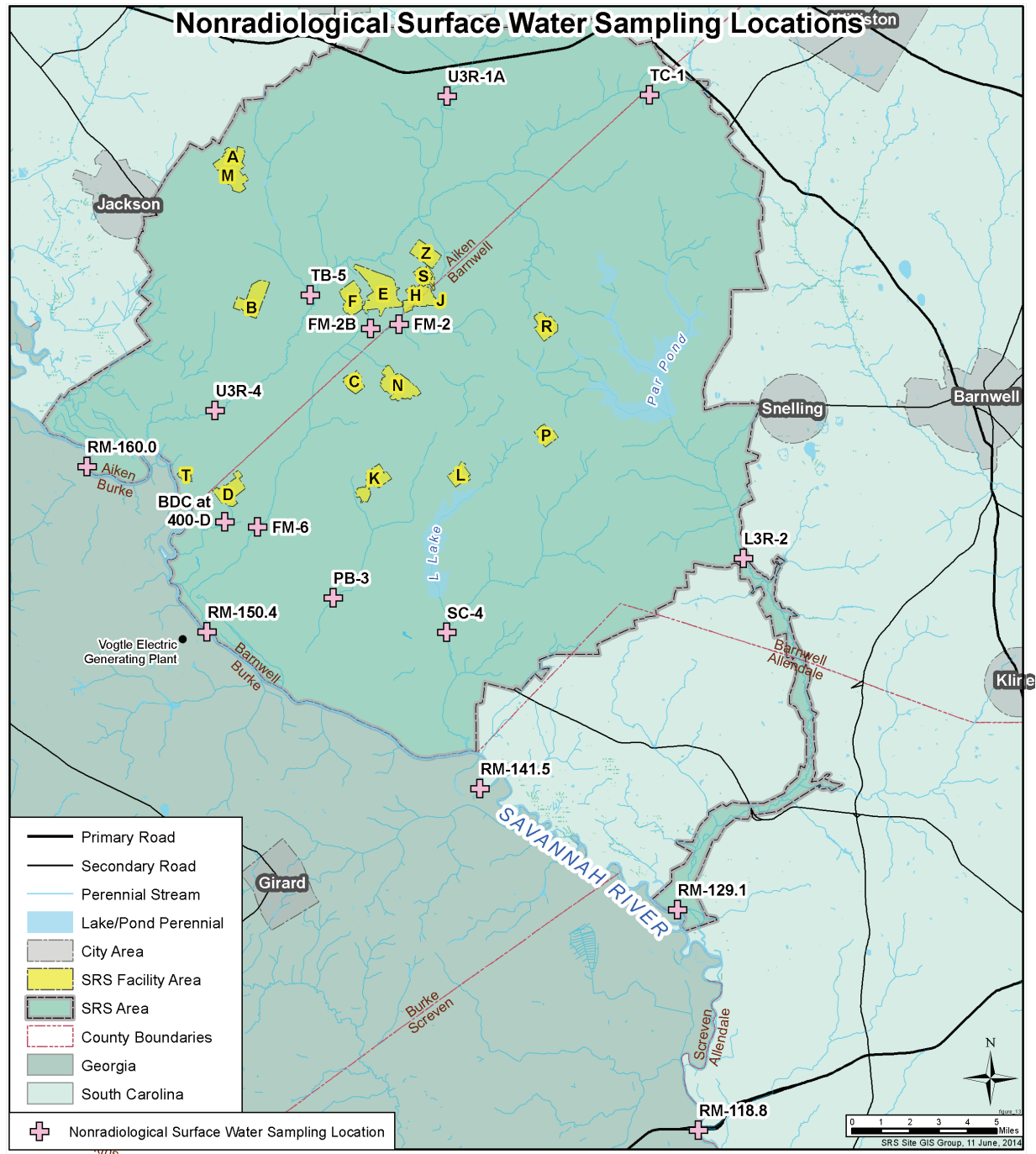


Figure 11 Nonradiological Surface Water Sampling Locations

Surface water samples are collected from five Savannah River and 11 SRS stream locations and are analyzed for various chemical and physical properties.

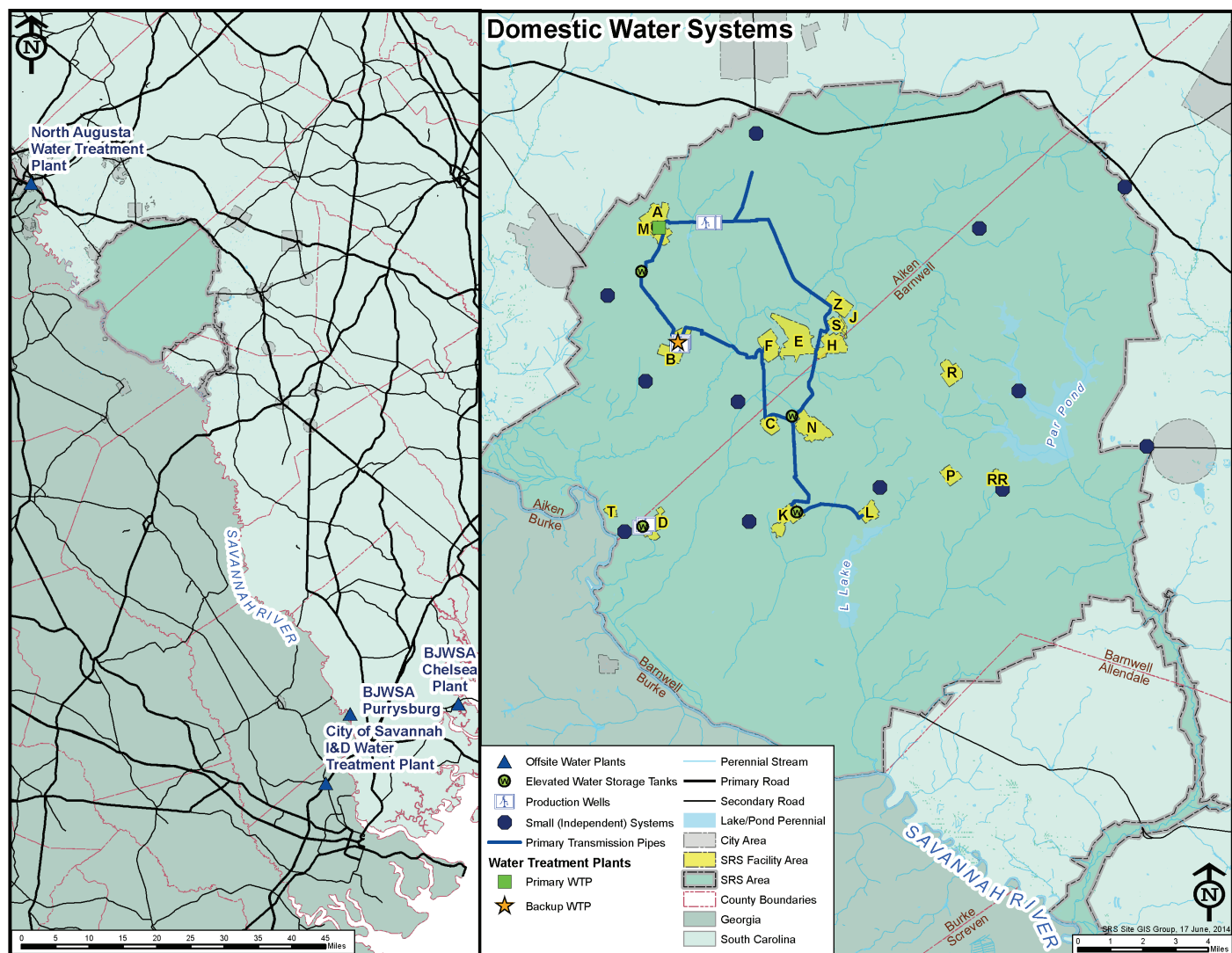


Figure 12 Domestic Water Systems

Most of the drinking water at SRS is supplied by one "large" system, which requires regulatory oversight and is sampled on a regular basis. The Site also has 12 "small" domestic water facilities, which serve populations of fewer than 25 persons. Only four of the smaller systems require regulatory oversight and are routinely sampled.

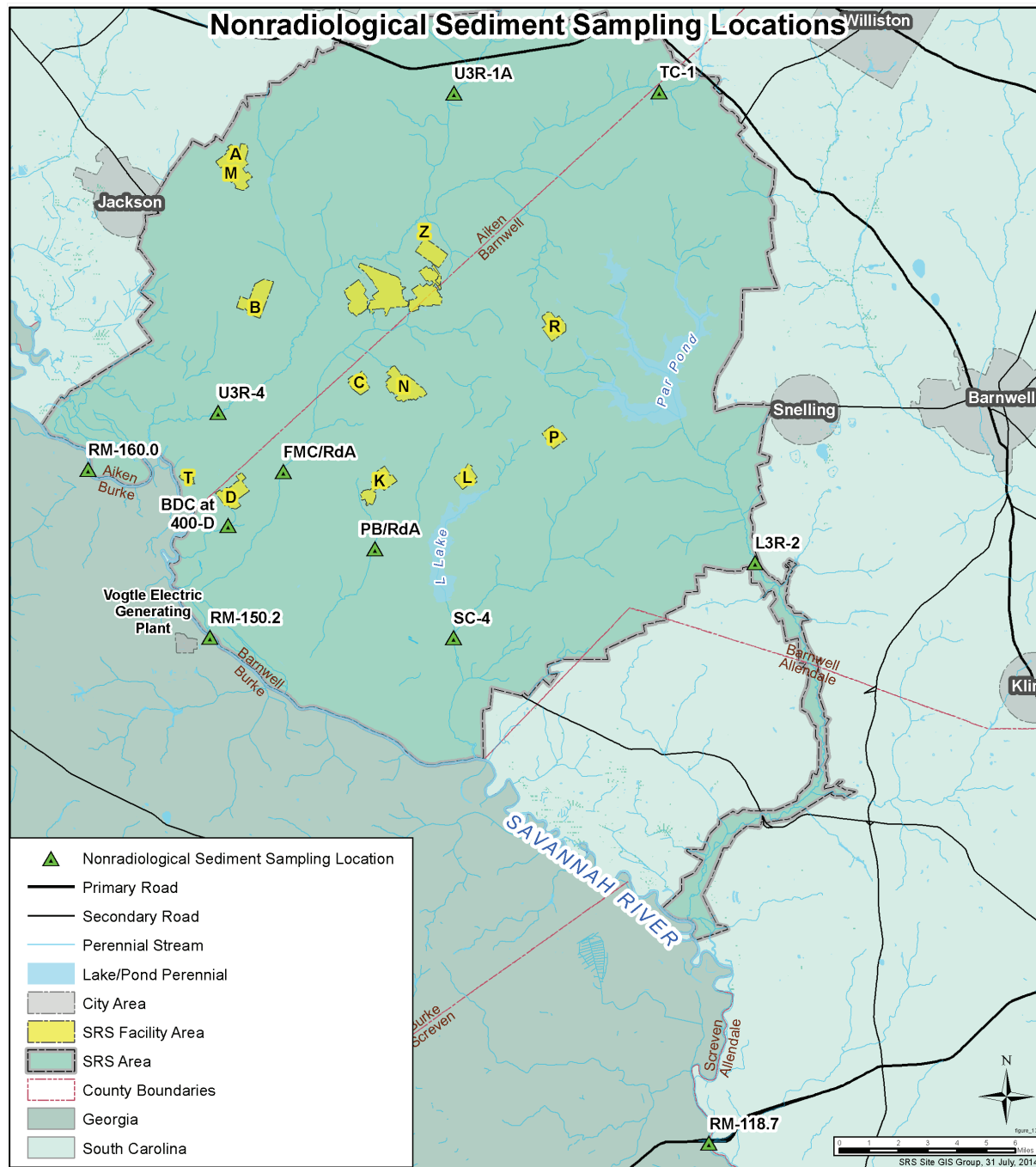


Figure 13 Nonradiological Sediment Sampling Locations

Sediment samples are collected at eight onsite stream locations and three Savannah River locations. The samples are analyzed for various inorganic contaminants (metals) and pesticides/herbicides. (Note: Locations for special samples taken with SCDHEC are not shown on the map.)

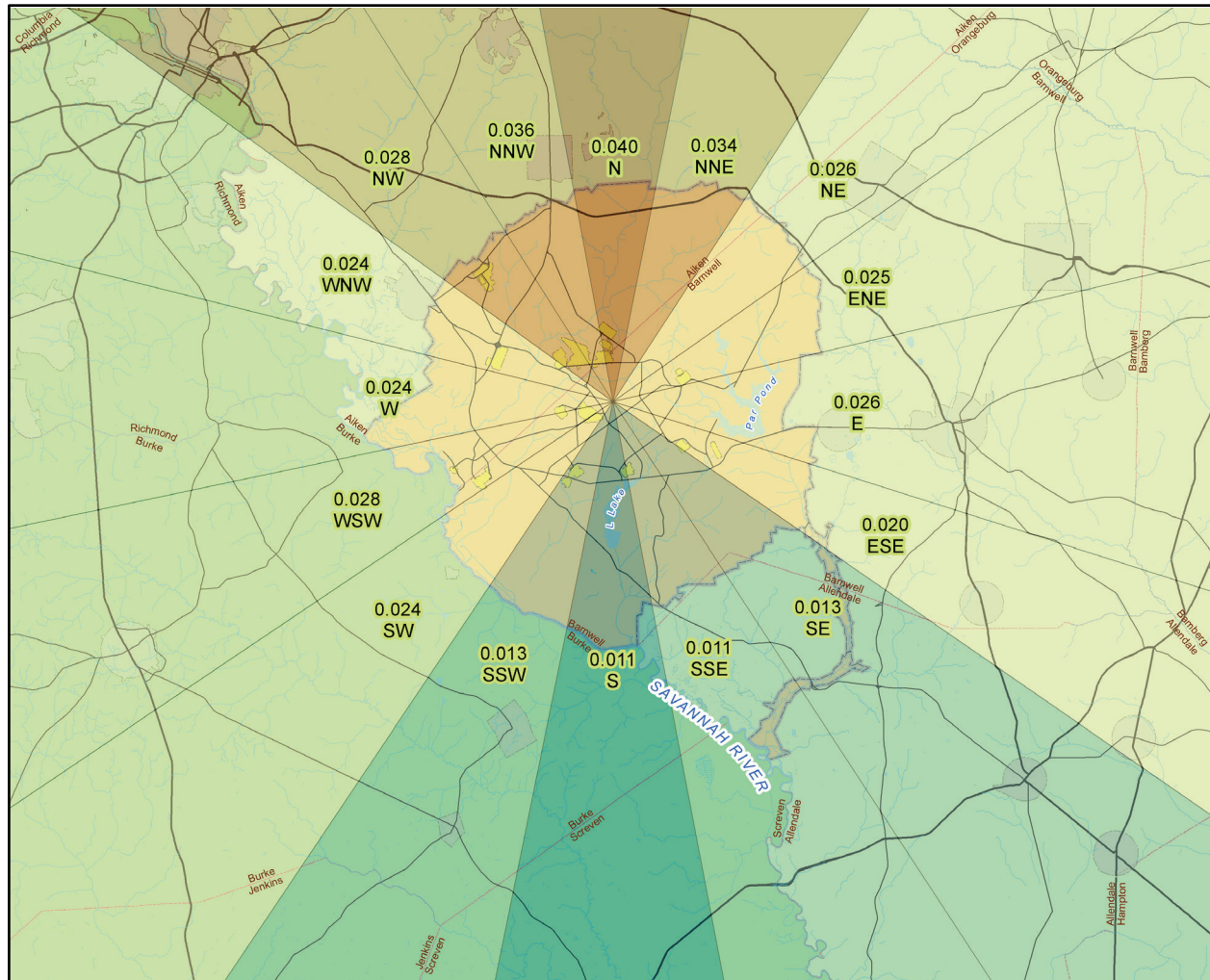


Figure 14 Sector-Specific Representative Person Air Pathway Doses (in mrem) for 2013

The representative person Site boundary doses from airborne releases are shown for each of the 16 major compass point directions surrounding SRS. In 2013, the N, NNE, ENE, E, WSW, and NNW sectors had essentially the same representative person dose. However, the N sector was slightly higher than the other sectors.