

Maps Figure		Page
Figure 1	Radiological Air Surveillance Sampling Locations.	2
Figure 2	Optically Stimulated Luminescence Dosimeter (OSLD) Sampling Locations. . .	3
Figure 3	Soil Sampling Locations.	4
Figure 4	Radiological Vegetation Sampling Locations	5
Figure 5	Stream Systems.	6
Figure 6	Radiological Sediment Sampling Locations	7
Figure 7	Domestic Water Systems	8
Figure 8	Fish Sampling Locations	9

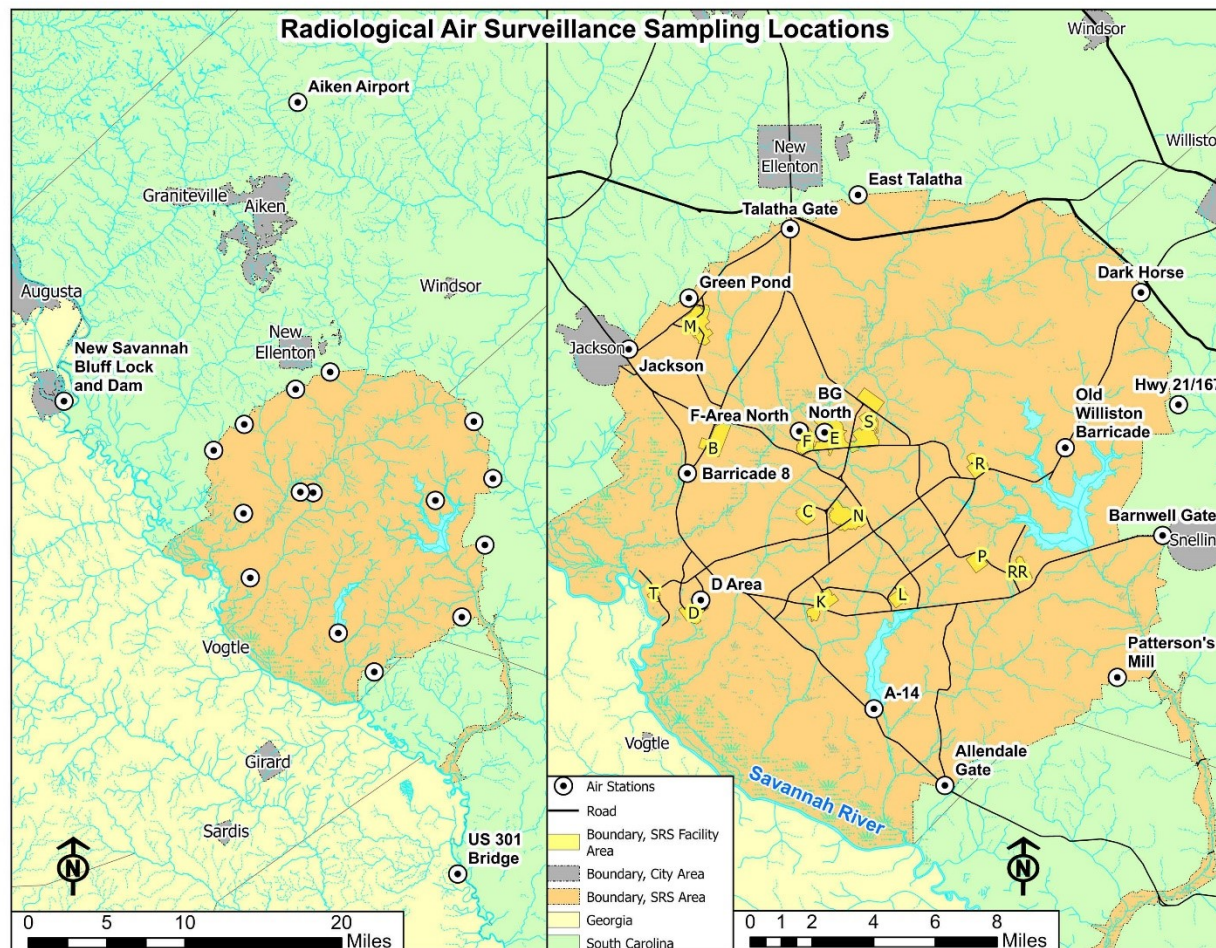


Figure 1 Radiological Air Surveillance Sampling Locations

The SRS air surveillance program consists of 18 stations located onsite or along the Site perimeter, as well as three stations approximately 25 miles from the Site perimeter (located near the U.S. Hwy 301 Bridge over the Savannah River; near the New Savannah Bluff Lock and Dam, also known as the Augusta Lock and Dam; and at the Aiken airport).



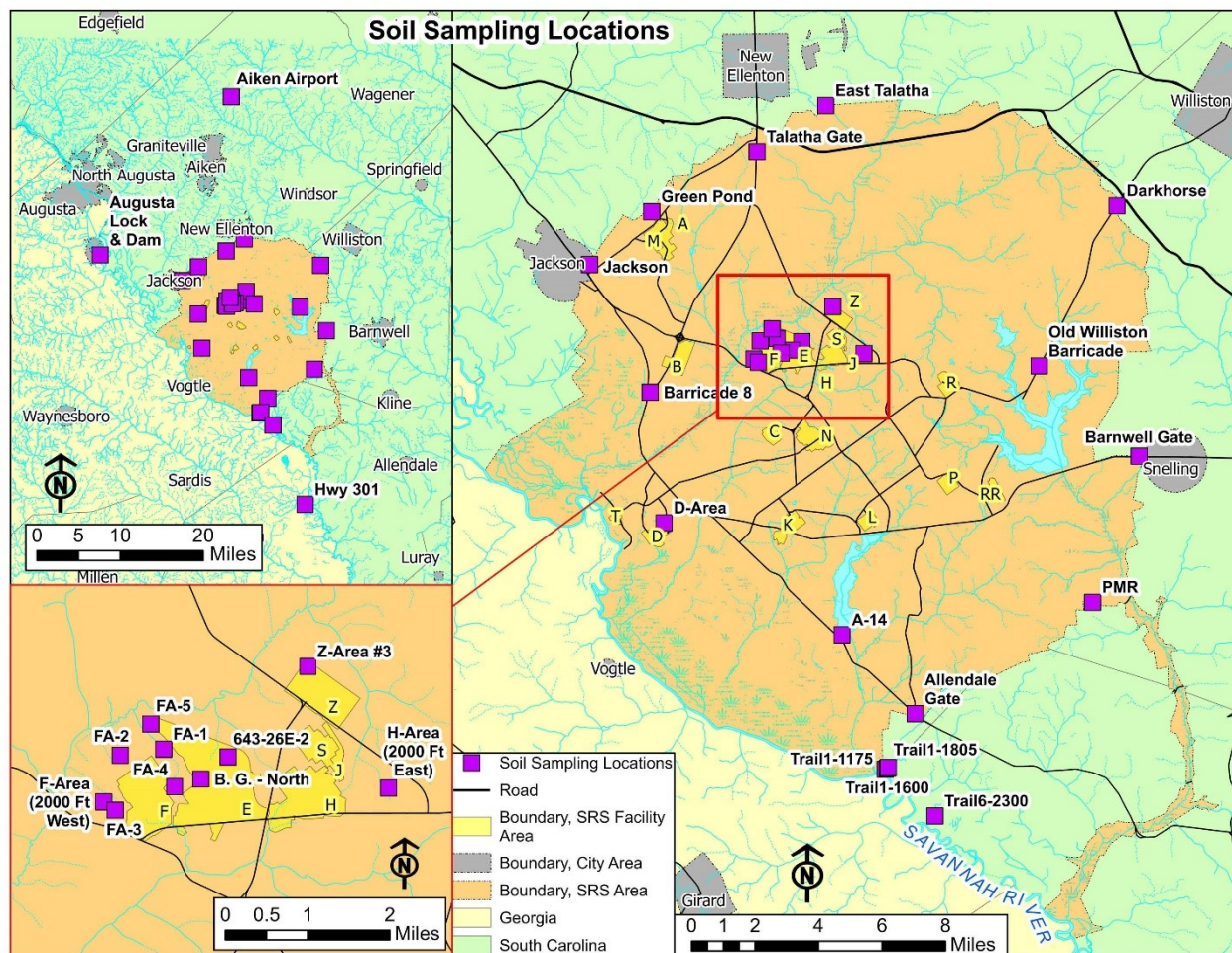


Figure 3 Soil Sampling Locations

SRS collected nonradiological samples from 5 onsite locations. SRS collected radiological soil samples in 2024 from 10 onsite locations, 12 Site perimeter locations, 7 offsite locations.

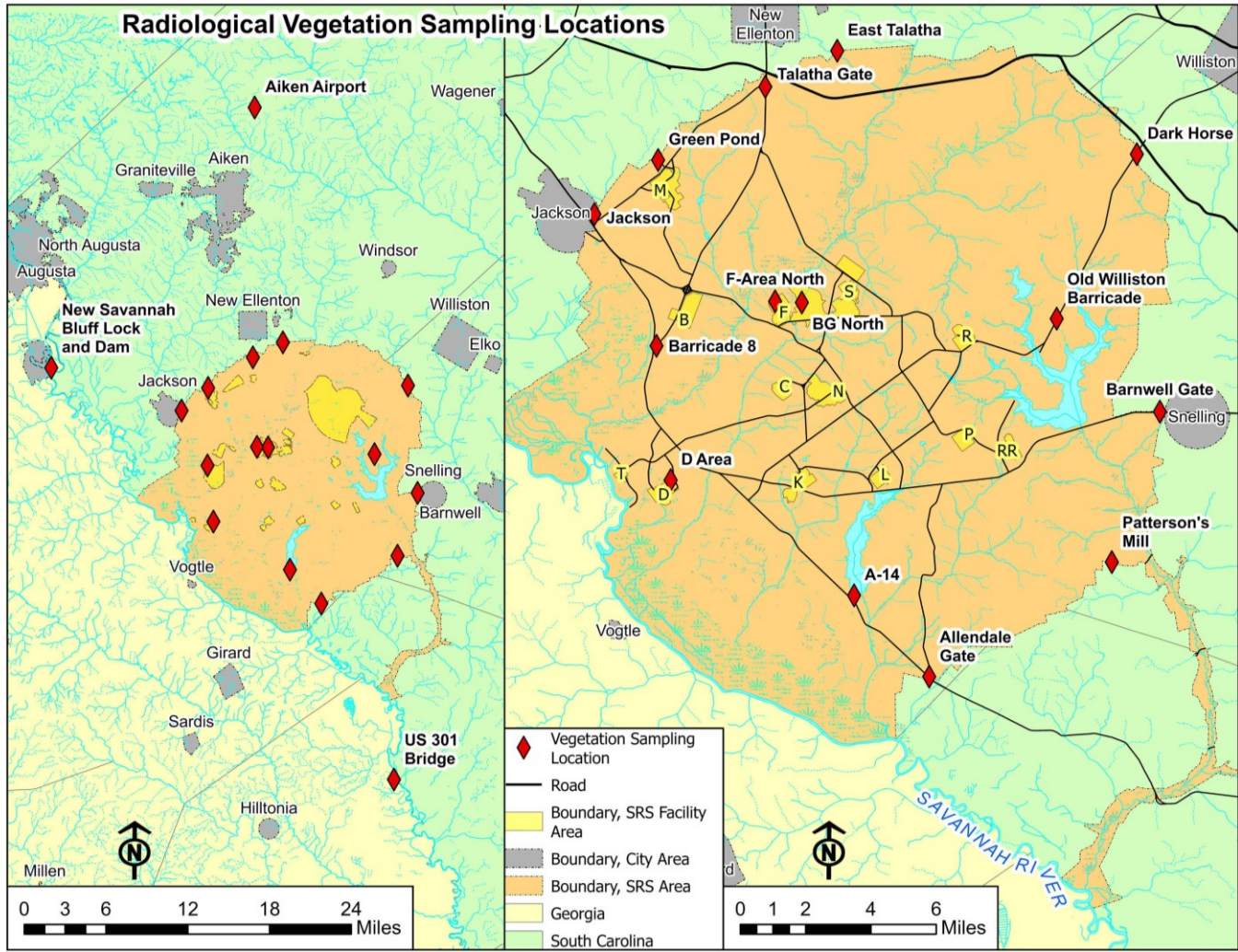


Figure 4 Radiological Vegetation Sampling Locations

Vegetation samples were collected for radiological analysis in 2024 from 2 onsite locations, 12 site perimeter locations, and 3 offsite locations.



Figure 5 Stream Systems

Liquid effluent, sediment, and stream surveillance samples are taken in or near SRS streams. Primary streams are identified on the map.

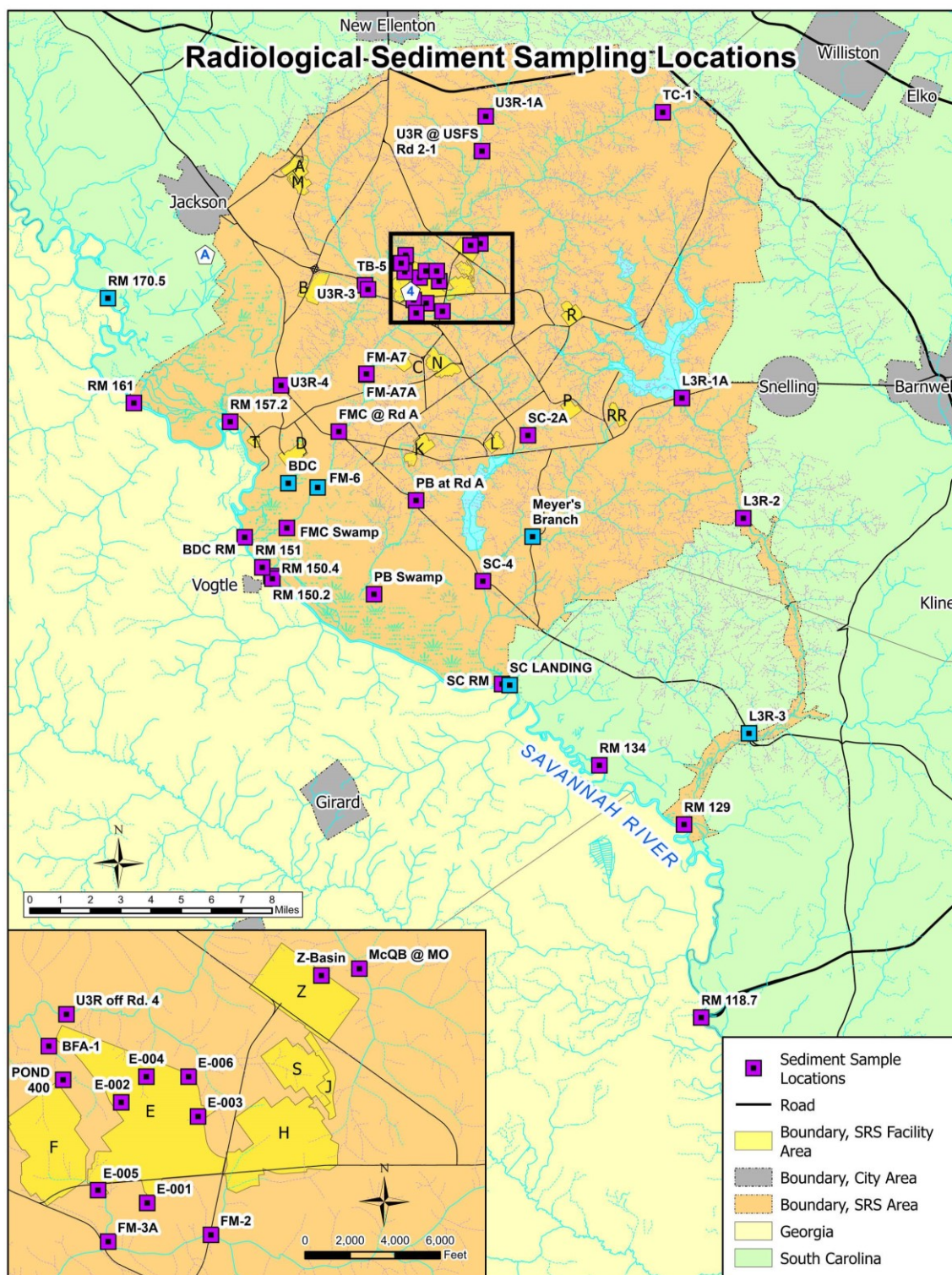


Figure 6 Radiological Sediment Sampling Locations

Sediment samples were collected at 39 locations in 2024. (Note: Locations in purple were sampled in 2024, while locations in blue were not.)

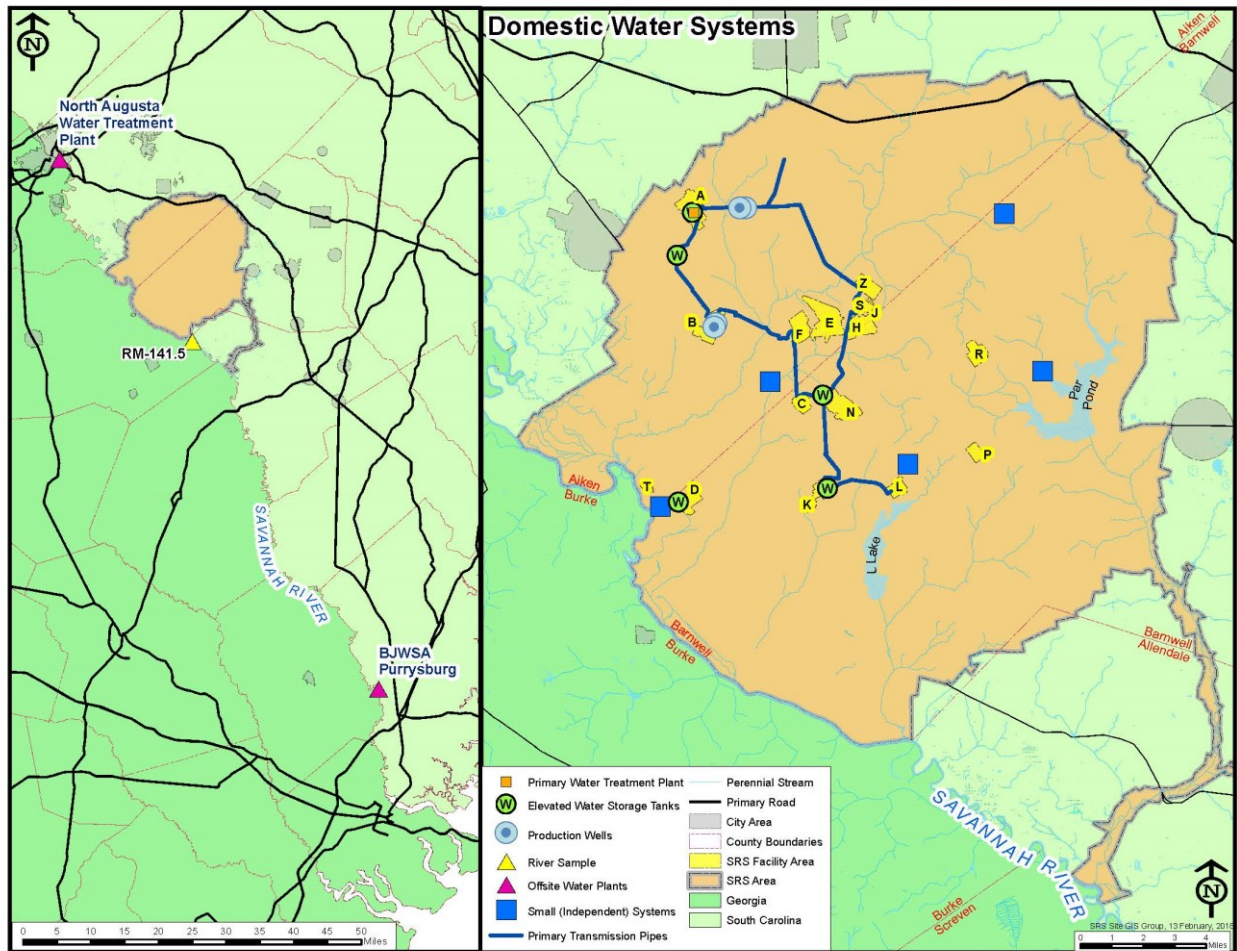


Figure 7 Domestic Water Systems

SRS collects drinking water samples from 10 locations at SRS and at two water treatment facilities that use water from the Savannah River as a source of drinking water. Data from these samples are compared to samples from the River Mile 141.5 location. Onsite drinking water sampling consists of samples from the large treatment plant in A Area and samples at four wells and five small systems.

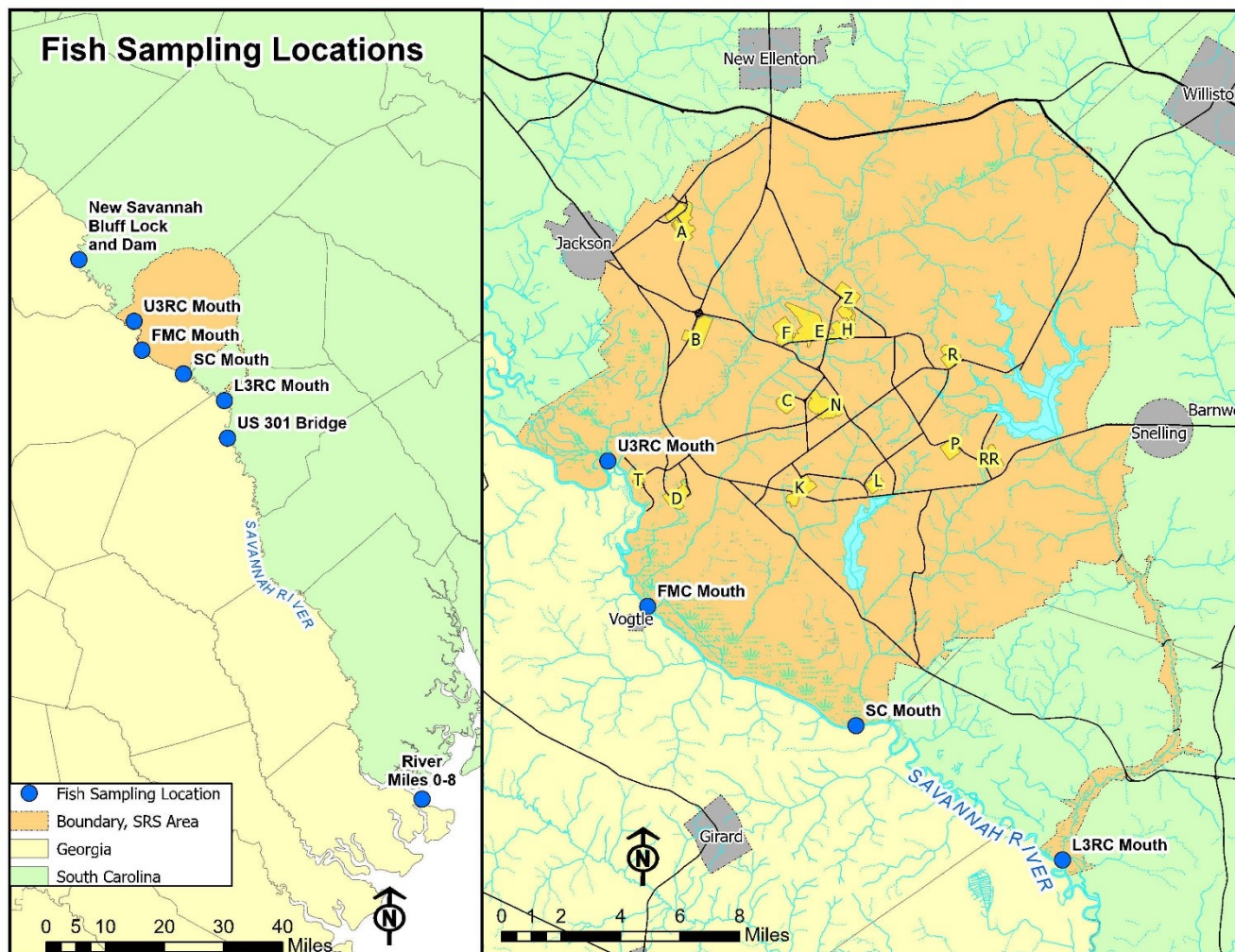


Figure 8 Fish Sampling Locations

SRS collects fish (for both radiological and nonradiological analyses) from the Savannah River above, adjacent to, and below the Site, as well as near Savannah, Georgia.